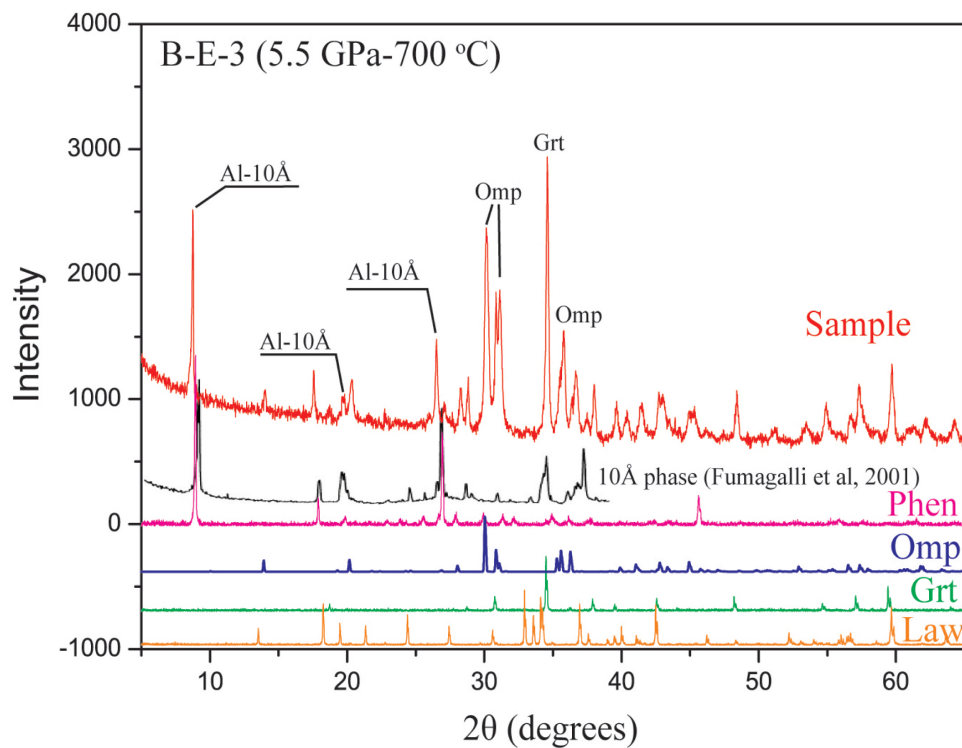


SUPPLEMENTAL FIGURE 1. Thin section photomicrographs (plane-polarized light) of the lawsonite blueschist 2S46 from North Qilian, NW China, the starting material of this study.



SUPPLEMENTAL FIGURE 2. Selected X-ray powder diffraction (XRD) pattern of the run BE-3-1 (5.5 GPa and 700 °C). The standard XRD patterns of all phase possibly present in the run products are shown for comparison. Typical diffraction peaks of the major phases are marked.