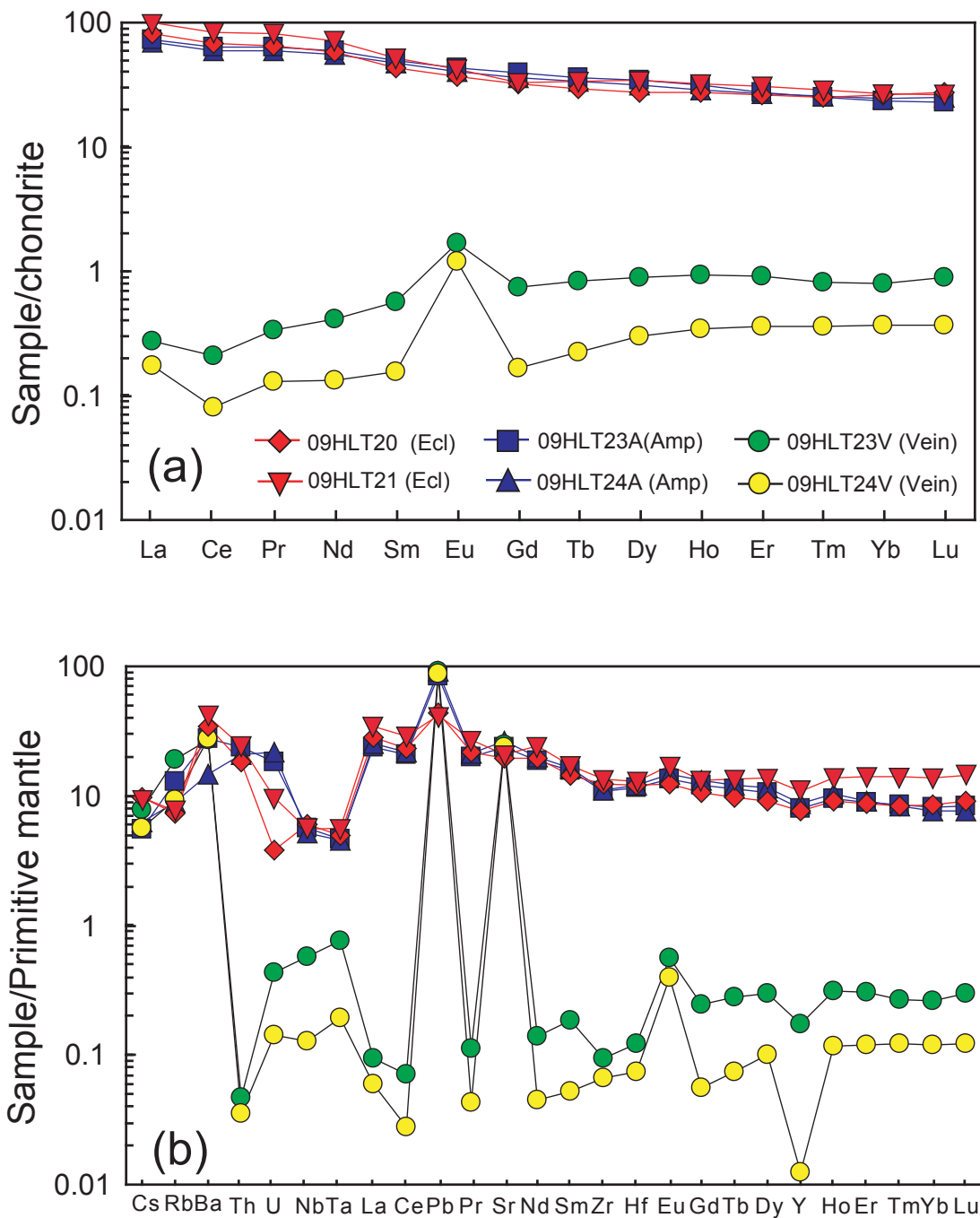
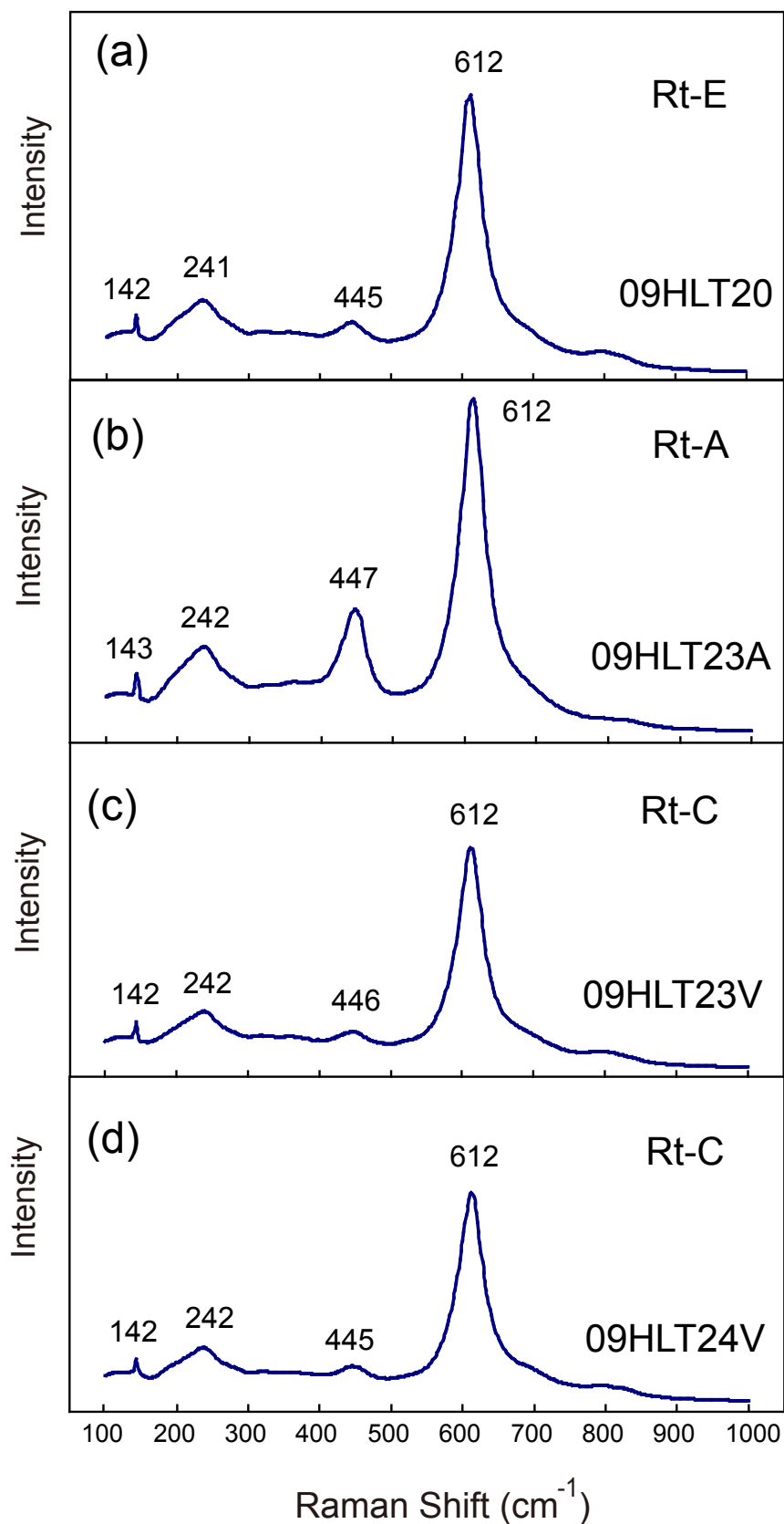


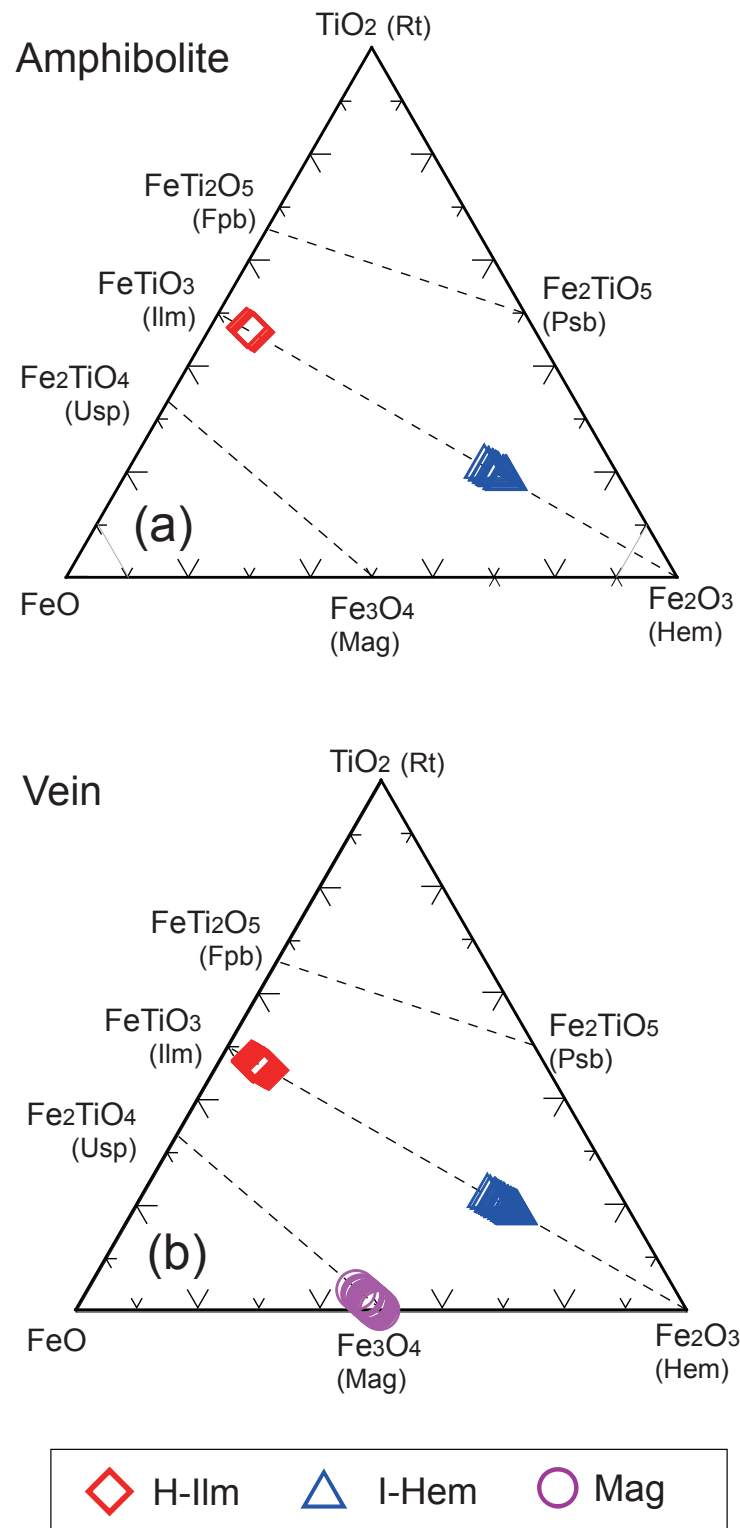
FIGURE A1. (a) Geological map showing the litho-tectonic zones of the Dabie UHP metamorphic terrane in eastern China. (b) Local geological map (modified after Guo et al. 2015) of the Hualiangting unit showing the sample locations.



APPENDIX FIGURE A2. (a) Chondrite-normalized REE patterns of the eclogites, amphibolites, and plagioclase veins. (b) Primitive mantle-normalized trace element patterns of the eclogites, amphibolites, and plagioclase veins. The normalization values are from Sun and McDonough (1989).



APPENDIX FIGURE A3. Raman spectra of the Rt-E (a), Rt-A (b), and Rt-C (c, d) in the metabasites and plagioclase veins.



APPENDIX FIGURE A4. Ternary diagram of the FeO-Fe<sub>2</sub>O<sub>3</sub>-TiO<sub>2</sub> system showing the compositions of Fe-Ti oxide minerals (mol%). Fpb = ferropseudobrookite. (a) Fe-Ti oxide minerals in the amphibolites. (b) Fe-Ti oxide minerals in the plagioclase veins.

## REFERENCES CITED

- Guo, S., Chen, Y., Ye, K., Su, B., Yang, Y.H., Zhang, L.M., Liu, J.B., and Mao, Q. (2015) Formation of multiple high-pressure veins in ultrahigh-pressure eclogite (Hualiangting, Dabie terrane, China): Fluid source, element transfer, and closed-system metamorphic veining. *Chemical Geology*, 417, 238-260.
- Sun, S.S., and McDonough, W.F. (1989) Chemical and isotopic systematics of oceanic basalts: implications for mantle composition and processes. In A.D., Saunders and M.J. Norry, Ed., *Magmatism in the Ocean Basins*, p. 313-345. Geological Society, London, Special Publication.