

## Online Materials

**Ruizhongite,  $(\text{Ag}_{2\Box})\text{Pb}_3\text{Ge}_2\text{S}_8$ , a thiogermanate mineral from the Wusihe Pb-Zn deposit, Sichuan Province, SW China**

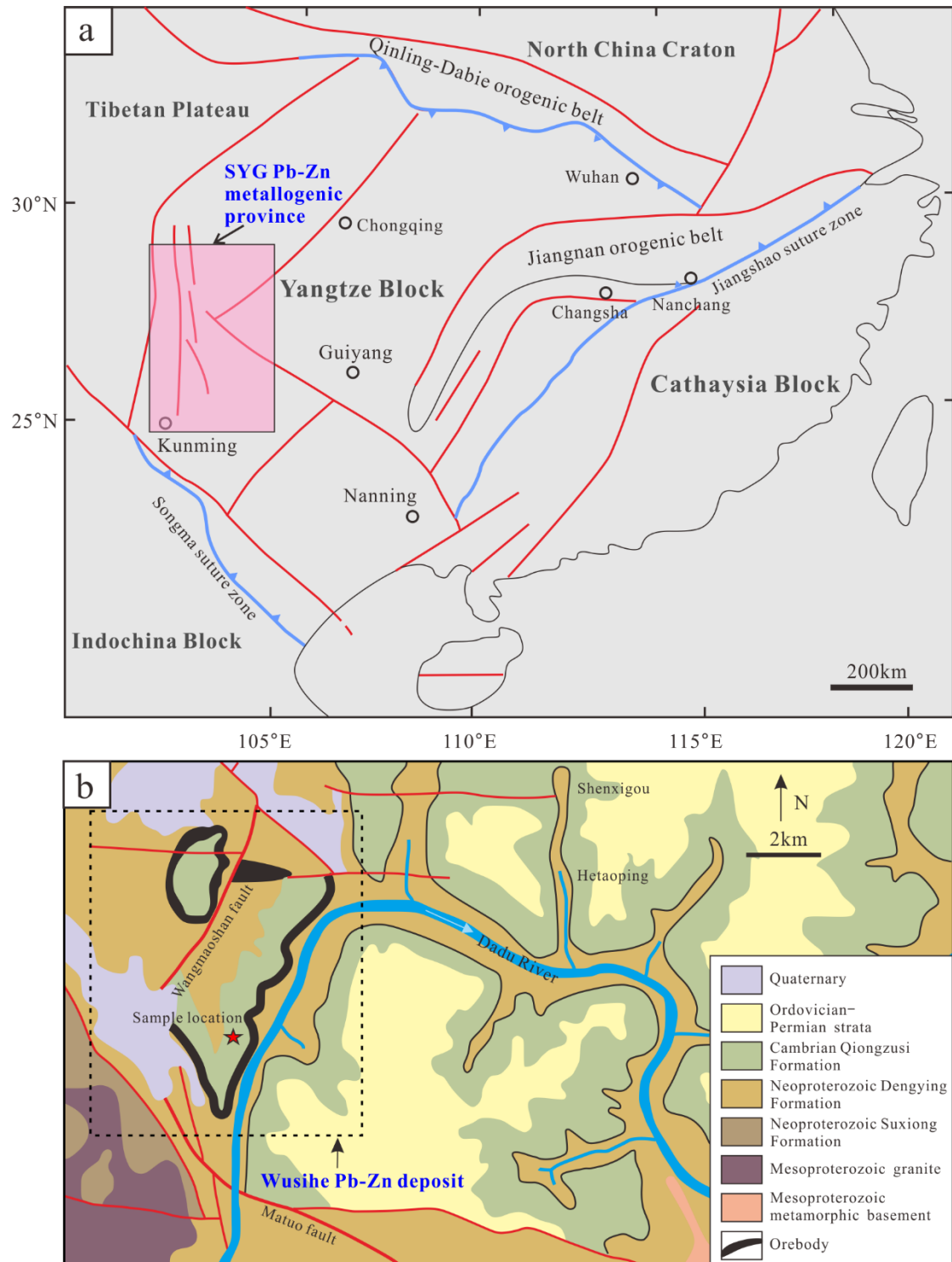
**YU-MIAO MENG<sup>1</sup>, XIANGPING GU<sup>2,\*</sup>, SONGNING MENG<sup>3</sup>, AND XIAO-WEN HUANG<sup>1</sup>**

<sup>1</sup>State Key Laboratory of Ore Deposit Geochemistry, Institute of Geochemistry, Chinese Academy of Sciences, Guiyang 550081, China

<sup>2</sup>School of Geosciences and Info-Physics, Central South University, Changsha 410083, China

<sup>3</sup>College of Earth Sciences, Chengdu University of Technology, Chengdu 610059, China

\*E-mail: [guxp2004@163.com](mailto:guxp2004@163.com) (XP Gu)



**Figure OM1.** (a) A simplified geological map of the South China Block and adjacent regions showing the location of the SYG Pb-Zn metallogenic province (modified from Hu et al. 2017). (b) Simplified regional geological map of the Wusihe Ge-rich Pb-Zn deposit (modified from Xiong et al. 2018).