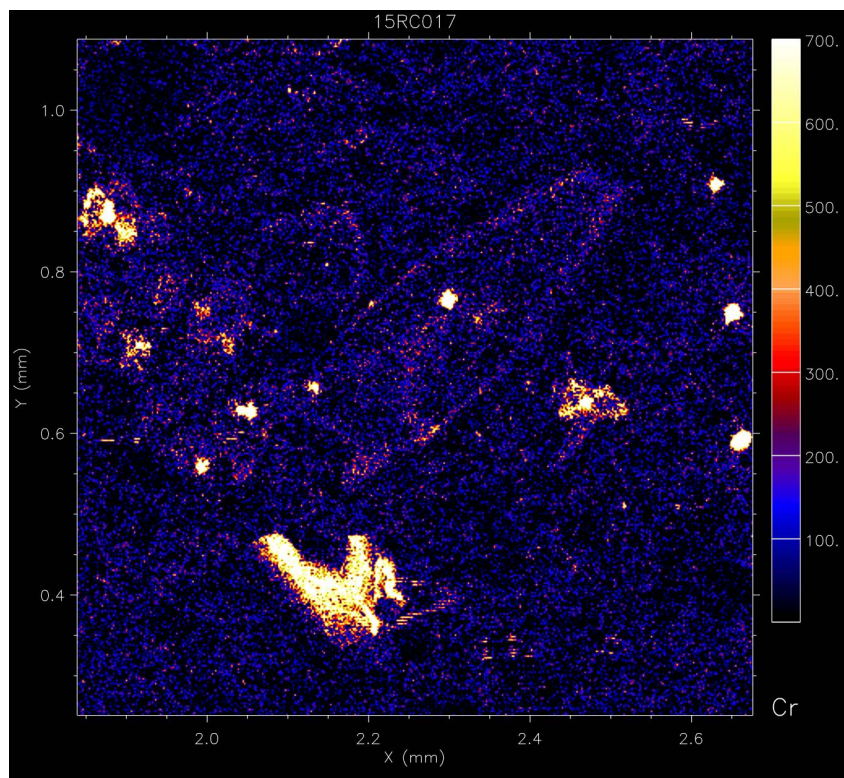
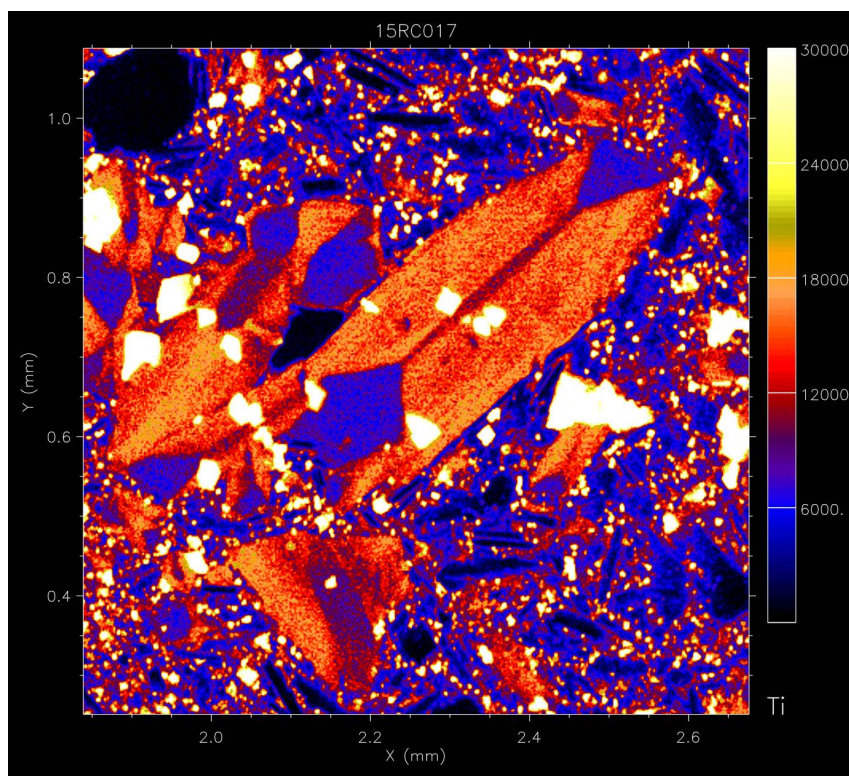


SUPPLEMENTAL FIGURE S1. Maia-XFM map of Etna sample 15RC017, low incident energy, Cr (red) – Ti (green) – Ca (blue) RGB image at full resolution (corresponding to Fig 1A).



SUPPLEMENTAL FIGURE S2. Maia-XFM map of Etna sample 15RC017, low incident energy, Cr concentration map, square root scale, full resolution (corresponding to detailed area in Fig 1, D,E,F).



SUPPLEMENTAL FIGURE S3. Maia-XFM map of Etna sample 15RC017, low incident energy, Ti concentration map, log scale, full resolution (corresponding to detailed area in Fig 1, D,E,F).