

Supplementary file (photographs of sample hand-specimens)

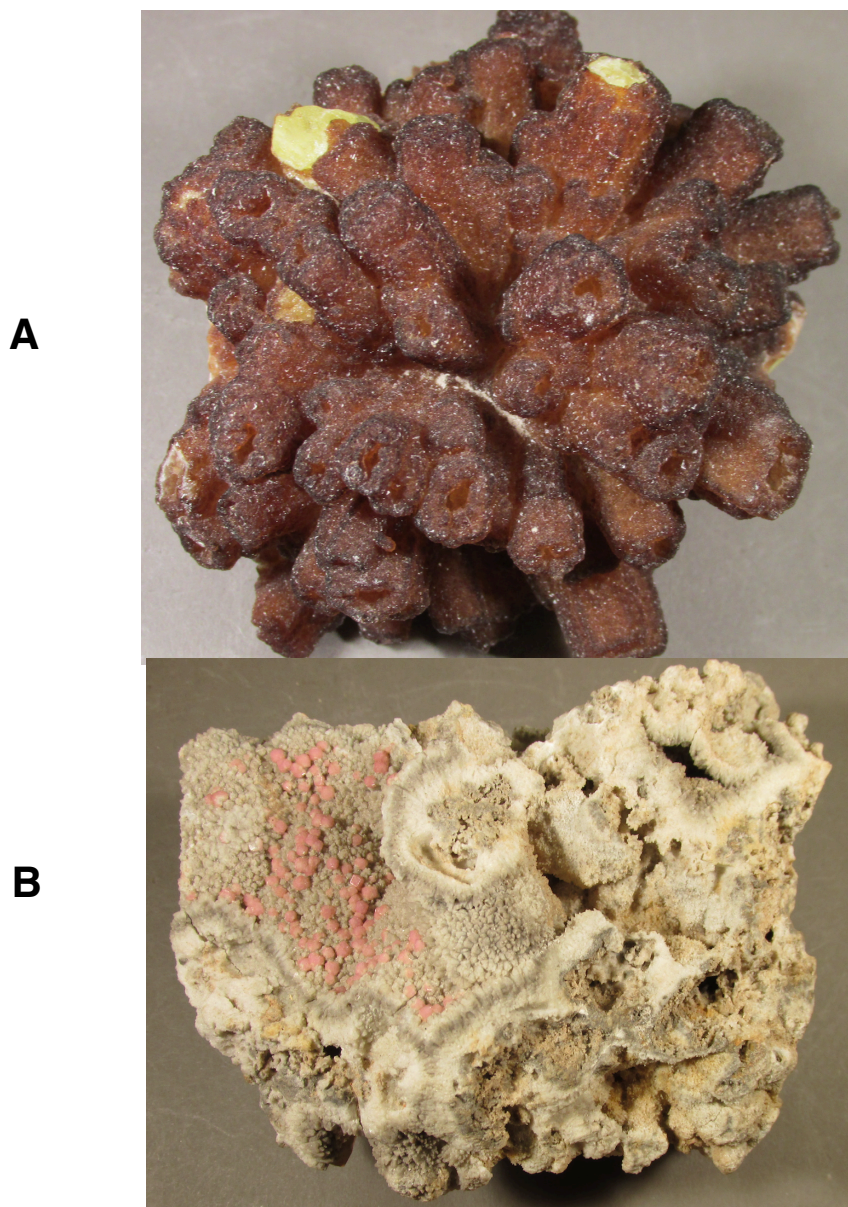


Figure S1. Photographs of hand-specimens from which the melanophlogites were separated (**A** = sample 4367; **B** = sample 4361, similar to sample 81120, the latter for which a hand-specimen photograph is not available). In both samples, melanophlogite is intergrown with or coating sulfur in drusy textures (see descriptions in references cited in this article). For each sample, melanophlogite was hand-picked for purity and reacted with HCl for removal of any carbonate present. Pink grains in **B** are aragonite. For both photographs, the horizontal scale is approximately 8 cm. Photographs are courtesy of J. Newman, American Museum of Natural History, New York, NY).