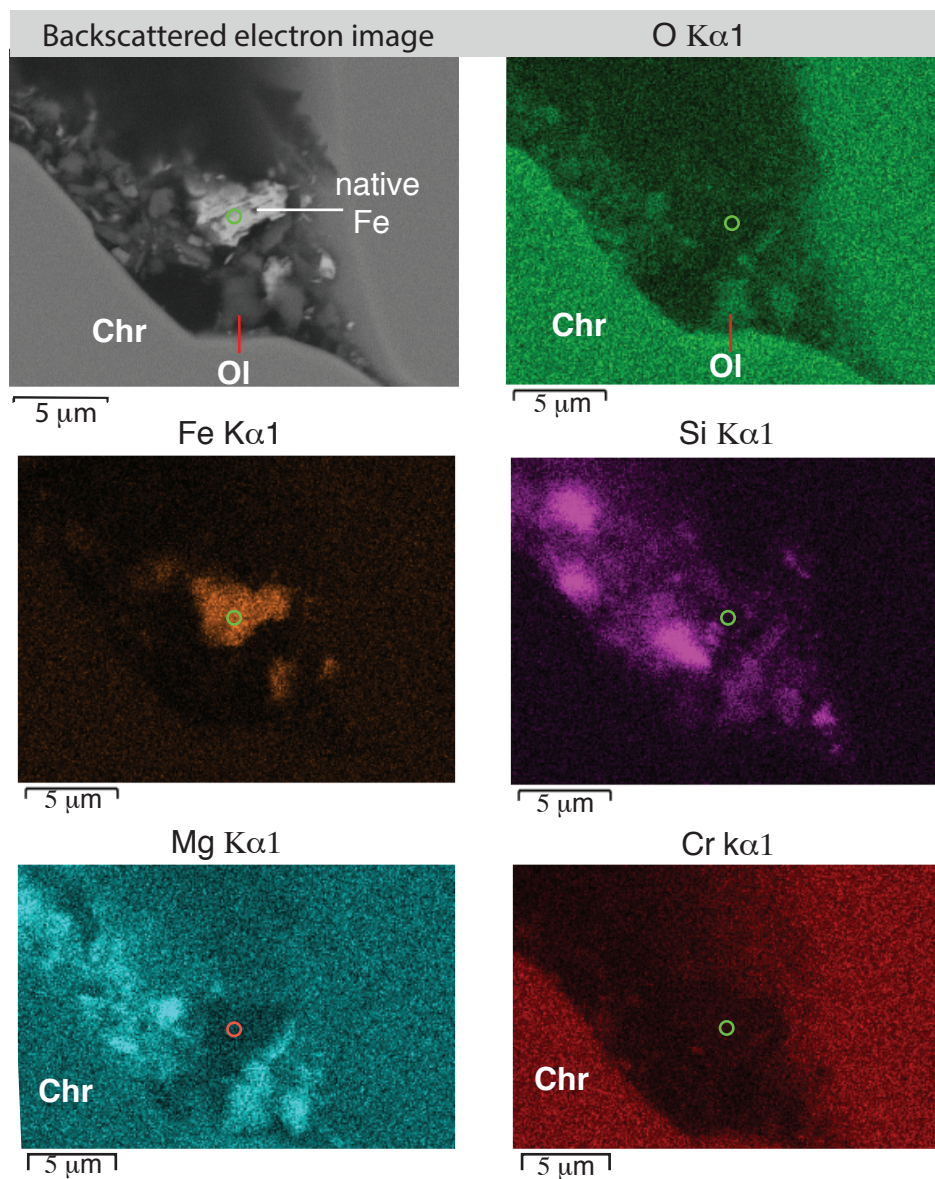


# APPENDIX

Previously separated and identified minerals, native metals and alloys from large samples (500 to > 2000 kg) of the Luobusa podiform chromitite and its wall rock harzburgite (Bai et al. 1993 2000 2003; Robinson et al. 2004; Xu et al. 2009 2015; Yang et al. 2014) are summarized in Table A1.

The native Fe is near pure iron indicated by EDX spectrum and X ray element maps that are shown Fig. A1.



**FIGURE A1.** Backscattered electron image and X ray maps of Fe, O, Si, Mg and Cr of native Fe. Central part of the native Fe is pure Fe, but its margin partially contains minor Si. Small circles in the native Fe show same position in each map.