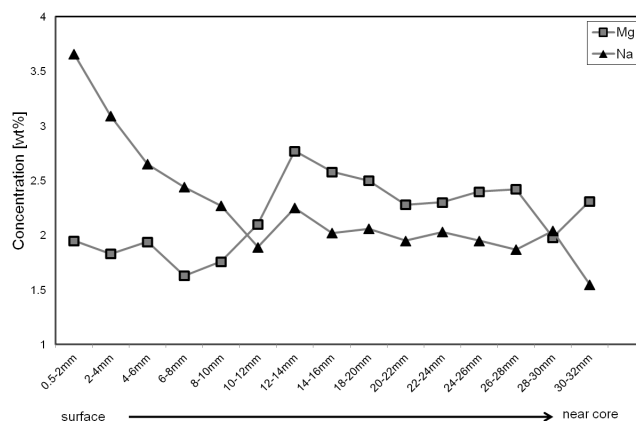


SUPPLEMENTARY FIGURE 1. Typical big ellipsoidal nodule (SO205 44KG-2; 10 x 10 x 6.7 cm) with botryoidal grow structures on all sides of the nodule. The top side of the nodule, which was in contact with the near-bottom water is smooth and the bottom side, which was stacking in the upper few cm of the sediment, is rough.



SUPPLEMENTARY FIGURE 2. The distribution of Mg and Na along a profile through nodule 44KG-2. In the outer parts Na is enriched over Mg, whereas in the inner parts of the nodule Mg is enriched compared to Na.