

- [Text Corrections](#)
- [Figure Caption Corrections](#)
- [Figure Corrections](#)
- [Table Corrections](#)

### Text Corrections

1. (p. 129, middle): "The highest-grade reactions include fluid-conserving dehydration melting reactions."
2. (p. 136, reaction 1): " $Ms + Chl + Qtz = And + Crd + Bt + H_2O$ "
3. (p. 136, reaction 6): " $Bt + Sil + Qtz = Crd + Grt + Kfs + melt$ "
4. (p. 142, reaction 3): " $Ms + Chl + Grt + Qtz = St + Bt + H_2O$ "
5. (p. 146, bottom): "allow testing **of** the calibration of the low-pressure metapelitic"
6. (p. 148, reaction 37): " $Ms = Crn + Kfs + H_2O$ "
7. (p. 154, first paragraph): "(Types 1a - 2a)"
8. (p. 155, last paragraph): Omit "the" from the following phrase: "st-crd-ms, it may be that **the** these assemblages were stabilized by minor components."
9. (p. 160, second full paragraph): Replace "Ky,Sil" with "**Ky/Sil**"
10. (p. 167, last line): "**andalusite**"
11. (p. 169, second line): "**assemblages**"
12. (p. 182, second line): Add "**(18)**" after the reaction " $Bt + Al_2SiO_5 + Qtz = Crd + Kfs + H_2O$ ."

### Figure Caption Corrections

1. Fig. 35. Insert "above" into the expression ",accounting for the **above** topology of divariant"
2. Fig 35. Add at the end of the caption: "The majority of natural data support the topology in Fig. 36."
3. Fig. 53. Add ")" to "ms-qtz-and(sil)-kfs-crd-bt."

### Figure Corrections

- Fig. 33. Replace with the enclosed new [Figure 33](#).
- Fig. 47. Replace with the enclosed new [Figure 47](#).
- Fig. 48. Replace with the enclosed new [Figure 48](#).

### Table Corrections

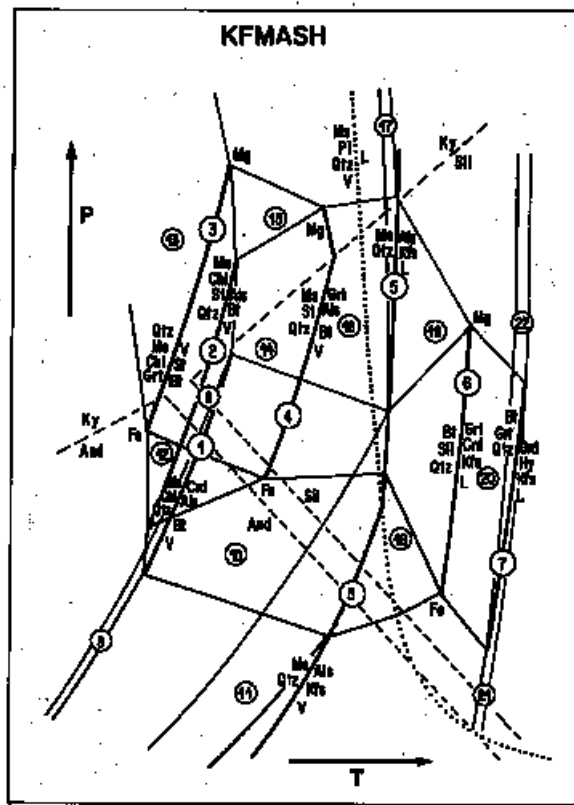
Table 3 (p. 118):

Phases always present: Bt + Qtz + (V or L) present in all assemblages  
Kfs present in all assemblages upgrade of reaction **5**  
Ms present in all assemblages downgrade of reaction **5**

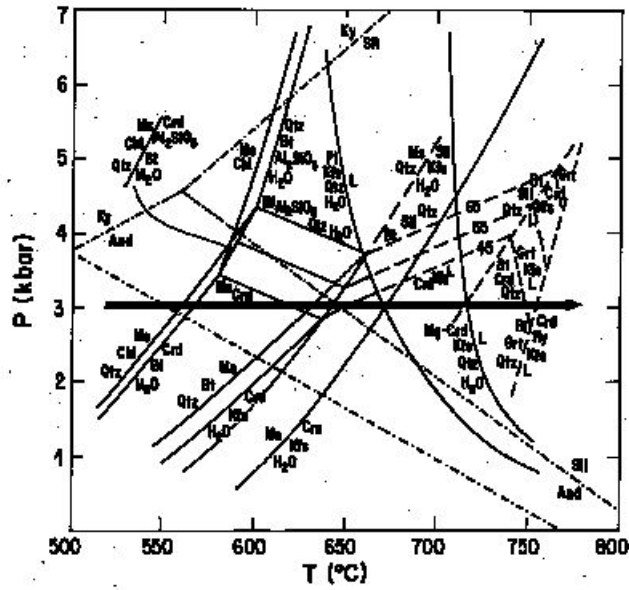
Exclusions: Chl+Kfs, St+Kfs, Ms+Crd+St, Crd+Grt+Ms, **Ms+Chl+Grt+Al<sub>2</sub>SiO<sub>5</sub>**, Hy+Chl,  
Hy+Ms, Hy+Al<sub>2</sub>SiO<sub>5</sub>, Hy+St

### Corrected Figures

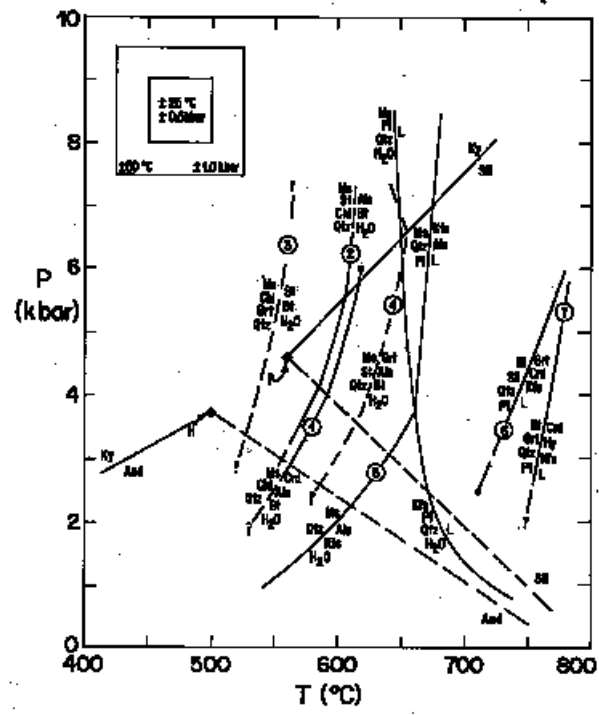
#### Corrected Figure 33



Corrected Figure 47



Corrected Figure 48



===== end of correjions =====