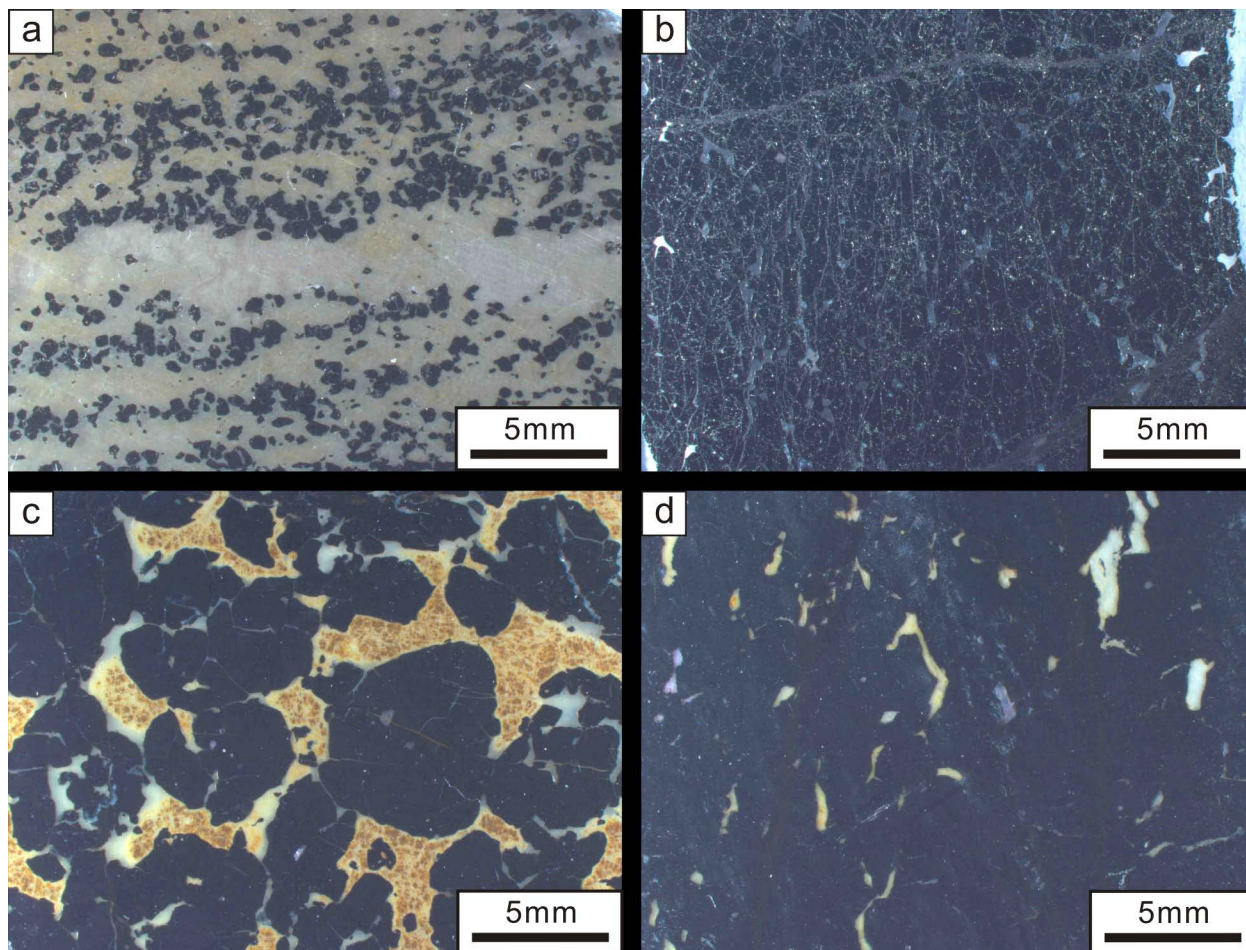


SUPPLEMENTARY FIGURE 1. Tectonostratigraphic section of the Aladag region, modified after Polat et al. (1996).



SUPPLEMENTARY FIGURE 2. Photos of different chromitite types under the microscope. (a) Disseminated chromitites in the cumulate dunites; (b) Massive chromitites in the cumulate dunites; (c) Nodular chromitites in the harzburgites; (d) Massive chromitites in the harzburgites.