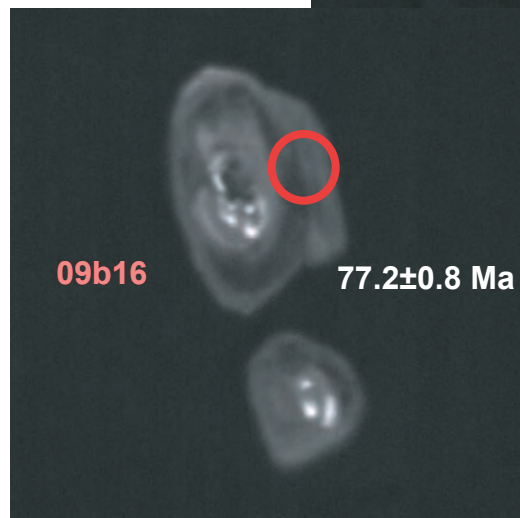
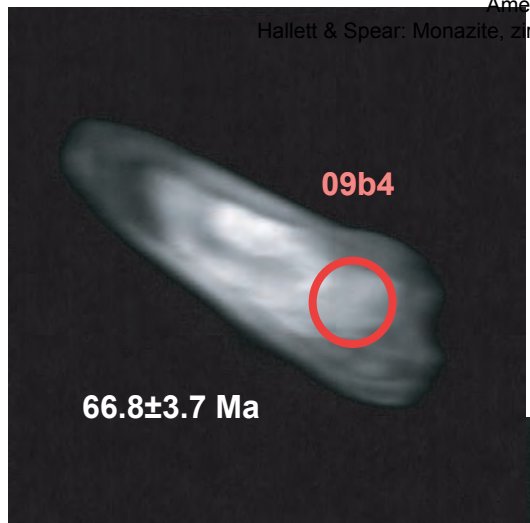


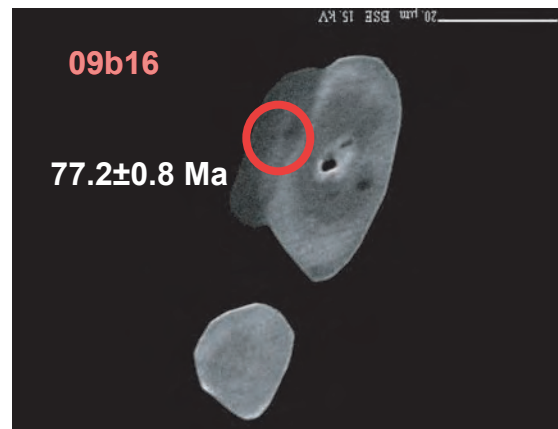
Spot_Locations.pdf

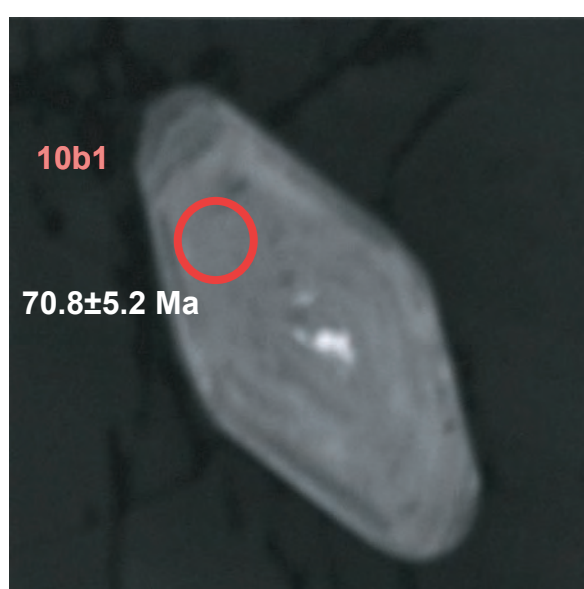
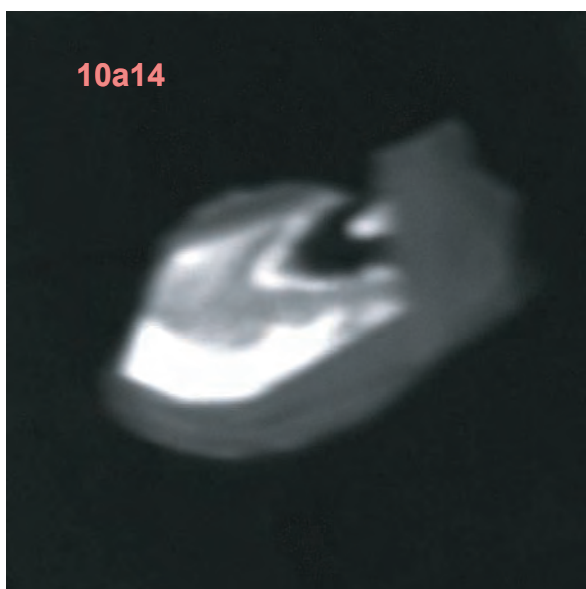
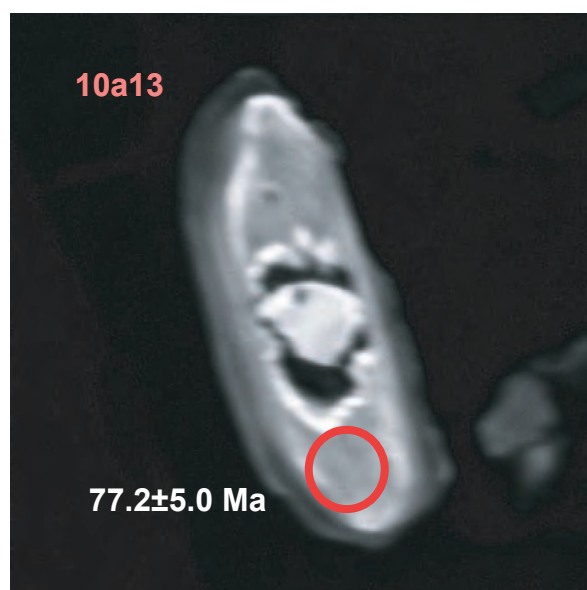
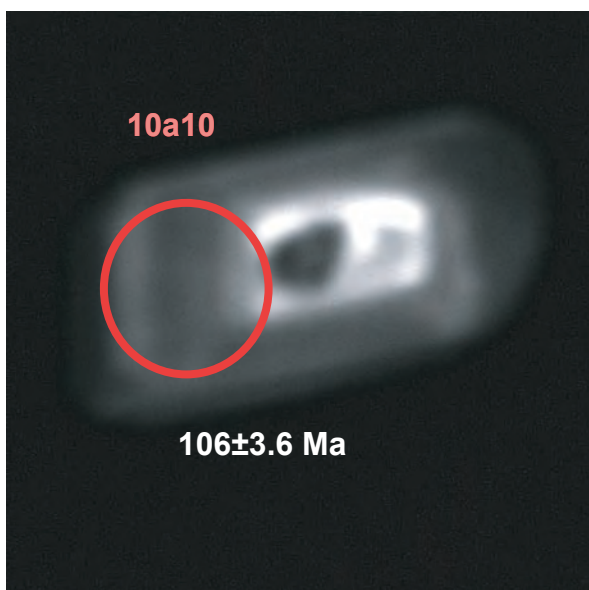
This file contains grain imagery with spot locations for SHRIMP analyses of zircon and monazite and electron probe analyses of monazite. SHRIMP spot locations are shown as red (zircon) or white (monazite) rings centered on the analyzed portion. Small dots on monazite maps/BSE images are locations for focused beam electron probe analyses of monazite. Several X-ray maps were distorted by surface charging effects during prolonged mapping, and hence BSE images are shown instead. Full details of analytical methods appear in the supplementary data file Detailed_Analytical_Methods.doc.

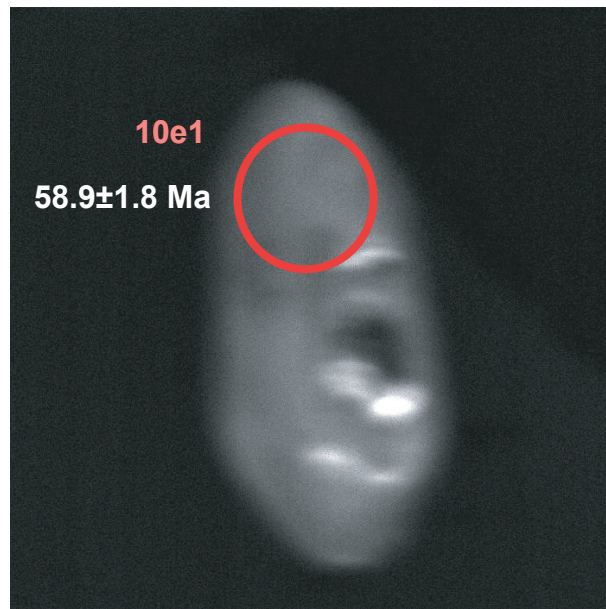
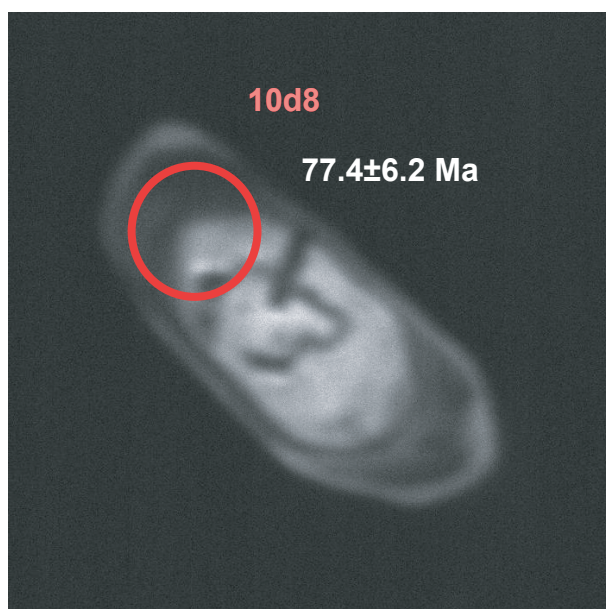
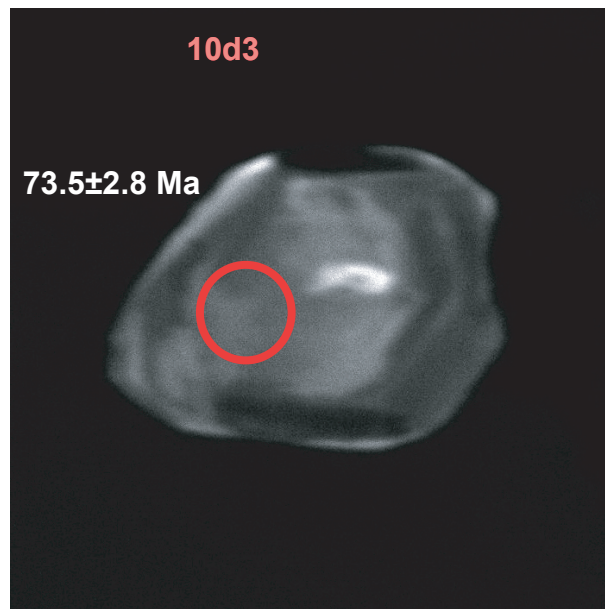
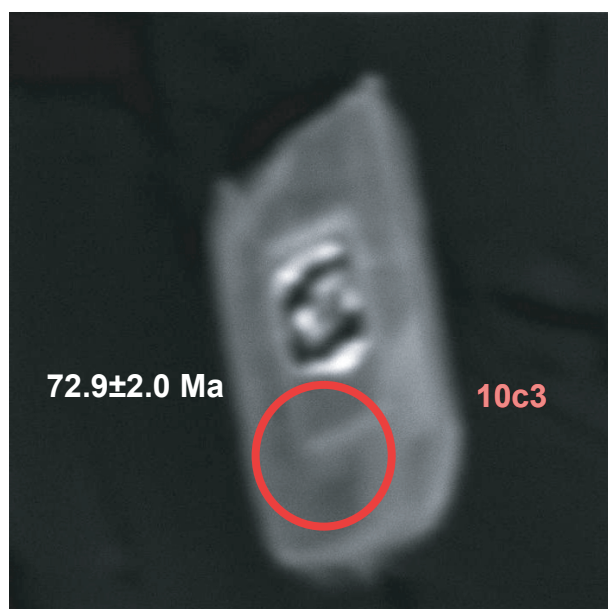
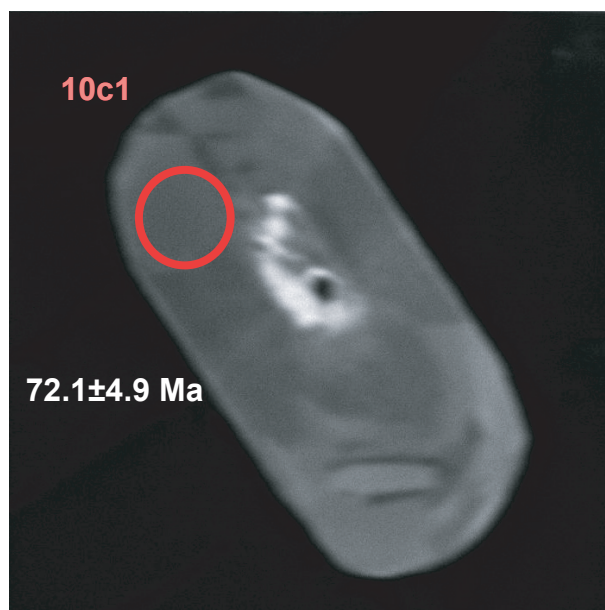
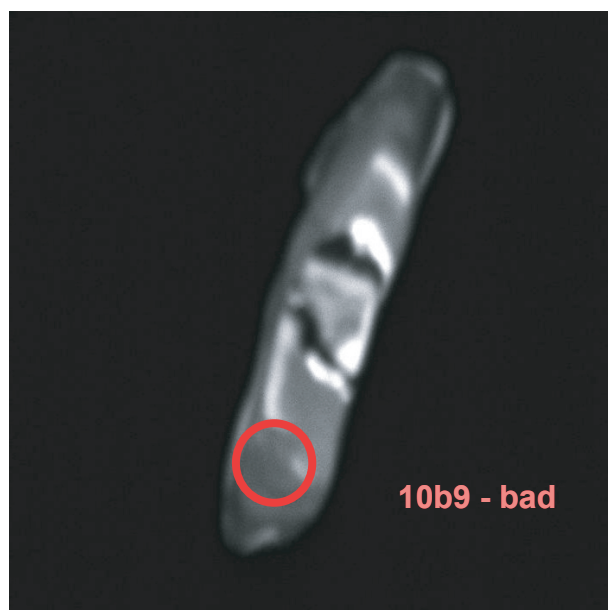
Grains are shown in the following order:

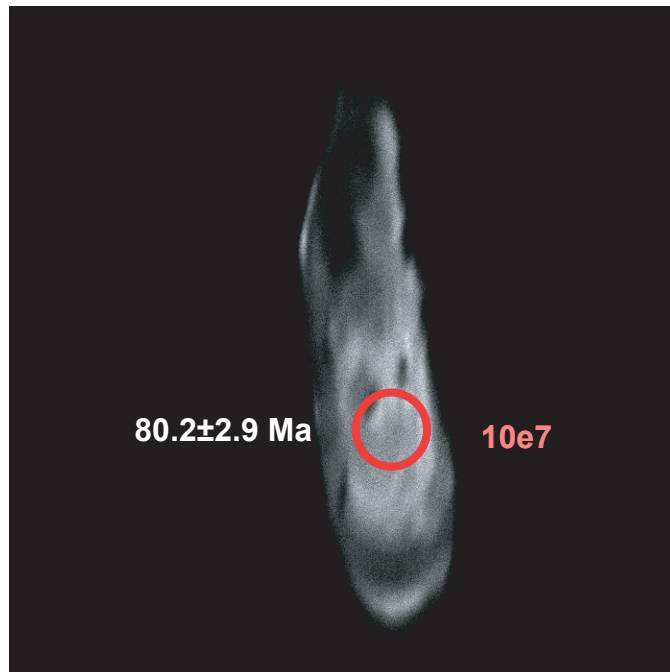
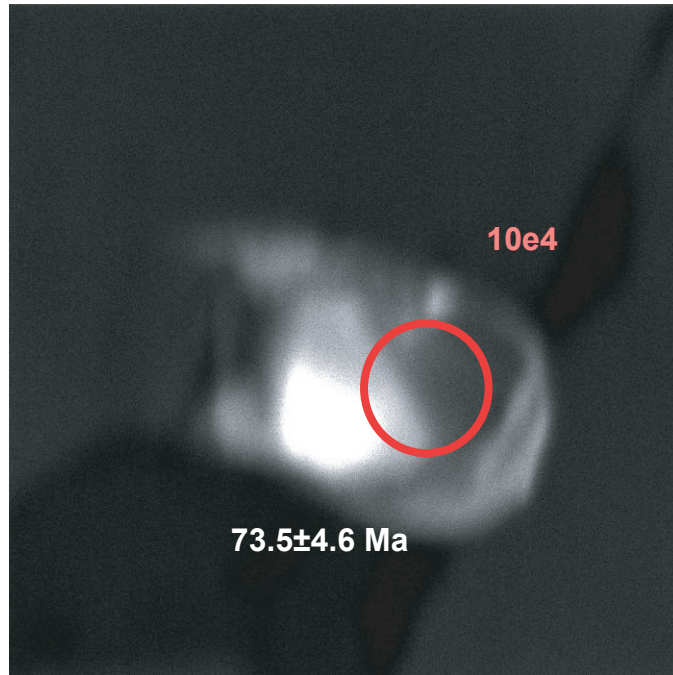
WLN zircon	2
EH09 zircon CL	2
EH09 zircon BSE	3
EH10 zircon CL	4
EH09 zircon BSE	7
LBB zircon	10
EH49 zircon CL	10
EH09 zircon BSE	12
WLN monazite X-ray Maps and BSE	14
EH09 monazite	14
EH10 monazite	15
EH21 monazite	19
LBB monazite X-ray Maps and BSE	21
EH30 monazite	21
EH31 monazite	22
EH45 monazite	25
EH49 monazite	27
EH48 monazite	30

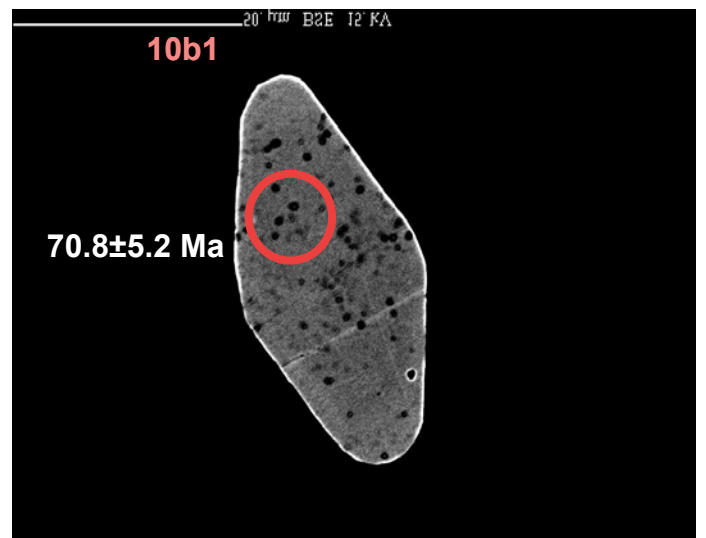
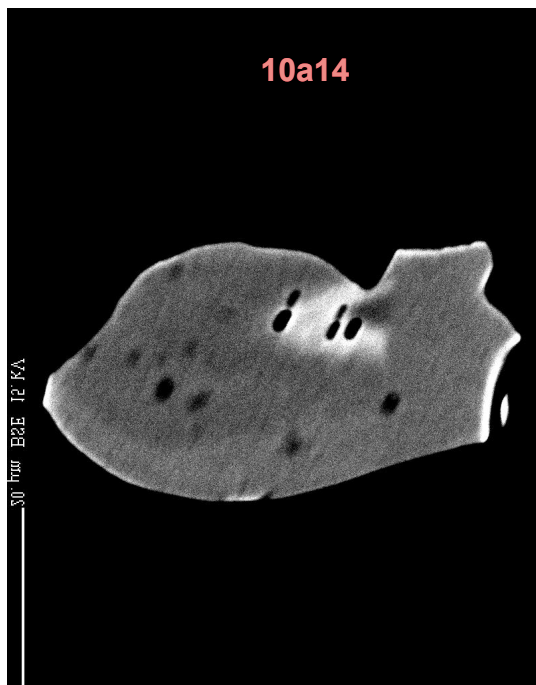
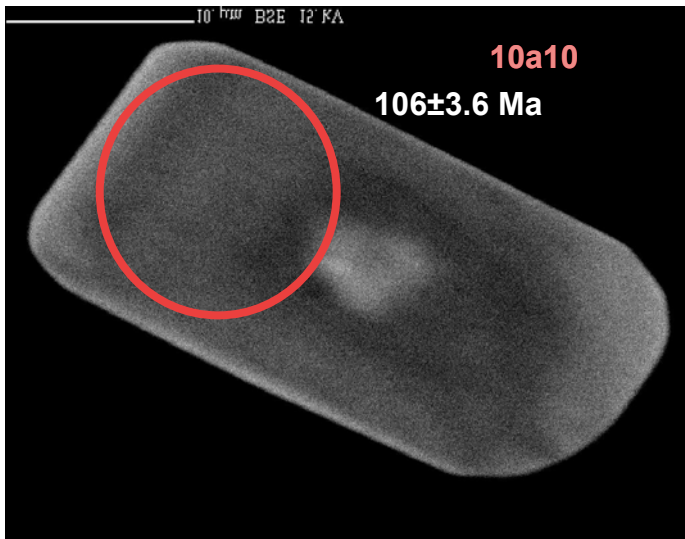
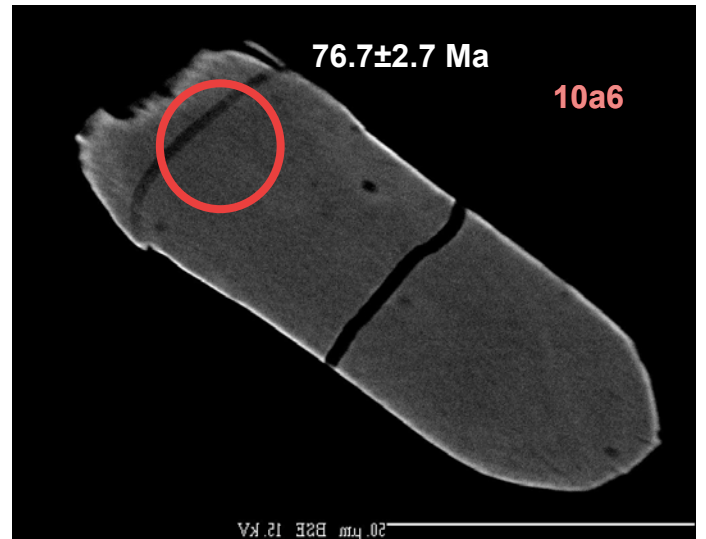
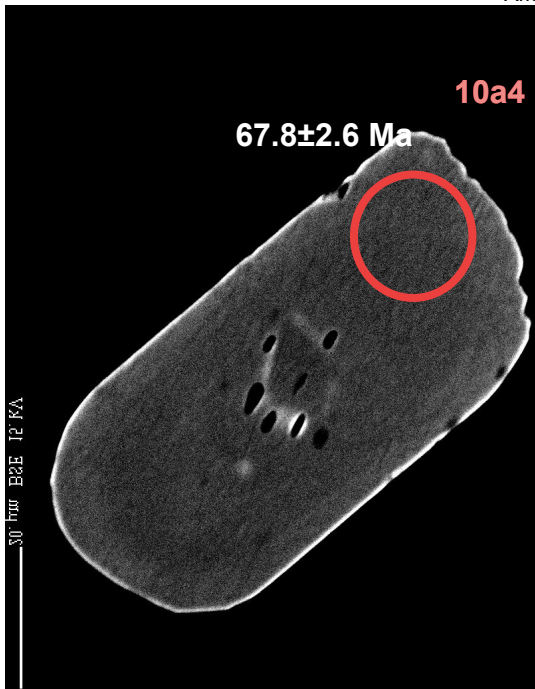


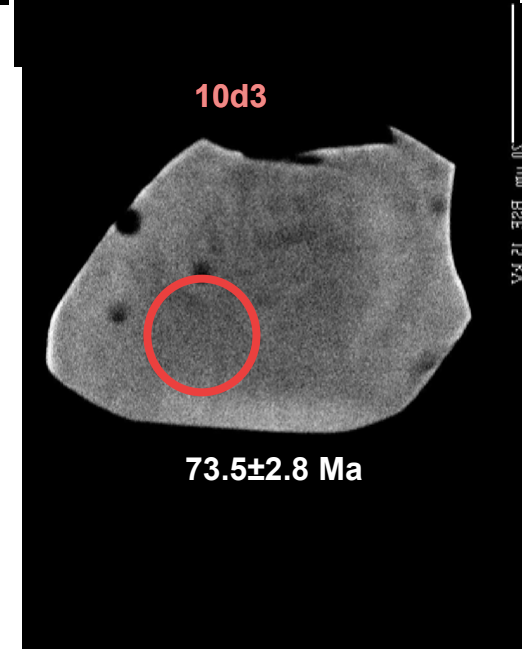
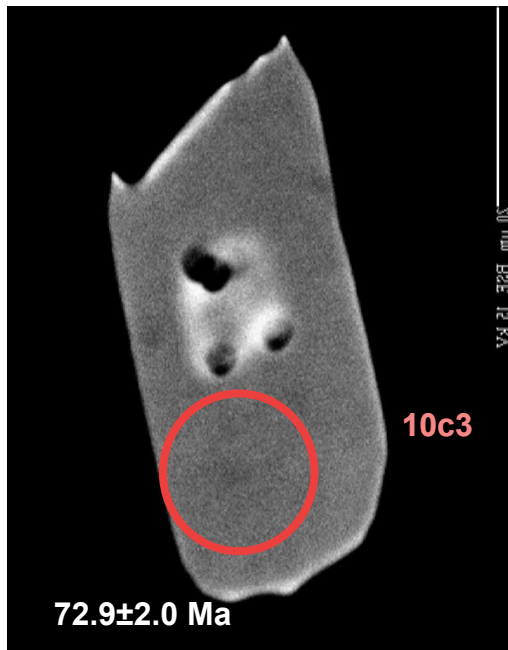
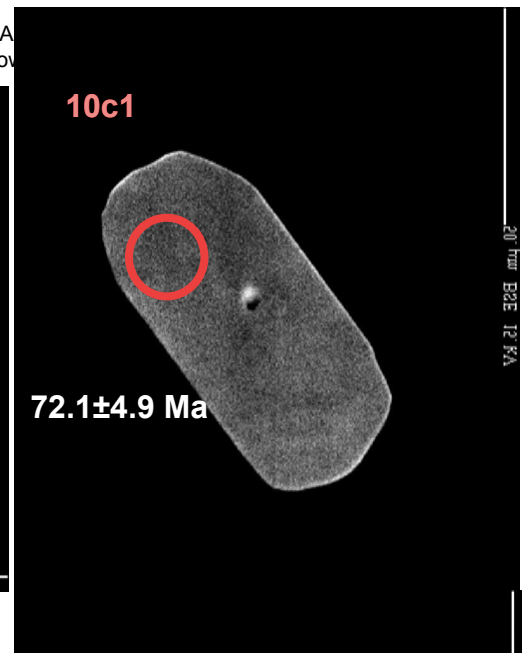


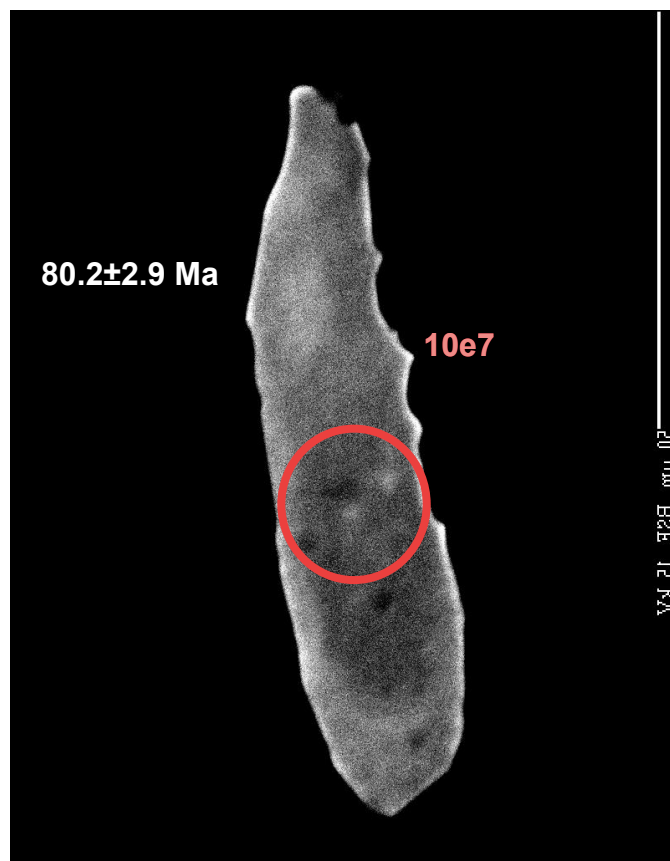
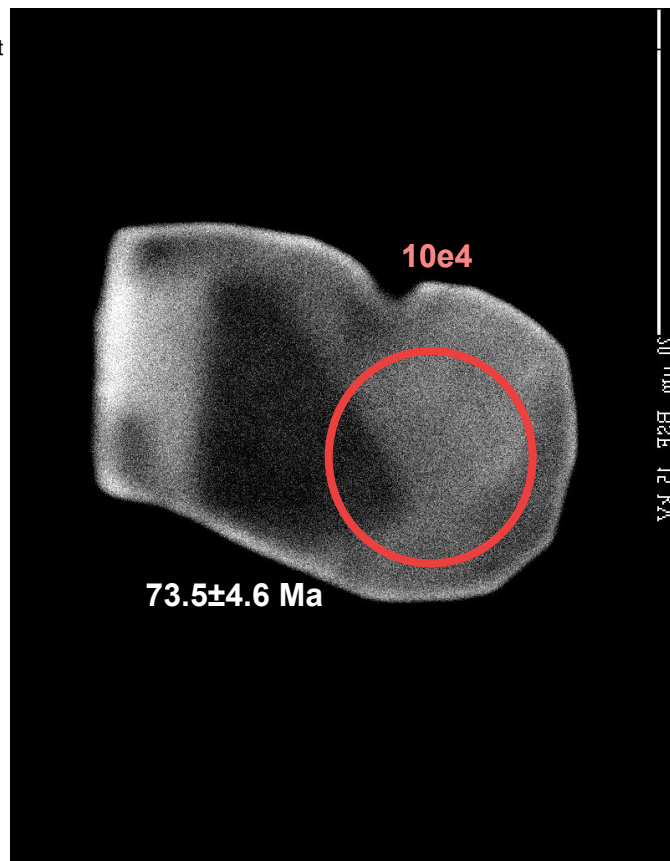


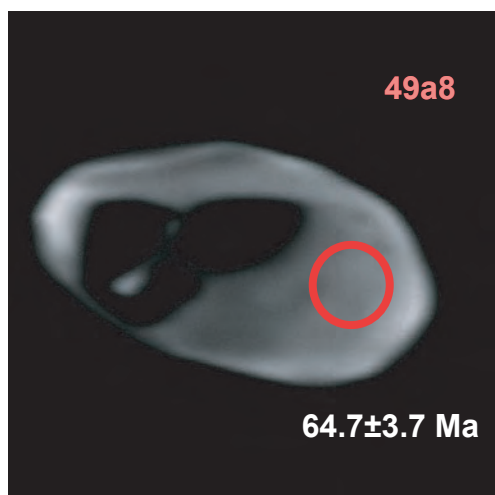
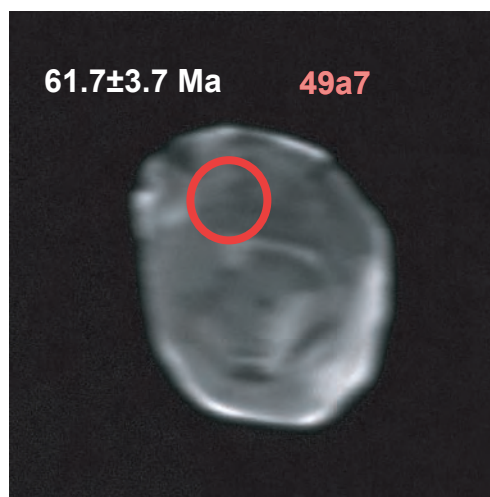
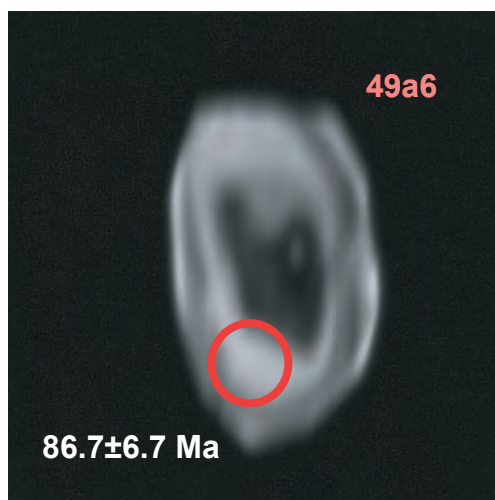
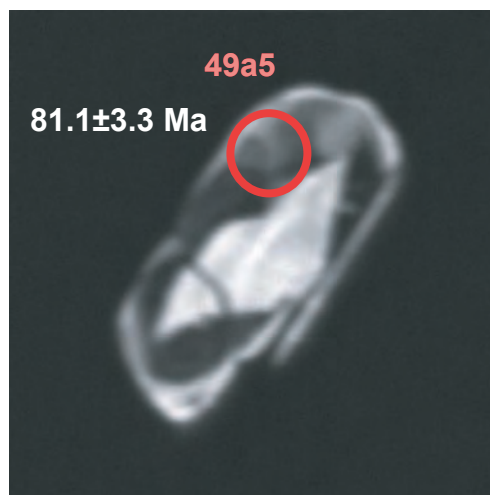
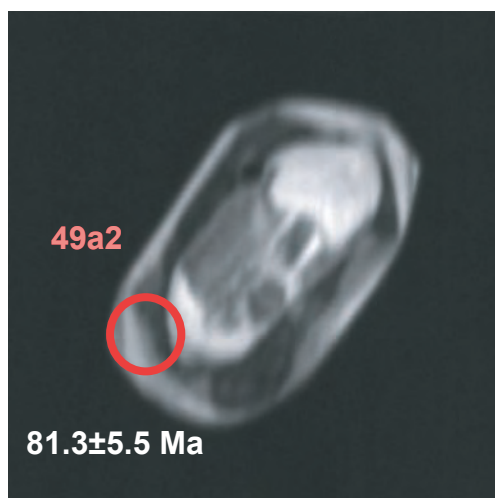


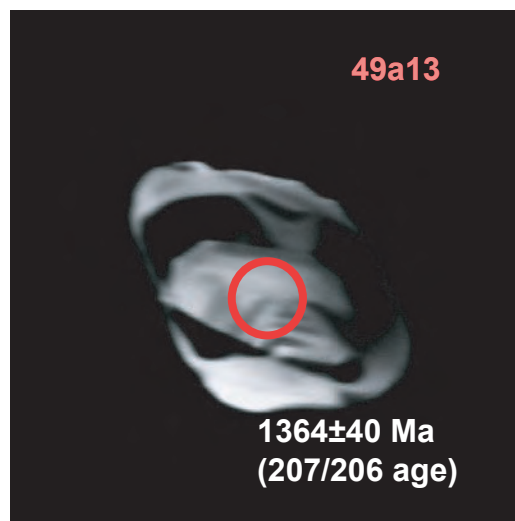


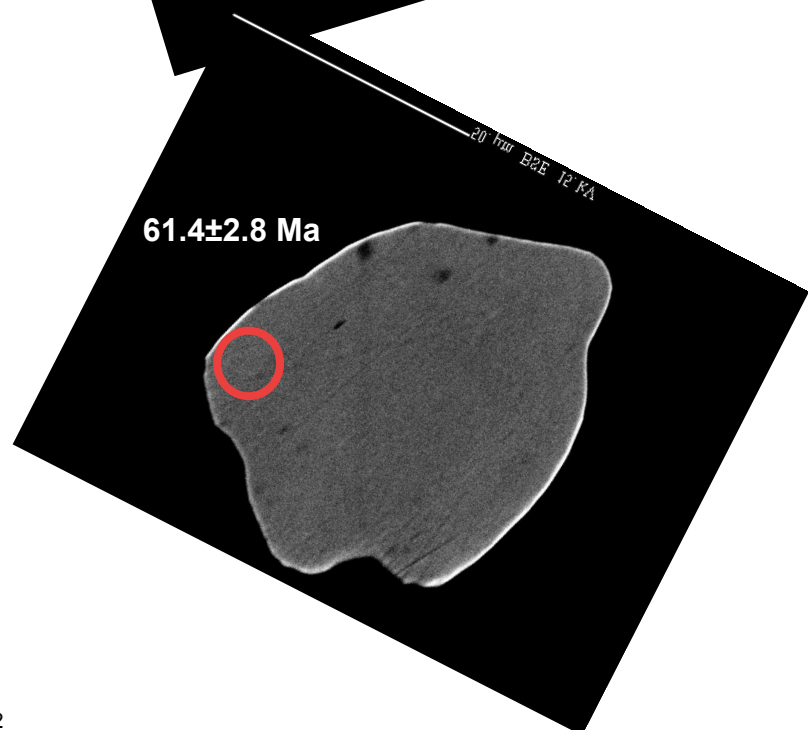
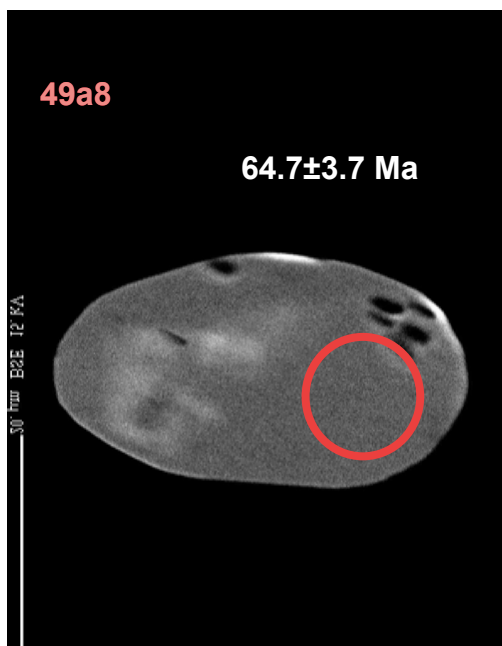
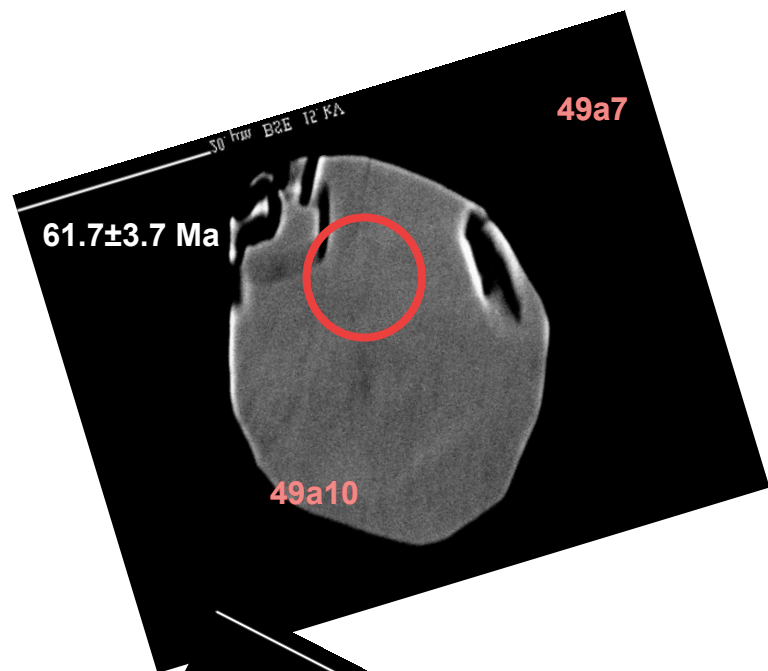
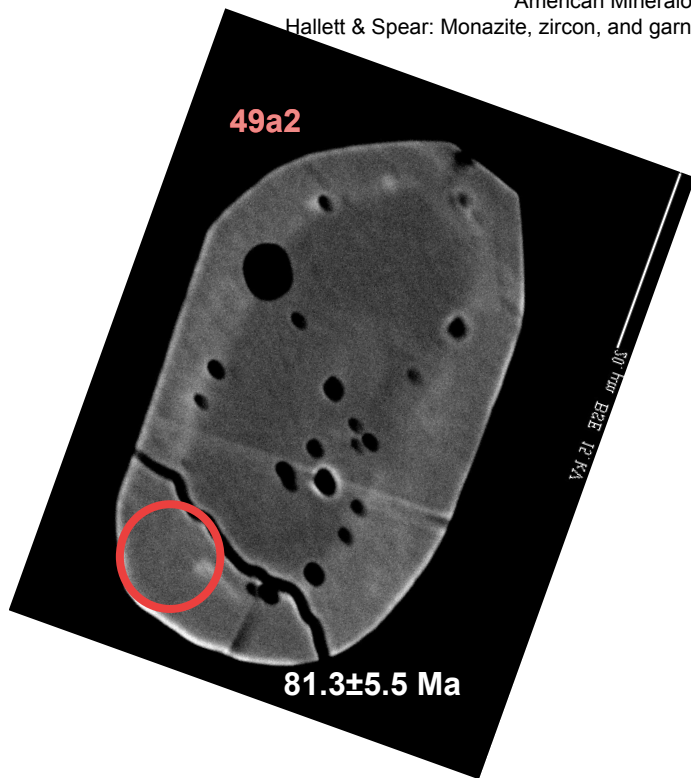




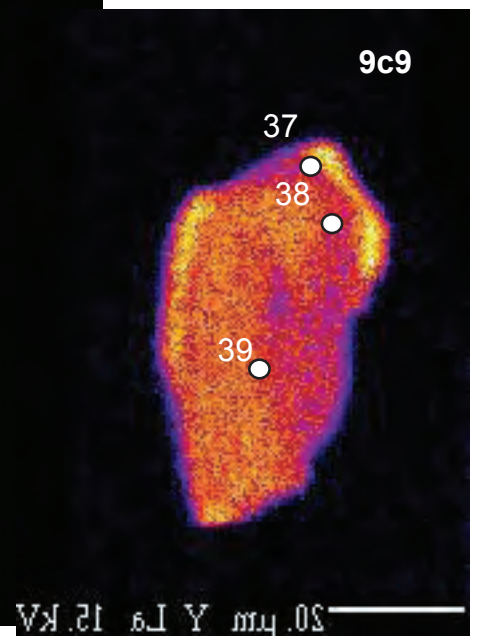
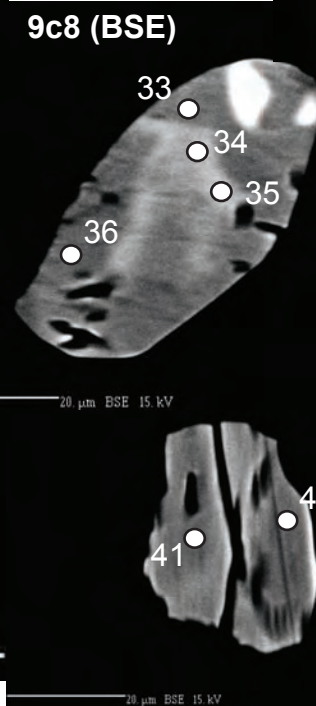
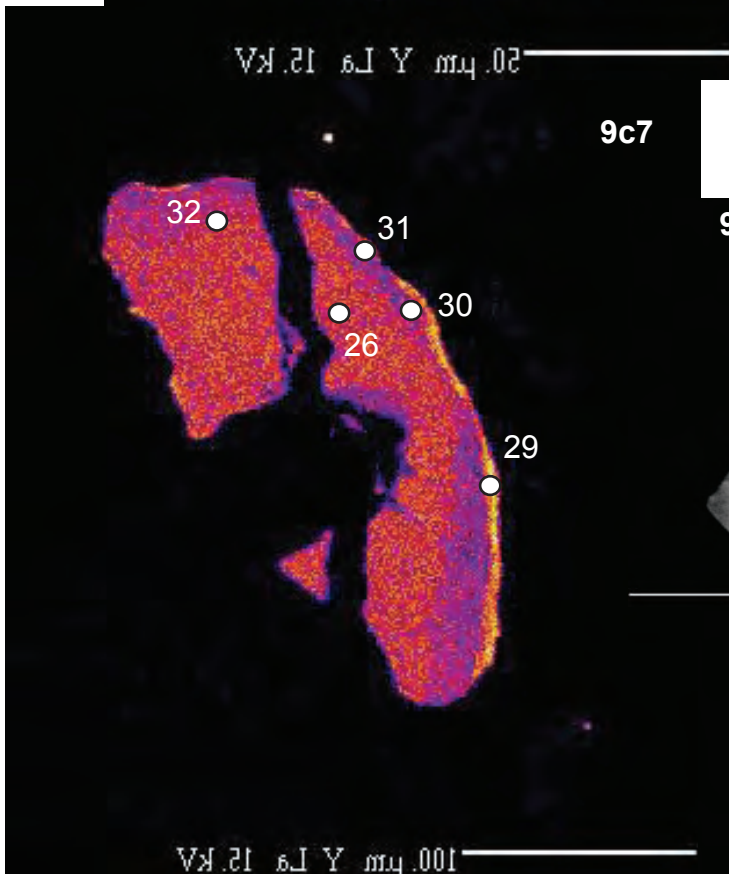
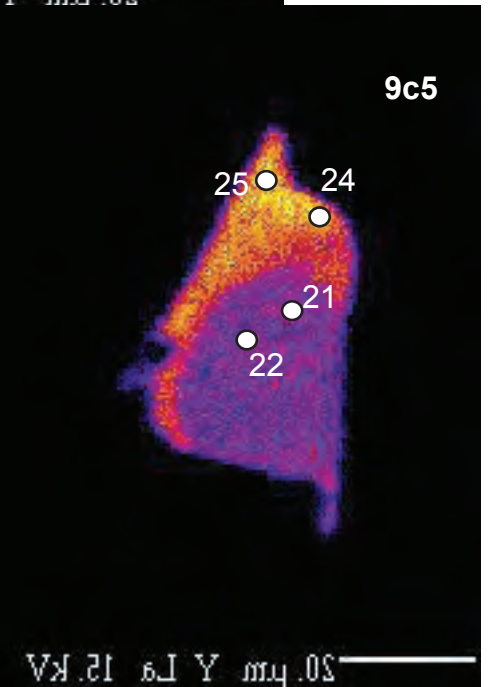
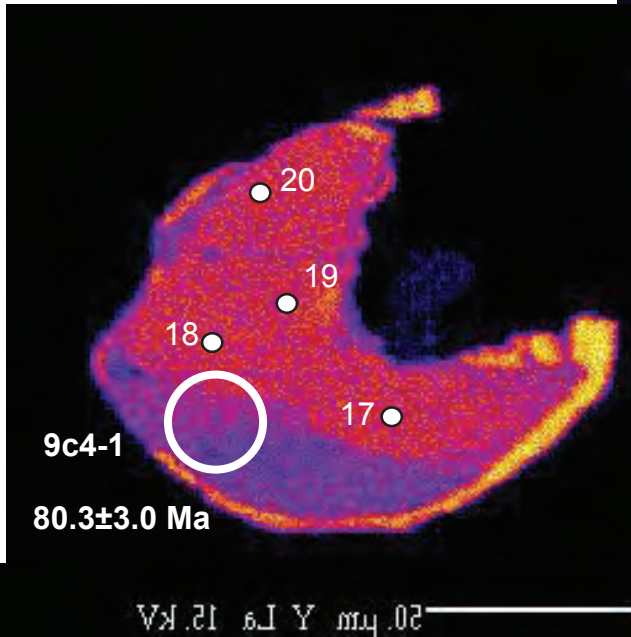
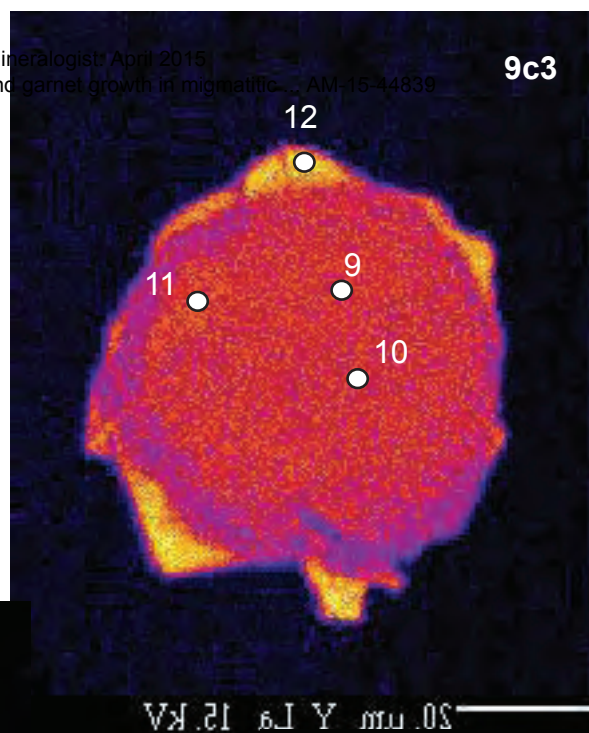
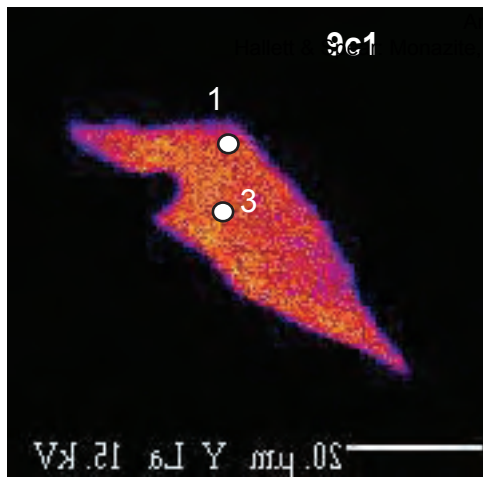


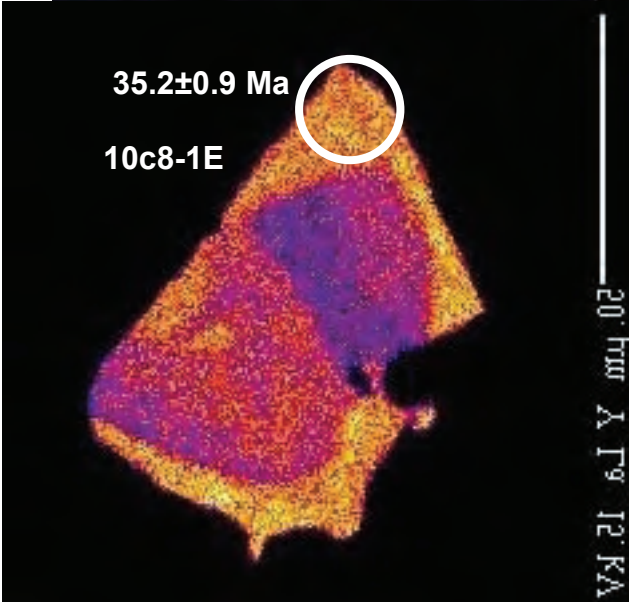
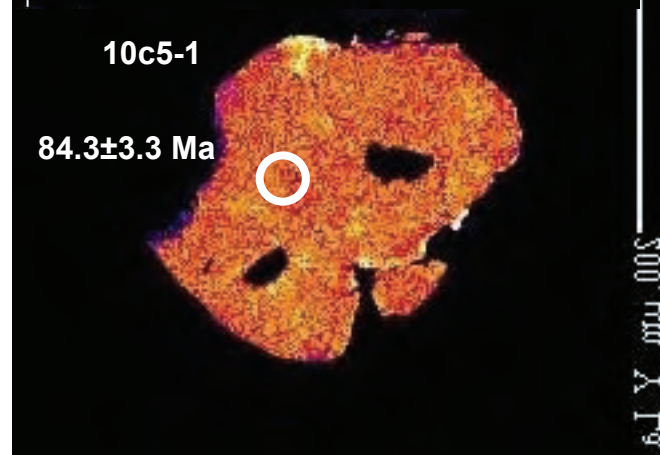
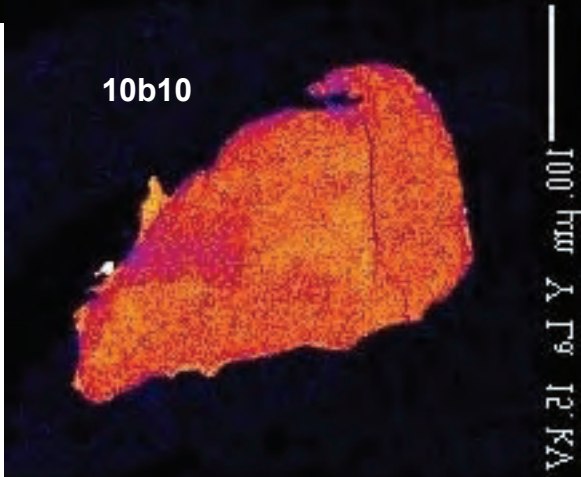
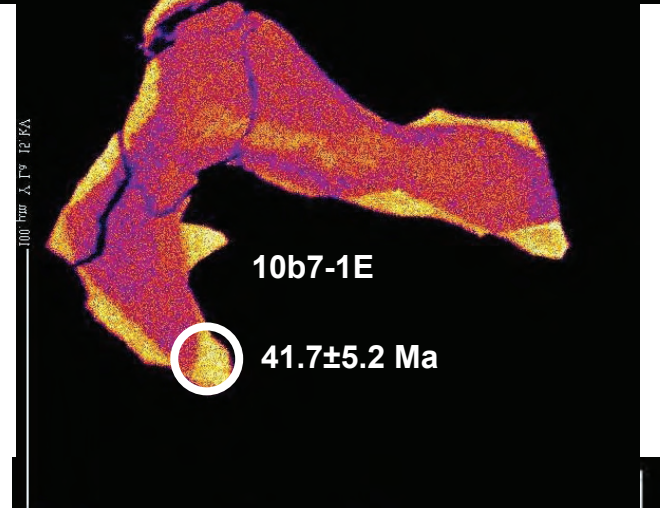
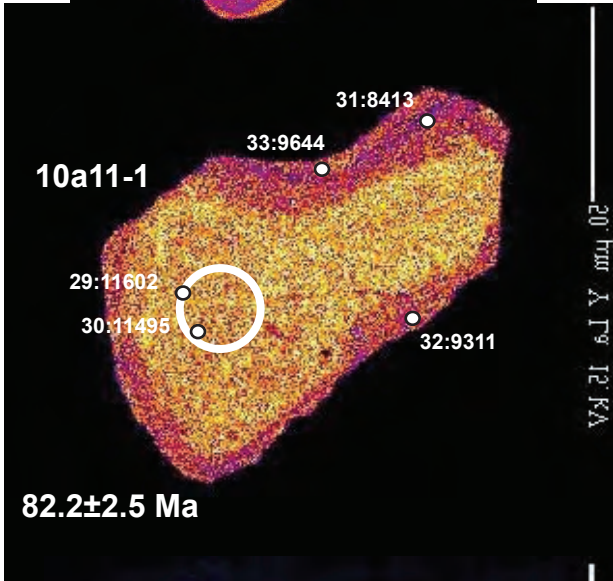
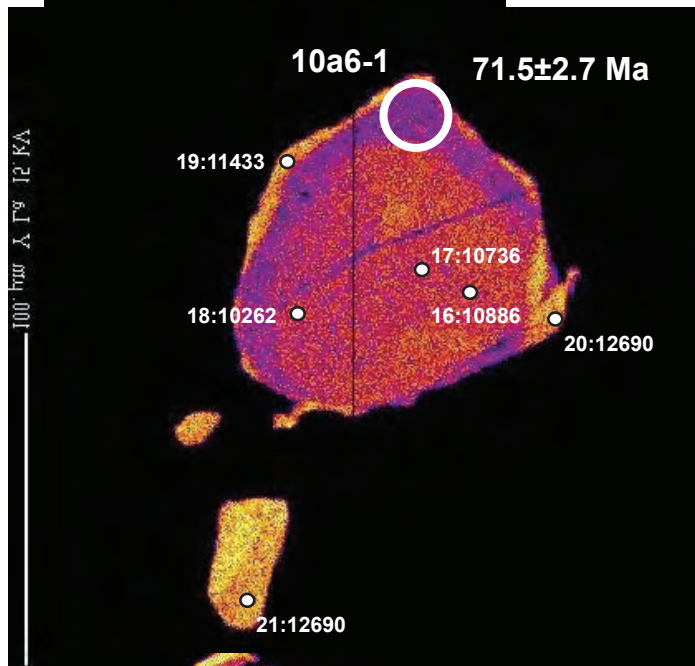
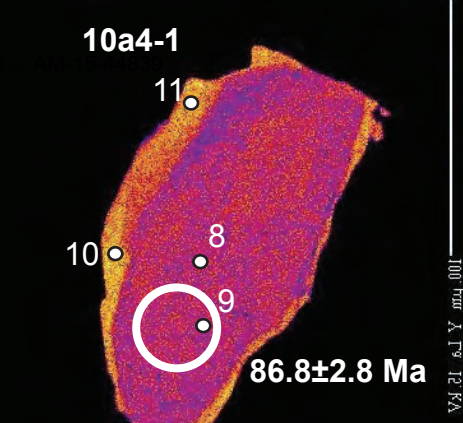
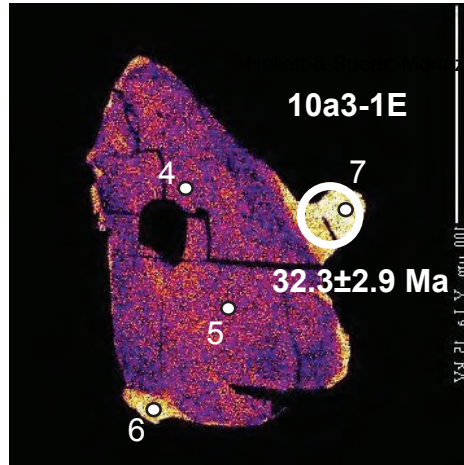






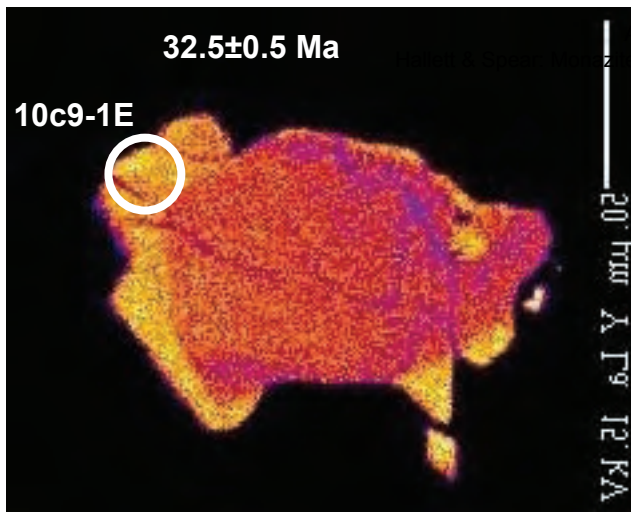






32.5±0.5 Ma

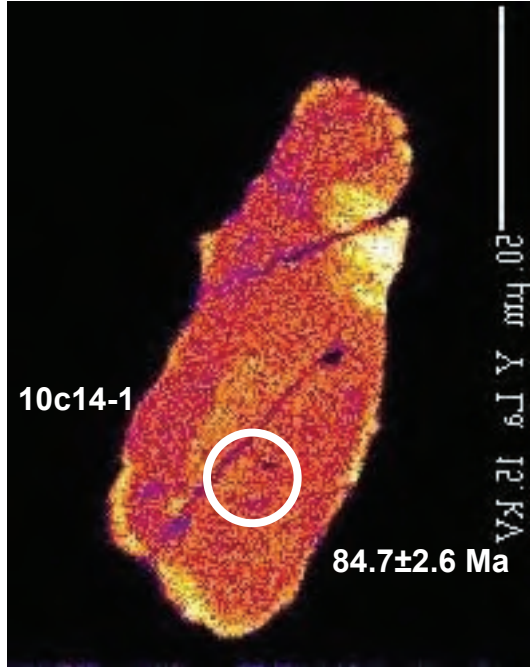
10c9-1E



American Mineralogist: April 2015
... zircon, and garnet growth in migmatitic ... AM-15-44839

10c14-1

84.7±2.6 Ma

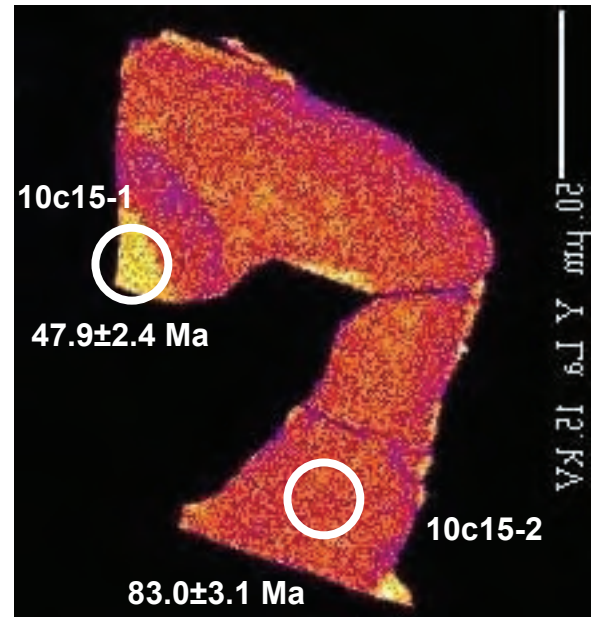


10c15-1

47.9±2.4 Ma

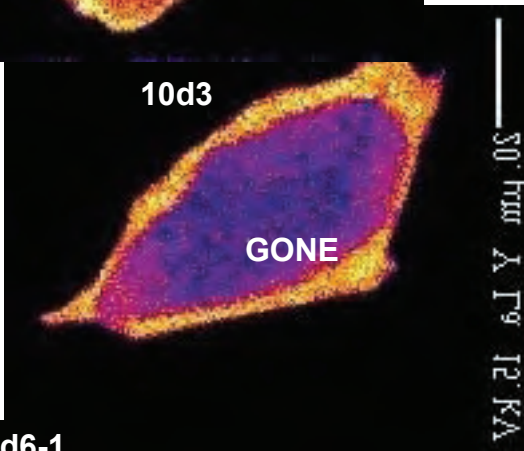
10c15-2

83.0±3.1 Ma



10d3

GONE

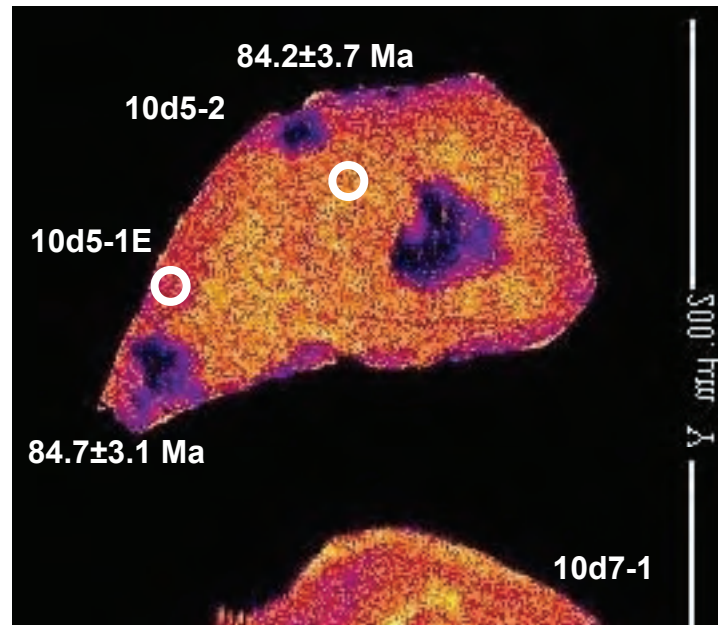


84.2±3.7 Ma

10d5-2

10d5-1E

84.7±3.1 Ma

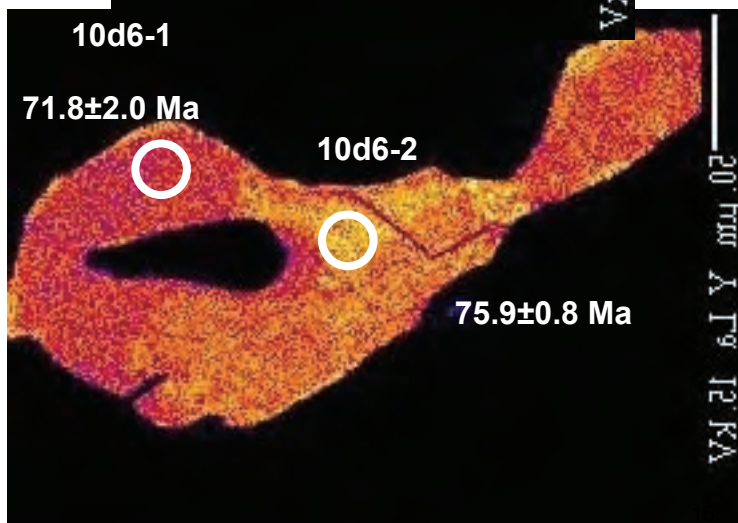


10d6-1

71.8±2.0 Ma

10d6-2

75.9±0.8 Ma



10d7-1

82.1±2.5 Ma

