

# The Lattice

Vol. 1., No.1 February, 1985

## 1985 Council Assumes Office in Reno

Hans P. Eugster, 1985 president, was handed the gavel of office during the annual MSA Luncheon in Reno, NV, November 6. As one of his first actions in office, Eugster formed the Development committee to look at the future role of MSA, both financially and intellectually. Eugster communicates directly to MSA members in his column located on page two of this newsletter.

In his final act as President, Charles T. Prewitt, 1984 president, initiated the tradition of presenting the new incoming president with a gavel engraved with the president's name and year of office. Eugster, telling luncheon participants how much Prewitt enjoyed using the gavel while in office, reciprocated by giving Prewitt a gavel of his own engraved with his name and year of office.

Joining Eugster on the 1985 Council are: Paul B. Barton, Jr., Vice-President; Charles T. Prewitt, Past President; Henry O. A. Meyer, Secretary; Gordon L. Nord, Jr., Treasurer; Gordon E. Brown, Jr., Councillor 1984-1986; James R. Craig, Councillor, 1983-1985; Cornelis Klein, Councillor 1985-1987; Anthony J. Naldrett, Councillor, 1985-1987; Alexandra Navrotsky, Councillor, 1983-1985; and Hugh P. Taylor, Jr., Councillor, 1984-1986.

With the exception of Meyer who serves a two-year term, the officers were elected by member ballot. Klein and Naldrett were elected in the Councillor race and will serve a two-year term.

The 1985 Council met for the first time Tuesday, November 6, following the MSA Luncheon. At this meeting, the editor and managing editor for *The American Mineralogist* were appointed for 1985, and committee chairs and other annual appointments were designated. Michael J. Holdaway and Linda Dungan will remain on the journal staff as editor and managing editor respectively. The names of committee chairs may be obtained by writing the Business Office.

Of major concern to the 1985 council is a membership drive and expanded promotional activities. A membership

committee, chaired by Charles Gibert, will be making proposals to Council at its Spring meeting. In addition, the Business Office staff will be submitting proposals for promotional activities designed to attract more institutional subscribers for the journal and advertise the *Reviews in Mineralogy* volumes.

The 1985 Council will meet again prior to the AGU Spring Meeting in Baltimore, and for the final time prior to the MSA/GSA meeting in Orlando in October.

## 1984 Council Adjourns After Completing Full Business Agenda

Meeting for the third and final time in Reno, NV, prior to the MSA/GSA Annual Meeting, the 1984 Council adjourned after considering several important issues.

Primary among the actions adopted by the Council was the decision to expand the President's Newsletter to include member news, as well as expanded coverage of MSA programs and activities. *The Lattice* will be published quarterly, on or about February 1, May 1, August 1, and November 1, each year. MSA members are encouraged to respond to ideas and activities reported in the newsletter by writing directly to the contact person, or the Business Office.

In other action, Council announced that Francis J. Turner will receive the Roebling Medal, MSA's highest honor, at the 1985 MSA Luncheon. John M. Ferry has been selected to receive the MSA Award. The action was based on recommendations from the respective committees. Each gentleman will join a distinguished list of colleagues who have been honored by MSA in the past.

A request was also made for members to

Continued on page 9.



1984 MSA President Charles T. Prewitt greets Roebling Medalist Paul B. Barton, Jr. (above) during presentation at the Annual Awards Luncheon. In the photo below, Prewitt gives the certificate to Bernard John Wood, the 1984 MSA Award recipient. The text of each recipients' speech, as well as introductory remarks by Philip M. Bethke and William S. MacKenzie, respectively, will be printed in a future issue of *The American Mineralogist*.



# Key Word for 1985: Communication

## Dear Members and Friends:

You cannot help notice that we have made changes in format, size and content of the newsletter, the traditional vehicle for communication between MSA officers and members. But, we have made **no changes in cost**. By including announcements for the Annual Meeting and the membership directory in *The Lattice* we hope to be able to prepare four editions yearly and, by shopping around for printers, to stay within the budget set by Council.

The newsletter will be edited by Barbara Minich, Executive Secretary, and will keep members better informed of Society activities, problems and aspirations. I hope the format will remain flexible and responsive to the wishes, needs and suggestions of the membership, and I hope that you let Barbara and me have your reactions and suggestions.

The big news for you and your elected officers of course is the fact that we now have an Executive Secretary in Washington who is experienced and dedicated and has a strong desire to serve you. I'm sure many of you have noticed the dramatic improvement in the way the day-to-day business is conducted. Book orders are now filled out of the business office. Sales and membership renewals have improved dramatically, complaints have dwindled, and we are working on further improvements.

I thought our Annual Meeting in Reno was excellent, even though problems occurred due to a high rejection rate of unsolicited papers, but more of this later. For me a very important event was the Past President Breakfast, at which a number of challenging suggestions were made with respect to revitalization of the Society.

Although at the present time the Society is financially healthy there has been little or no growth in membership and there is no mechanism for long-range planning with respect to the Society's goals. What do we have to do to insure future health, to attract

new members and to serve our present members better? I have asked Paul Barton, our Vice President, to serve as Chairman of a Development Committee which is to ponder these questions and make preliminary recommendations at the 2nd 1985 council meeting in Baltimore, in May.

During the last four years, *The American Mineralogist* has been edited superbly by Mike Holdaway, but Mike has decided that five years on the job is enough. We could not convince him to change his mind. A search for a replacement was carried out by Ean Zen, Don Lindsley and myself. As a result of this search, Council has selected Jim Munoz of the University of Colorado at Boulder, to be the new editor. We are very lucky that Jim is willing to take over in November and I can assure you that he will provide the same vigorous leadership that Mike did. Jim is a first-class mineralogist with an extensive list of publications on natural and synthetic minerals. He is a thoughtful and well-organized person and I'm sure you will enjoy working with him.

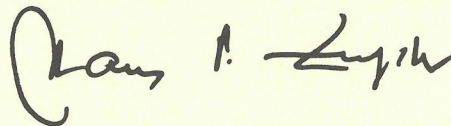
Next, a point raised by Maryellen Cameron, an MSA delegate to the Joint Technical Program Committee (JTPC). Maryellen states that the GSA rejection rate of oral papers caused "the mineralogy/crystallography abstracts to be 'swamped' by the geology and petrology abstracts." She recommends that in order to insure the vitality of the mineralogy/crystallography segment, a full day of oral presentations should be reserved for these papers. What do you think??

Finally, the IMA Commission on New Minerals and Mineral Names is concerned about two problems: 1) the use of a new mineral name before it is approved by the Commission, 2) the misuse of mineral names. Concerning the first item, approval by the Commission usually requires several months. The manuscript should be submitted to the Commission at the same time it is submitted

for publication to *The American Mineralogist*. Concerning the misuse of mineral names, one of the most common errors arises in describing a mineral in terms of an end member which is less than 50 percent of the composition. For example, Cr-bearing Kyanite is correct, Cr-Kyanite is wrong. Over the next several months, the Commission will be publishing a set of guidelines for the correct usage of mineral names. These guidelines will be published in a future issue of *The American Mineralogist*. See Volume 67 of the journal, pages 190-191, for a suggested outline for new mineral descriptions.

Now a confession. I took on this job with great trepidations, being hopelessly overextended already. However, up to now it has been more fun and less drudgery than I expected. This is due largely to the excellent staff in Washington and my fellow officers. May MSA and everyone of you have a good 1985.

Your President,



Hans P. Eugster

## Council Selects Slate of Candidates for 1985 Ballot

A slate of candidates to appear on the 1985 ballot has recently been selected by the Council. The candidates to appear on the ballot are: President: Paul B. Barton, Jr.; Vice President (one to be elected): Bernard W. Evans, Paul R. Ribbe; Secretary: Henry O.A. Meyer; Treasurer: Gordon L. Nord, Jr. (continuing); Councillors (two to be elected): Eric J. Essene, J. Stephen Huebner, Robert C. Newton, George R. Rossman.

According to the Bylaws, members may nominate additional candidates through April 1, two months following the publication of this newsletter. Nominations made by members will appear on the ballot. Ballots for the 1986 Council will be mailed to all members in April and will include a brief vitae of each candidate.

The *Lattice* is published quarterly (February, May, August, November) by the Mineralogical Society of America. The newsletter is distributed to MSA members as a member service. Articles and letters from readers are welcome.

1985 President: Hans P. Eugster

Past President: Charles T. Prewitt

Vice-President: Paul B. Barton, Jr.

Secretary: Henry O. A. Meyer

Treasurer: Gordon L. Nord, Jr.

Executive Secretary: Barbara B. Minich

Address letters and comments to: The Editor, Mineralogical Society of America, 2000 Florida Avenue N.W., Washington, D.C. 20009; (202) 462-6913.

---

## Book Orders Top Records

The new look and convenience of the renewal form generated an unprecedented number of book orders—over 2400 volumes were sold between November 14 and January 18.

Leading the list of best sellers were the newest volumes in the *Reviews in Mineralogy* series: *Volume 12, Fluid Inclusions*, edited by E. Roedder; and *Volume 13, Micas*, edited by S. W. Bailey. Both were published in 1984.

In an effort to provide prompt and accurate service, all books are now being mailed from the Business Office. The large number of book orders tested the ability of MSA staff members to package and send the volumes, but with few exceptions, orders were filled within 7-10 working days. The Business Office hopes to shorten this time to 5-7 working days in the future. This will mean that most orders shipped within the U.S. will be received in three to four weeks. Non-U.S. shipments will take longer.

Also new is the packaging material used to ship the books. The envelope has been replaced by corrugated cardboard which is wrapped around the books. This should provide adequate protection for the books.

Please note that all items are sent by library rate in the U.S. and by surface mail overseas. Air mail and overnight rates may be obtained from the Business Office. If a book is needed by a certain date, this should be indicated on the order. Every effort will be made to insure that the book is received on time, but unless special handling is requested and paid for, there is no guarantee.

These changes in the way in which orders are filled are part of the many improvements the Business Office is making to provide quality member service.

---

## Introducing "The Lattice"

The Society's newsletter has changed! From first visual appearances to the broad, informational content, *The Lattice* has been designed to provide members with articles and information that will keep them up-to-date on the actions of the Council, requests for member input, and the activities of other MSA members. We have also expanded the number of issues from two per year to four.

Please read this newsletter carefully. Note the deadlines, new members, and other information contained in the many articles in this issue. Future items of interest to be found in the newsletter include the first MSA/GSA meeting notice, the 1985-1988 *MSA Membership Directory*, and the registration materials for the MSA/GSA

---

## Council Elects Fellows; Nominations Open for 1985

Nominated for their outstanding scientific contributions, four MSA members were elected Fellows of MSA by the 1984 Council when it met in Reno, NV, in November. Congratulations to Joseph V. Chernosky, University of Maine; John S. Dickey, Jr., Syracuse University; Walter Trzcinski, Ecole Poly, Montreal; and Jerry R. Weidner, University of Maryland.

Nominations for fellowship in MSA in 1985 will be accepted by the Committee through July 1, 1985. Members who have contributed significantly to the advancement of mineralogy, crystallography, or petrology, or whose scientific contributions utilized mineralogical studies or data, may be designated as Fellows on proper accreditation to and election by the Council.

Nominations must include a sponsor and two other co-sponsors, all three of whom must be members or fellows of MSA. Two of the sponsors must be personally acquainted with the nominee and his/her qualifications.

In keeping with a set of criteria for selection to fellowship adopted by the Council in 1984, nominees should have a minimum of a bachelor's degree in geology or a related field and at least five years of professional experience beyond the last academic degree. Excellence in earth science education and/or outstanding service to the profession are considered to be significant contributions.

Nomination forms may be requested from the MSA Business Office, 2000 Florida Avenue N.W., Washington, D.C. 20009. Completed forms should be sent to Dr. Iris Y. Borg, Chairman, MSA Nominating

Committee for Fellows, Lawrence Livermore National Laboratory, L-203, Livermore, California 94550.

---

## Council Authorizes Enforcement of Prepayment Policy

Don't forget! Any orders placed with MSA for less than \$50 worth of merchandise must be prepaid. This policy is written in the 1985 *Price List* under "Payment Terms."

For convenience, items may be purchased three ways: 1) send check, money order, or credit card (MasterCard, Visa, American Express) number and expiration date to the MSA Business Office along with the order (use the order form in the *Price List*); 2) call the MSA Business Office at (202) 462-6913 during work-day hours and pay with a credit card; or, 3) stop in the Business Office during work-day hours. The Business Office is conveniently located on the new subway system.

---

## Apply Now for 1985 Crystallography Research Grant

MSA will award a \$3500 Crystallography Research Grant in 1986 to an individual involved in research in crystallography. The only requirement is that the applicant be between the ages of 25 and 35 when the award is given (January 1, 1986).

There are no restrictions on how the grant is to be spent as long as it is used in support of the crystallographic research of the recipient. It is not contingent on any other financial support.

The 1986 recipient will be named by the MSA Council based on recommendations from the Research Grant Committee. Six individuals have received the grant since it was begun in 1974. Following Council action in 1984, the amount of the 1986 grant will increase from \$1500 to \$3500 in 1986. This reflects MSA's continued commitment to support the research of promising young scientists.

Applications may be obtained by writing the MSA Business Office, 2000 Florida Avenue N.W., Washington, D.C. 20009. The deadline for submitting completed applications is August 1, 1985.

## Should MSA Go to Camera-Ready Copy?

The costs of producing *The American Mineralogist* continue to rise, prompting a questionnaire to be sent to the membership requesting member opinion on the idea of camera-ready copy for the journal. Response to the questionnaire, included with the July 1984 President's Newsletter, showed strong

support for camera-ready copy if its acceptance meant that dues would not be increased.

Of the 414 respondents, 38 percent said MSA should accept camera-ready copy immediately. Another 45 percent said that the acceptance of camera-ready copy should

be postponed as long as possible, though less than 50 percent of these were willing to pay dues above \$60 to keep the current format. Only 11 percent of the respondents expressed the opinion that MSA should never accept camera-ready copy.

Members were given a choice between accepting camera-ready copy now, postponing as long as possible, or never accepting it. Member were also asked to indicate the greatest amount of dues they were willing to pay. The range began at \$40 and continued to \$90 in \$5 increments. The response indicated that most members were not willing to pay more than \$60 to keep the journal in its present format.

The 1984 Council, in response to the results of this questionnaire, has asked the Publications Committee, chaired by Russell B. Merrill, to develop preliminary specifications for the acceptance of camera-ready copy for *The American Mineralogist*. An initial report will be made at the May meeting of the 1985 Council.

Responses to the second section of the questionnaire, how income from the Endowment Fund should be used in the future, showed member interest in using the money to postpone dues increases and changes in the journal format, as well as support for the Mineralogy/Petrology and Crystallography Research Grant Funds.

## Here's How You Can Participate In the Affairs of Your Society

Members of the Society are urged to take an active part in nominating individuals for Society offices or awards, and volunteering for committee assignments. Some nominations require special forms and/or documentation. All forms can be obtained from, and all nominations submitted to, the Business Office. They should be addressed to: Secretary, Mineralogical Society of

America, 2000 Florida Avenue, N.W., Washington, D.C. 20009. Members are also encouraged to communicate directly with the relevant committee chair.

The Society's three awards do not require MSA membership or American citizenship. Working deadlines are listed below. More information may be obtained by calling the Business Office at (202) 462-6913.

| Award/Office  | Deadline | Committee Chair  |
|---|----------|--|
| <b>Roebing Medal</b> —The highest award given for eminence as represented by outstanding original research in mineralogy. (No Form)   | July 1   | <b>A. J. Naldrett</b><br>Dept. of Geology<br>University of Toronto<br>Toronto M5S 1A1<br>Ontario, Canada |
| <b>Mineralogical Society of America (MSA) Award</b> —Outstanding contribution prior to 35th birthday with 1986 awardee less than 37 on January 1, 1985. (No Form)             | July 1   | <b>Cornelis Klein</b><br>Dept. of Geology<br>University of New Mexico<br>Albuquerque, NM 87131           |
| <b>Krauss Research Grant</b> —\$3500 for research proposal in crystallography from scientist 25-35 years old. (Form required)   | August 1 | <b>Gordon E. Brown</b><br>Dept. of Geology<br>Stanford University<br>Stanford, CA 94305                  |
| <b>Fellowship</b> —Society recognition of a member's significant scientific contributions. Nomination undertaken by one member with two members acting as co-sponsors. (Form) | July 1   | <b>Iris Y. Borg</b><br>P.O. Box 808/L-404<br>Lawrence Livermore National Lab.<br>Livermore, CA 94550     |
| <b>Officers</b> —Any member or fellow of the Society. Two year terms for Secretary and Treasurer; three year terms others.  | July 1   | <b>Donald R. Peacor</b><br>2179 Yorktown<br>Ann Arbor, MI 48105  |
| <b>Committees</b> —Any member or fellow of the Society. Terms normally from one to three years. (No Form)   | July 1   | <b>Paul B. Barton, Jr.</b><br>MS 959, National Center<br>USGS<br>Reston, VA 22092                        |

Names of other committee chairs may be obtained by contacting the MSA Business Office.

## New MSA Directory Due This Spring

The 1985-1988 *Membership Directory* will be printed this Spring. 1984 Council action makes this a three-year directory. The next reprinting will be in 1988. In the past the Directory was reprinted every two years.

Only members paid for 1985 will be included. Plans at this time call for a special mailing to be sent to all paid members for 1985 this month. Members will be requested to correct the spelling of their name, their address (including foreign country code), give home and office telephone numbers, and choose an interest area from the choices offered on the form. The card should be returned to the Business Office by the designated deadline of March 30, 1985.

Members who have not renewed will receive this card with their second dues renewal notice, scheduled to be mailed early this month. The deadline for returning the card to the Business Office, with 1985 dues, is the same—March 30, 1985.

# Members Nominate 22 Students for New Undergraduate Award

5-87  
1-86  
16-85

The American Mineralogist Undergraduate (AMU) Award, MSA's new program to recognize outstanding undergraduate students enrolled in mineralogical courses, got off to a great start. Members nominated 22 of their brightest students to receive the award.

Each student will receive a certificate at an award ceremony and a subscription to *The American Mineralogist* for 1985.

Nominations for the 1986 AMU Award will be accepted through November 1, 1985. In order to be eligible to nominate a student, the sponsoring department must offer one or more courses in crystallography, mineralogy

or petrology, and a member of the permanent (or tenure-track) faculty must be a member or fellow of MSA. A department may sponsor only one student per year. The certificate must be presented during a departmental or university award program.

To nominate a student, a letter of nomination on department letterhead should be sent to the Business Office. Please give the student's full name and departmental address, year in school, interest area, MSA sponsor, and the date and brief description of the award ceremony at which the certificate will be presented. The letter must be signed by the department chair.

Send letters of nomination to the MSA Business Office, 2000 Florida Avenue N.W., Washington, D.C. 20009 by November 1, 1985.

Students nominated in 1985 will receive a subscription to *The American Mineralogist* for 1986. Sponsors will be notified in mid-November; certificates will be mailed on approximately January 1, 1986.

MSA encourages, though does not require, departments to nominate juniors who will be seniors the year that they receive *The American Mineralogist*. Departments should plan on presenting the certificate in the Spring.

Congratulations to the following recipients of the 1984 *American Mineralogist Award* and their sponsors:

## President Designates Committee to Look Into Society's Future

Paul B. Barton, Jr., MSA vice-president, has been appointed chair of the Development Committee. This new ad-hoc committee, designated by President Hans P. Eugster, has been charged with finding ways to insure the long-term health of the Society, both financially and intellectually.

The formation and goals of this committee were discussed in length at the Past President's Breakfast held during the annual meeting in Reno, NV, this past November. Suggested programs that MSA might undertake to expand our role in the field of mineralogy, petrology and crystallography included:

- 1) A Roebling lectureship on the model of AAPG lecturers.
- 2) Research conferences on the model of Penrose conferences.
- 3) Cooperation with other mineralogical societies.
- 4) A membership drive.
- 5) Fund raising for the mineralogy/petrology and crystallography research funds.

Committee recommendations are expected to be presented at the 2nd 1985 Council meeting to be held in Baltimore, MD, May 26. Member suggestions and comments may be addressed to Paul B. Barton, committee chair, Mail Stop 959, National Center, U.S.G.S., Reston, VA 22092.

- 85 Thomas J. Mignery  
Miami University,  
sponsored by John M. Hughes
- 87 E. Kirsten Peters  
Princeton University  
sponsored by Lincoln S.  
Hollister
- 85 John M. Gannon  
University of Iowa,  
sponsored by C. T. Foster
- 85 William H. Babcock  
University of Montana,  
sponsored by John P. Wehrenberg
- 85 Linda Rowan  
University of Illinois,  
sponsored by R. James  
Kirkpatrick and Donald M.  
Henderson
- 85 Bradley Bayne  
University of Nebraska  
at Lincoln,  
sponsored by S. B. Treves
- 85 Reed A. Schwimmer  
Rider College,  
sponsored by Jonathon M. Husch

- 87 Susan E. Dawson  
Clemson University,  
sponsored by Richard D. Warner
- 87 Lee S. Potter  
University of Northern Iowa,  
sponsored by Kenneth J. De Nault
- 87 James Lee  
Queen's University, Kingston  
sponsored by R. C. Peterson
- 87 Brett Waller  
Old Dominion University,  
sponsored by Keith Frye
- 85 Jeffrey J. Roberts  
University of Texas at San  
Antonio,  
sponsored by Robert K. Smith
- 85 Terry L. Spell  
West Georgia College,  
sponsored by Curtis Hollabaugh
- 85 Kevin Roberts  
Central Washington University,  
sponsored by James R. Hinthorne
- 85 Michael L. Foote  
McMurray College,  
sponsored by R. Schofield
- 86 Karen Kinsella  
California State University  
at Long Beach,  
sponsored by Robert E. Winchell  
and Albert L. Ehrreich
- 85 Eric G. Miller  
Stanford University,  
sponsored by John G. Liou
- 85 Karen B. Loomis  
University of California  
at Los Angeles,  
sponsored by W. A. Dollase
- 85 Terry R. Connelly  
Georgia State University,  
sponsored by David A. Vanko
- 85 Nancy E. Gorczyca  
Smith College,  
sponsored by John B. Brady
- 85 Roy W. Schliche  
Rutgers University,  
sponsored by Andreas H.  
Vassiliou
- 87 Kathy Teeter  
University of Akron,  
sponsored by L. M. Friberg and  
R. G. Corbett



# IMA Organizing Committee Announces Themes for 14th General Meeting



Four general themes will be discussed at the 14th General Meeting of the International Mineralogical Association, to be held July 13-18, 1986, on the campus of Stanford University, Stanford, California, U.S.A.

The program will include symposia and plenary lectures organized around the central themes: 1) Geochemistry and Mineralogy of Granites, Pegmatites, and Skarns; 2) Thermodynamics and Kinetics of Minerals; 3) Physics and Chemistry of Mantle Materials; and 4) Environmental and Industrial Mineralogy. (See the box on this page for preliminary symposia topics.) There will also be oral and poster sessions organized according to the subjects of contributed papers and workshops on the Applications of Microcomputers to Mineralogy and Powder Diffraction Analysis. The program is being put together by commissions, working groups, and the program committee.

Pre-meeting field trip locations include: Colorado Rocky Mountain Ore Deposits (A1); New Mexico Pegmatites and Volcanics (A2); Franciscan Blueschist and Eclogite in Northern California (A3); and Alaska (A4). The sites of proposed post-meeting field trips are: Black Hills, South Dakota (B1); New Idria Region, California (B2); Mineral Deposits of the Great Basin (B3); Hawaiian Islands Volcanics (B4); and New England (B5). Additional field trips to California pegmatites and the Mammoth Lakes area are being considered.

In addition to the scientific program, there will be an exhibition of equipment, minerals, and publications. Potential exhibitors should contact the Organizing Committee at the address below.

## Calendar:

|           |                              |
|-----------|------------------------------|
| 1985      |                              |
| September | Second Circular<br>Mail Date |
| 1986      |                              |
| March 1   | Abstract<br>Deadline         |
| April 15  | Preregistration<br>Deadline  |
| May 15    | Third Circular<br>Mail Date  |

The official language of the meeting will be English. All contributions will be published as "extended abstracts" and will be considered as published articles. These will be available at the meeting. There will be no proceedings volume published after the meeting has concluded.

Housing for most members will be in the student residences of Stanford University. Most accommodations will be in rooms for two people; bath and toilet facilities are available on each floor. For those wishing other accommodations, there are many motels and hotels adjacent to the Stanford campus. Complete information on housing will be provided in the Second Circular.

The First Circular, containing details of the field trips, can be obtained by writing to the Organizing Committee. The Second Circular with a call for papers will be sent in September 1985 to everyone who returns the form in the First Circular or who sends a direct request for information to the Organizing Committee in care of the General Chairman, Prof. C. T. Prewitt, at the Organizing Committee's address: IMA 1986, P.O. Box 183, Stony Brook, New York 11790, U.S.A.

## IMA 1986 Meeting Themes and Preliminary Symposia Topics:

### Special Meeting Themes:

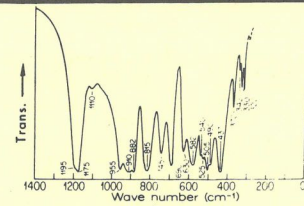
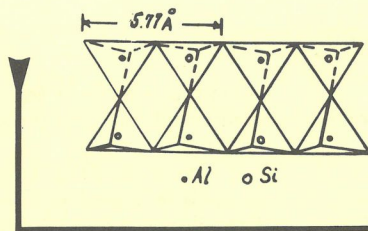
1. Geochemistry and Mineralogy of Granites, Pegmatites, and Skarns (EP, T)
2. Thermodynamics and Kinetics of Minerals (WG, T)
3. Physics and Chemistry of Mantle Materials (T)
4. Environmental and Industrial Mineralogy (T)

### Preliminary Symposia (invited and contributed papers)

1. Nucleation and Crystal Growth in Silicate Systems (C)
2. Description and Genesis of Gem Minerals and Deposits (C)
3. Ore Microscopy I, II, and III (C)
4. Mineralogical Applications of Synchrotron Radiation (OC)
5. Convergent Margin Igneous Activity (OC)
6. Structural Classification of Minerals (C)
7. Garnet Mineralogy: Comprehensive Review (OC)
8. Surface Analytical Methods—Theory and Applications (C)
9. Ordering, Transformations, and Modulated Structures in Phyllosilicates (OC)
10. Non-Crystalline Materials (OC)
11. Optical Properties of Minerals (OC)
12. Structural and Magnetic Phase Transitions of Minerals (C)
13. Electron Microscopy of the Kinetics of Mineral Transformations (C)
14. Metamorphic Petrology (OC)
15. Solid-State NMR (C)
16. Theoretical Mineralogy (OC)
17. Defect Structures in Minerals (C)
18. Advances in Powder Diffraction (J)
19. Cosmic Mineralogy (WG)
20. Pressure-Temperature Paths in Metamorphism (OC)

### Sponsorship:

(T) Conference Theme      (C) IMA Commission      (J) JCPDS  
(WG) IMA Working Group      (OC) Organizing Committee  
(EP) IUGS Commission on Experimental Petrology at High Temperatures and Pressures



## MSA Sponsors Three-Day Spring Short Course

Microscopic-to-Macroscopic: Atomic Environments to Mineral Thermodynamics is the topic of the 1985 Spring Short Course. The meeting is scheduled to begin with dinner on Thursday, May 24 and conclude at noon, Sunday, May 26. These dates are just prior to the AGU Spring meeting.

Topics for the informal, three-day educational program, organized by Alexandra Navrotsky and Susan W. Kieffer, include characterization of atomic sites by various spectroscopic and crystallographic techniques; the relations between atomic vibrational properties and spectroscopic properties; calculation of thermodynamic properties from spectroscopic properties; and, systematics of thermodynamic properties of minerals, including crystal-chemical constraints on free energies; phase transitions; heat capacities and entropies;

solid solution effects; and isotopic fractionation. Speakers will author articles on this information, as well as contribute examples of worked problems, to be published as a volume in the Reviews in Mineralogy series.

The course will consist of three morning lectures, two afternoon or evening lectures, and an evening workshop.

The course will be held at historic Washington College in Chestertown, MD, a short drive from Washington, DC, Philadelphia, PA, and Baltimore, MD. The 10th oldest college in the nation, Washington College offers participants a chance to relax on tree-shaded lawns and dine on delicious seafood from the Chesapeake Bay.

The registration fee for the meeting includes the program, meals, lodging, and transportation from Baltimore-Washington International Airport early Thursday evening. Transportation times will be provided to registered participants at a later date.

An all-day symposium of invited and contributed related research papers will be held at AGU in Baltimore. More information will be forthcoming.

For more information, contact either, but not both, of the co-organizers: Alexandra Navrotsky (Department of Chemistry, Arizona State University, Tempe, AZ 85287) or Susan W. Kieffer (U.S.G.S., Flagstaff, AZ 86001).

### Registration fees:

MSA student members: \$160.00

Other students\*: \$175.00

MSA members: \$270.00

Nonmembers\*: \$305.00

\*includes MSA membership

## MSA Proposes Wones Memorial Symposium at GSA

MSA has requested that its 1985 symposium at the 1985 MSA/GSA meeting in Orlando be entitled, "Quantitative Petrology: Theory, Experiment and Field. A symposium in honor of David R. Wones." Wones, 1979 MSA president, was killed in an auto accident the week before the MSA meeting in Reno this past November.

The half-day symposium will consist of eight half-hour talks on the central theme of state-of-the-art assessments of some of the broad range of petrologic and mineralogic topics that were dominant in Wones' distinguished career.

Several speakers have already agreed to present an abstract for the program, though all are tentative at this time. Co-convenors, Hans P. Eugster and David R. Stewart, will be finalizing the program this Spring.

The date and time of the symposium will be announced in the MSA/GSA meeting registration booklet scheduled to be mailed to all members with the August issue of *The Lattice*. Inquiries prior to that time should be directed to Hans P. Eugster, Dept. of Earth & Planetary Sciences, 301 Olin Hall, Johns Hopkins University, Baltimore, MD 21218; (301) 338-7135.

## Crystallography Topic of Fall Short Course

A short course in crystallography will be presented by M. B. Boisen, Jr., and G. V. Gibbs, October 24-27, 1985, just prior to the MSA/GSA annual meeting in Orlando, Florida.

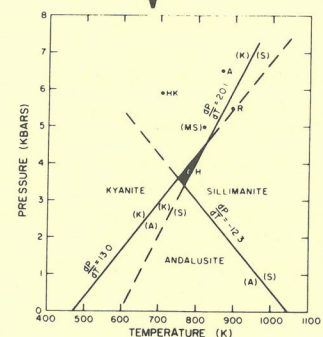
The course will present mathematical development of the point groups and space groups. The three-days of workshops will show how an understanding of the mathematical underpinnings of the subject can be applied to the solution of numerous crystallographic problems. The course will develop those concepts of vector spaces, matrix theory and group theory that are pertinent to crystallographic applications and hence no extensive prior knowledge of these subjects will be assumed. The primary goal of the course will be to show that a rigorous approach based firmly on mathematical principles is easier to understand and apply than the phenomenological approach used in standard mineralogy texts.

The properties of a vector space will be examined and symmetry operations will be defined and their matrix representations

derived, followed by a derivation of the 32 crystallographic point groups. Bravais lattices will be examined and a method of deriving matrix representations for translational isometries will be discussed. The theory of deriving the space groups will be presented and related to crystal structure.

During evening sessions, the plan is to have IBM/PC computers available to undertake crystallographic calculations including the construction of matrices for point groups and space group operations and the calculation of transformation of bases and the geometries of the lattices of crystals.

Because computers will be used, registration is limited to 35 persons. If you are interested in attending, please contact G. V. Gibbs for a registration form: Department of Geological Sciences, 5057 Derring Hall, Virginia Polytechnic Institute and State University, Blacksburg, VA 24061-0796. Information on location and costs will be available in the May newsletter.



# Members Approve New Life Member Category

Members overwhelmingly approved the designation of a new life member category on the 1985 ballot. Fellows and members who have reached the age of 65, retired from active professional employment, and paid annual dues for 30 years shall be exempt from further payment of dues. These members shall retain all rights and privileges of membership, except for *The American Mineralogist*, which will be available at a special reduced subscription rate to be set by Council.

This action is not retroactive. Members or fellows who have achieved life member status prior to December 31, 1984 will continue to receive *The American Mineralogist* at no cost. Members who achieve life member status by paying a lump sum (25 times the annual dues) are not affected by this action. Members or fellows who qualify for life membership on the basis of age and length of membership, according to Business Office records, will be notified of such in the Fall. If they have retired, they will be converted to life

membership and given the option of receiving the journal for \$15, the 1985 rate set by Council.

Life members designated prior to 1985 who do not wish to receive *The American Mineralogist* for whatever reason, should contact the Business Office. The journal

subscription can be stopped without the member losing any of the other member benefits.

A copy of the MSA Bylaws may be obtained by writing the Business Office, 2000 Florida Avenue N.W., Washington, DC 20009.

## Contributions Reach Record Amounts

Contributions mailed with 1985 dues and received by the Business Office in December have topped the 1985 budgeted amounts for all MSA Funds. Thank you!

As of January 18, 1985, \$1688.20 had been contributed to the Mineralogy/Petrology Fund; \$485.80 to the Crystallography Fund; and \$612.20 to the Endowment Fund. A total of 120 contributions were received, making the average contribution less than \$25.

The money contributed to the two research funds will be used to increase the amount of the biennial grants in the future. 1984 Council action increased the size of the grant from its present amount of \$1500 to \$3500 effective in 1986 with the Crystallography Research Grant.

Each small contribution helps increase the overall dollar amount in the research grant funds, as evidenced by the average contribution figure. This in turn enables each fund to support a larger grant.

The contributions to the Endowment Fund will be used to support general programs of the Society.

All contributions are tax-deductible. Send your contribution to the Business Office, 2000 Florida Avenue N.W., Washington, D.C. 20009. Please specify the fund into which you wish your contribution to be added: Mineralogy/Petrology Research Grant Fund, Crystallography Research Grant Fund, Endowment Fund.

## MSA 1985 Calendar

|                  |   |
|------------------|---|
| May<br>23-26     | "Microscopic to Macroscopic: Atomic Environments to Mineral Thermodynamics"<br>MSA Spring Short Course<br>Chestertown (Baltimore), Maryland                   |
| 26               | 2nd 1985 Council Meeting<br>Baltimore, MD   |
| 27-30            | MSA Symposium: Microscopic to Macroscopic: Atomic Environments to Mineral Thermodynamics and MSA Exhibit at AGU Spring Meeting<br>Baltimore, MD               |
| July<br>1        | Deadline for submitting:<br>Nominations for Roebling Medal<br>Nominations for MSA Award<br>Nominations for Fellowship<br>Nominations for office (1986 ballot) |
| August<br>1      | Deadline for applications to be received for the 1986 Crystallography Research Grant  |
| October<br>25-27 | Crystallography<br>MSA Fall Short Course<br>Orlando, Florida  |
| 27               | 3rd 1985 Council Meeting<br>Orlando, Florida  |
| 28-31            | MSA/GSA Annual Meeting<br>Orlando, Florida  |
| 29               | MSA Annual Business Meeting and Luncheon (Tentative)<br>Orlando, Florida  |
| 1986             | 1st 1986 Council Meeting (Tentative)<br>Orlando, Florida  |
| July<br>13-18    | 14th General Meeting of the International Mineralogical Association<br>Stanford University, Stanford, California<br>USA                                       |



## 1985 World Directory Includes MSA Members

Mineralogists from around the world, including MSA members, are listed in the *1985 World Directory of Mineralogists*, recently published by the International Mineralogical Association.

An announcement of the availability of the *Directory* was made in the July 1984 President's Newsletter. Members who returned the pink half-sheet received an order form for the *Directory* in December.

MSA purchased a bulk quantity of the *Directory* February 1, to fill the paid orders received by that date. Shipment is expected sometime in March. A few copies may still be available to interested members.

All attempts will be made to fill your order; unfilled orders will be returned. If you are interested in purchasing the *Directory*, send your check or money order in the amount of \$12, per copy ordered, to the MSA Business Office, 2000 Florida Avenue N.W., Washington, D.C. 20009. You may also purchase the *Directory* with your credit card. Please write your card number and the expiration date on your order. MSA accepts Visa, Mastercard and American Express credit cards. All orders must be prepaid.

## Council

Continued from page 1.

serve as abstractors for *Mineralogical Abstracts*. Interested members should contact K. A. Riggs, American Organizer, P.O. Box Kr, Mississippi St., MS 39762.

In other business, the Council considered establishing and maintaining working relationships with similar societies to work toward mutual goals and programs. MSA maintains contact with the Mineralogical Association of Canada (MAC), as well as the Geological Society of America and the Mineralogical Society of Great Britain, publishers of *Mineralogical Abstracts*.

The American Institute of Professional Geologists addressed the Council on this subject in a letter from its President Dean Grafton. In his letter to the Council, Grafton expressed AIPG's desire to have "a closer working relationship . . . on mutual problems affecting our profession."

Council asked for member ideas on issues and programs that might be addressed jointly by MSA and other societies. If you have suggestions, please address them to "Joint Program," c/o MSA Business Office, 2000 Florida Avenue N.W., Washington, DC 20009.

Several of the MSA committees presented reports to Council for informational purposes. Action taken on these reports is given in other articles in this newsletter.

## From the Editor

### Two Special Issues Planned

*The American Mineralogist* will publish two special issues in the next 12 months. The November/December, 1985 issue will deal with mineralogy and petrology of alkaline igneous rocks and will primarily involve publications growing out of a symposium on alkaline rocks which was held in Wausau, Wisconsin in 1983. The March/April, 1986 issue will be the *Dick Jahns Memorial Issue* and will include papers on the mineralogy and petrology of granitic and pegmatitic rocks. We anticipate that these two issues will add greatly to our offering in the igneous petrology area.

While *The American Mineralogist* has always been internationally known for its mineralogical and crystallographic contributions, it is becoming progressively more important in igneous and metamorphic petrology. Authors are encouraged to submit papers in all these areas. The journal, with a distribution in excess of 4900 worldwide, continues to provide a quality forum for research papers. Our page charges at \$50 are among the most reasonable in the U.S., especially considering the large page size.

I have been working with the MSA Council to shorten publication times. Research papers being submitted at the present time should be published in approximately 10 months. The few papers that take significantly longer to publish usually involve a long time for author revision.

At present, a full four months is required by the publisher. In addition, reviews, revisions, and editing require a minimum of two to four months. I have one or two more ideas to bring before the Council in May on this subject.

Paul Barton is currently heading up the MSA Development Committee that will look into various activities of the Society, including *The American Mineralogist*. If you have constructive suggestions for changes, please send them to me. I will either bring them directly before the Council in May or forward them to Paul. Many believe that we should not tamper with a good thing, but the committee and Council are certainly willing to consider changes that may make the journal more attractive and/or less expensive. I look forward to your comments.

M. J. Holdaway  
Editor

## Do You Know Where These Members Are?

Dues renewal notices for the following individuals have been returned to the Business Office as undeliverable. If your name appears below or if you know the whereabouts of any of these individuals, please contact the MSA Business Office with the correct mailing address. Address changes received after November 15, have been entered into the computer. Regrettably we cannot guarantee that those received prior to that time have been updated because of the recent conversion to a new fulfillment system.

Anthony W. Jones  
Brea, CA

S. Spencer Nye  
Brownsville, TX

Catherine M. Dentan  
Macon, GA

Joseph Berman  
New York, (APO)

Andrew M. Isaacs  
Houston, TX

Robert A. Williams  
Washington, D.C.

Robert H. McCallister  
Columbus, OH

Michael F. Hochella, Jr.  
Corning, NY

Martha L. Sykes  
Arlington, TX

Lawrence M. Anovitz  
Ann Arbor, MI

Robert G. Naum  
Niagara Falls, NY

C. S. Corbett  
Scotch Plains, NY

David Muscale  
Clifton, NJ

Jerome F. Benco  
Oxford, OH

James C. Huntington  
Monroeville, PA

John B. Mertie, Jr.  
Rockville, MD

John W. McKinsty  
Greenville, SC

John W. Groner  
Glendale, CA

# A Message to the Solid-Earth Science Community

The Board on Earth Sciences (BES), formerly the Geological Sciences Board, is an operating arm of the National Research Council (National Academy of Sciences, National Academy of Engineering, and the Institute of Medicine). The BES does not fund research. It is charged with the oversight of the solid-earth sciences, and attempts to assure their health and capacity to address national and societal needs. The board meets twice annually. Members, are drawn from diverse branches of the field; each serves a three-year term on the Board. To fulfill its responsibilities, the BES and its several committees review ongoing scientific and public activities in the earth sciences, identify promising research opportunities, and attempt to establish scientific policy bearing on large earth science programs in and on behalf of the United States.

Committees of the BES report to the Board. Some of these have specific, well-defined charges—e.g., U.S. National Committees which interface with their respective international scientific unions. Others, such as the U.S. geodynamics committee, have broad scientific responsibilities and continue as needed. Still others are more narrowly focussed, ad hoc groups, which cease to exist after completion of their target studies. All such committees are undergoing scrutiny at the present time in an effort to streamline and enhance efficiency, to maintain representative coverage, and to maximize effectiveness of the Board.

The BES is now beginning its fourth year of operation, the previous three under the chairmanship of William R. Dickinson. Major accomplishments thus far include the 1983 National Research Council report "Opportunities for Research in the Geological Sciences," which identified several new and exciting areas for scientific investigation (global seismic network plus portable digital seismic array; deep crustal reflection profiling; global positioning satellite; continental deep drilling; and physics and chemistry of geologic materials). All are interconnected and related to the continental lithosphere program. Studies in progress involve cross-sections of American plate margins, magnetic and gravity maps of the nation and of North America, and continent-ocean geologic transects.

Scientific briefing sessions for key U.S. congressional leaders, Federal funding agencies and the Office of Science and Technology Policy are now being planned. Better coordination between the Board and American solid-earth science professional organizations is also being attempted. The BES is intensifying its efforts to enhance the

vigor and capabilities of the solid-earth sciences in order to better serve the nation. However, the Board can only be effective if it has the recognition and support of the earth science community. This note calls your attention to the BES mission and urges you to contribute to its deliberations through the various professional societies, and/or as individual scientists. We need the advice and

backing of the entire solid-earth science community if we are to work productively for common goals.

Your suggestions and topics for consideration by the Board on Earth Sciences should be sent to W. G. Ernst, Chairman, Board on Earth Sciences, National Research Council, 2101 Constitution Avenue, N.W., Washington, D.C. 20418.

---

## Board on Earth Sciences

Don L. Anderson (1986)  
Seismological Laboratory  
California Institute of  
Technology

Paul A. Bailly (1986)  
Lakewood, CO

Robin Brett (1987)  
Branch of Resource Analysis  
U.S. Geological Survey

Randolph W. Bromery (1987)  
Department of Geology and  
Geography  
University of Massachusetts

Lawrence M. Cathles (1987)  
Chevron Oil Field Research  
Company

W. G. Ernst (1987)  
Department of Earth and  
Space Sciences  
University of California,  
Los Angeles

Melvin J. Hill (1985)  
Gulf Oil Corporation

John Imbrie (1986)  
Department of Geological  
Sciences  
Brown University

V. Rama Murthy (1985)  
Department of Geology  
and Geophysics  
University of Minnesota

Stephen C. Porter (1985)  
Quaternary Research Center  
University of Washington

C. Barry Raleigh (1986)  
Lamont-Doherty Geological  
Observatory

J. William Schopf (1985)  
Department of Earth and  
Space Sciences  
University of California,  
Los Angeles

Michel T. Halbouty (1985)  
Michel T. Halbouty Energy  
Company

Kate H. Hadley (1987)  
Exxon Company, U.S.A.

## Ex-Officio Members

Clarence R. Allen (1985)  
Seismological Laboratory  
California Institute of  
Technology

Donald M. Hunten (1987)  
Department of Planetary  
Sciences  
University of Arizona

## NRC Staff

Joseph W. Berg, Jr.  
Staff Directory

---

## In Memorium

We mourn the passing of the following MSA members and fellows. MSA extends its condolences to the families of these scientists.

Horace R. Blank  
Arthur M. Brant  
George W. Brindley  
Clifton Sherwin Corbett  
Richard H. Jahns  
V. Stephen Papezik  
Frank W. Stead  
Robert W. Webb  
David Wones  
Max Hay  
Hubertus W. V. Willems

---

## 1985 Min/Pet Grant Awarded

Congratulations to Ms. Carol Nabalek, recipient of the 1985 Mineralogy/Petrology Research Grant. Her research project, an extension of a Master's thesis, concentrates on contact metamorphosed amphibolites of the Laramie anorthosite/syenite contact aureole, Morton Pass, Wyoming. Her studies at the University of Missouri, Columbia, will explore the applicability of this thermometer to other terranes.

Ms. Nabalek was chosen as the recipient of the \$1500 award over a field of 32 candidates. This is the largest number of applications ever received for the grant, instituted in 1981 and awarded in odd-numbered years since then. To be considered for the award, applicants must be between the ages of 20 and 30; there are no restrictions on how the money is to be spent, as long as it is spent in support of research.

# Welcome New Members

The following members and students have joined MSA effective January 1, 1985. Welcome!

Applications for membership may be obtained from the Business Office, 2000 Florida Avenue N.W., Washington, D.C. 20009.

## Members:

**T. J. White**  
Brisbane, Australia  
Sponsors: P. Buseck, R. Neder

**Alberto Vaquero**  
Barcelona, Spain  
Sponsor: MSA

**Tadeo Yishiyama**  
Fukuoka, Japan  
Sponsors: M. Yamaguchi and Y. Nakamura

**Ellen W. Faller**  
New Haven, CT  
Sponsors: H. Winchell and H.C.W. Skinner

**John M. Neil**  
Sacramento, CA  
Sponsors: A. Navrotsky and P.B. Moore

**Paul C. Hess**  
Providence, RI  
Sponsors: M.J. Rutherford and R.A. Yund

**Aliyah W.M. von Nussbaumer**  
Houston, TX  
Sponsor: J.K. Bannerman

**Eileen McEllan**  
College Park, MD  
Sponsor: MSA

**Jonathan G. Price**  
Austin, TX  
Sponsor: MSA

**Albert M. Kudo**  
Albuquerque, NM  
Sponsor: MSA

**John W. Gabelman**  
Danville, CA  
Sponsor: W.J. Olszewski, Jr.

**Asish R. Basu**  
Rochester, NY  
Sponsor: MSA

**Werner H. Joswig**  
Friedrichsdorf  
West Germany  
Sponsors: Y. Takeuchi and S.W. Bailey

**Edwin S. Butler**  
Houston, TX  
Sponsor: MSA

**Richard J. Williams**  
Houston, TX  
Sponsor: Stephen Barnes and Gary Lofgren

**Daniel M. Gottlieb**  
College Park, MD  
Sponsor: MSA

**Juliet C. Reed**  
Wayne, PA  
Sponsor: William A. Crawford and Maria-Luisa Crawford

## Student Members:

**Brian L. Phillips**  
Urbana, IL  
Sponsors: C.A. Weiss, Jr. and R.J. Kirkpatrick

**James T. Wells**  
Seattle, WA  
Sponsors: H.E. O'Brien and M. Ghiorso

**Rebecca A. Lange**  
Berkeley, CA  
Sponsor: MSA

**Alberta L. Settle**  
Rapid City, SD  
Sponsor: MSA

**Sandra Drake**  
Golden, CO  
Sponsor: M.J. Holdaway and H.O.A. Meyer

**Katherine A. Connors**  
Golden, CO  
Sponsor: MSA

**Eric Seedorff**  
Sunnyvale, CA  
Sponsor: MSA

**Alexander M. Nitkiewicz**  
University Park, PA  
Sponsor: MSA

**Aime Pamela Ruendal**  
Eugene, OR  
Sponsor: MSA

**Robert S. Borch**  
Davis, CA  
Sponsor: MSA

**David R. Turner**  
Salt Lake City, UT  
Sponsors: H.O.A. Meyer and M.J. Holdaway

**George Albino**  
London, Ontario  
Sponsor: M.A. Dungan and M.J. Holdaway

**Robert L. Badger**  
Blacksburg, VA  
Sponsors: M.L. Miller and P.H. Ribbe

**Heather Trim**  
Los Angeles, CA  
Sponsors: M. Ross and H.C.W. Skinner

**J. Michael Pollock**  
Portland, OR  
Sponsor: H.P. Eugster

**John Mackinney**  
Madison, WI  
Sponsor: MSA

**Lydia K. Fox**  
Santa Barbara, CA  
Sponsor: MSA

**Rachel Cowan**  
Albuquerque, NM  
Sponsors: C. Klein and R. C. Ewing

**Christopher Lapallo**  
Blacksburg, VA  
Sponsors: C.G. Lindsay and P.H. Ribbe

**Thomas Skulski**  
Outremont, Quebec  
Sponsors: J.S. Stevenson and R.F. Martin

**Jong-Sim Park**  
Madison, WI  
Sponsor: W. Lamb

**Henry Jones**  
Ames, IA  
Sponsors: K.E. Windom and S.M. Richardson

**Ronald W. Sheets**  
Columbus, OH  
Sponsors: J.W. Downs and R. Tettenhorst

**Sabine Wegge**  
Bochum, West Germany  
Sponsors: N. Chatterjee and I. Wurmbach

**Leonard E. Chackowsky**  
Winnipeg, Manitoba  
Sponsors: N.M. Halden and G.S. Clark

**Jeffi Radloff Basham**  
Houston, TX  
Sponsor: M.F. Carman, Jr.

**Robert A. Dover**  
Chapel Hill, NC  
Sponsor: MSA

**D.V. Chitale**  
Lubbock, TX  
Sponsors: N. Guven and C.G. Barnes

**David J. Balazs**  
Oxford, OH  
Sponsors: J.M. Hughes and D.M. Scotford

**C. Leigh Broadhurst**  
Tucson, AZ  
Sponsors: J. Ruiz and J.W. Anthony

**Shi-Jer Lin**  
Minneapolis, MN  
Sponsors: James H. Stout and Tibot Zoltai

**Armando Maiorani**  
Rome, Italy  
Sponsors: Giorgio Graziani and Sergio Lucchesi

**Rosemary Capo**  
Los Angeles, CA  
Sponsor: A. L. Boettcher

\*MSA sponsor: Henry O.A. Meyer, elected Secretary of MSA

17  
23  
40  
17 mem  
33 sta  
43  
76

## Record Number Renew Membership in December; All Receive Journal

Many members thought they had been lost from our records when they did not receive their dues renewal notices in October, but such was not the case. Instead, the Business Office was using the extra weeks to make sure that everyone was included in the new fulfillment system before renewal notices were mailed in mid-November.

The result of the late mailing was a record-breaking number of renewals returned during the month of December. The first 30 days following the mailing of the notices saw 50 percent of the membership and 60 percent of the subscribers pay for 1985. Despite the volume of renewals, everyone who has paid as of January 31, has been updated and will receive their first issue of *The American Mineralogist* on time.

Please note that new identification numbers have been assigned to all members. This nine-digit identification number replaces the previous number which was comprised of 4 letters and 6 digits. Please use this new 9-digit number when contacting the

Business Office. If you did not record your new number, a staff member will be happy to give it to you the next time you call or write.

### *Mineralogical Abstract Indexes Due This Fall*

The 1983 and 1984 Indexes for *Mineralogical Abstracts* are in progress according to Miss Jean Anderson, executive secretary of the Mineralogical Society of Great Britain, publishers of the journal. The expected publication date is late summer. Subscribers to *Mineralogical Abstracts* for 1983 and 1984 will receive these indexes immediately upon publication.

1985 subscribers to *Mineralogical Abstracts* should find service much improved. The MSA Business Office has taken steps to verify 1985 subscribers with the publisher. This will improve service and help insure that all subscribers to the journal receive timely service.

## MSA Welcomes Second Fulltime Staff Member in Business Office

Ms. Mona Tennyson has joined the fulltime staff at the MSA Business Office as the fulfillment specialist. Her time and efforts are directed toward subscriptions and book orders, though she will also be happy to assist you with address changes and claims. Since joining the MSA staff in October, Mona has had her hands full entering 1985 dues payments and subscriptions into the new fulfillment system. At the time this newsletter goes to print, all members and subscribers who have paid for 1985 are entered and current. All address changes and special requests received after November 15 have also been made.

This means that everyone who paid early will enjoy the benefit of receiving their first issue of *The American Mineralogist* for 1985 on time and at the correct address.

If you have a question, need to change your address, or make a claim, please ask for Mona when you contact the MSA Business Office.

## The Lattice

Volume 1, Number 1  
February, 1985

The Mineralogical Society of America  
2000 Florida Avenue N.W.  
Washington, D.C. 20009  
U.S.A.

Bulk Rate  
U.S. Postage  
Paid  
Washington,  
D.C.  
Permit No. 515