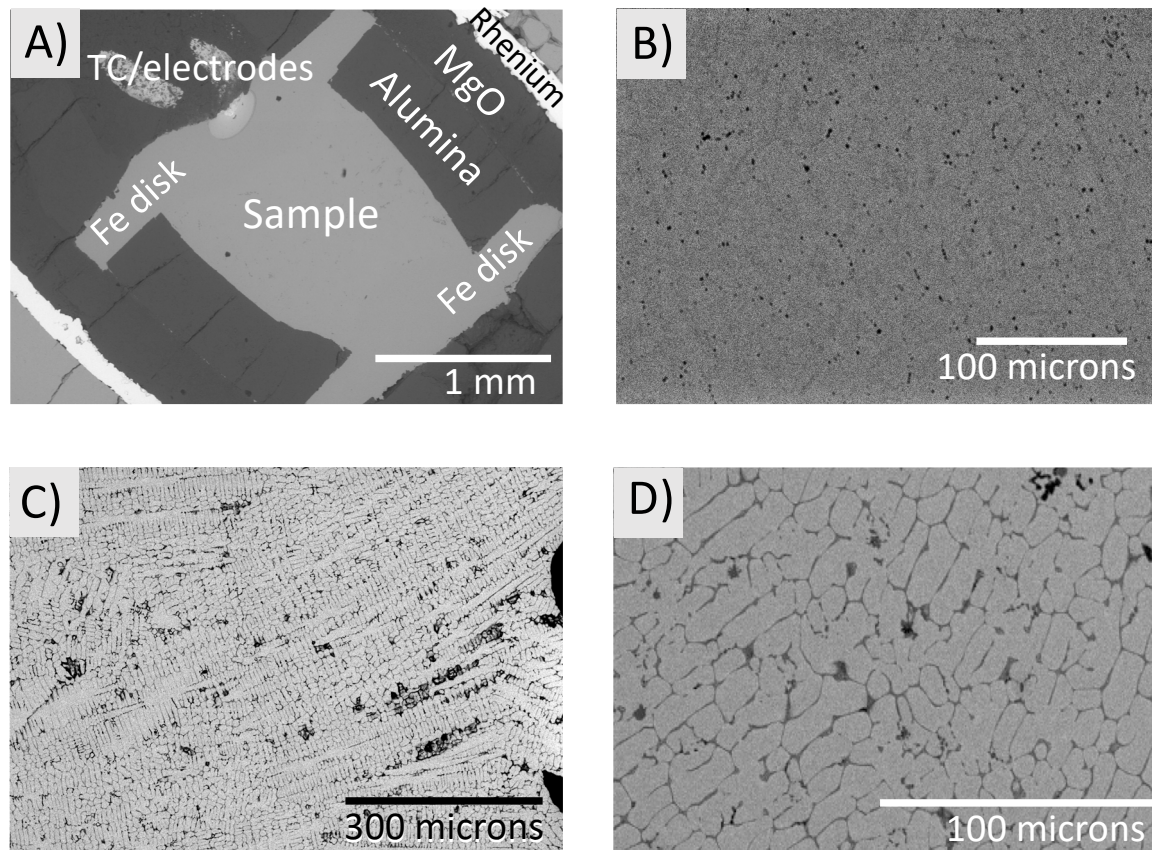


Supplementary Figure 1



Supplemental Figure 1: Backscattered SEM images of molten samples recovered after electrical experiments. A) Whole electrical cell containing a recovered Fe-10Ni sample. B) Fe-5Ni sample at 4.5 GPa quenched at 1894 K. C) Fe-5Ni-3S at 4.5 GPa quenched at 1844 K. D) Fe-5Ni-3S at 8 GPa quenched at 1903 K. The darker region corresponds to the S-rich quenched melt.