

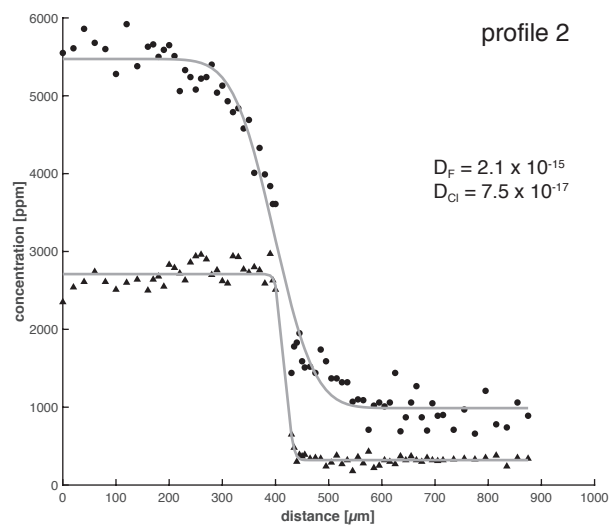
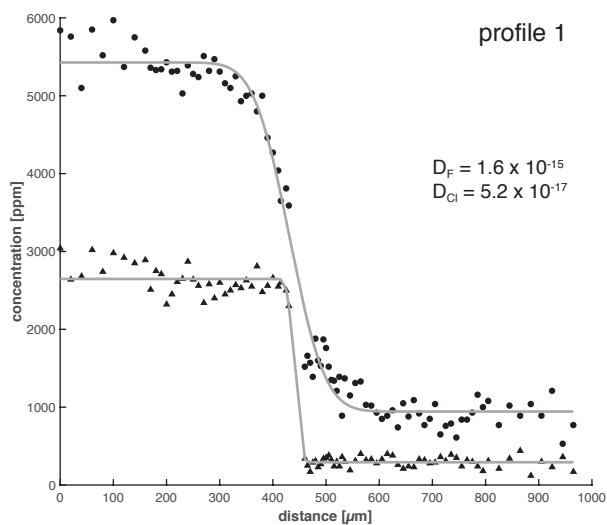
## Supplementary Material

### S1. Diffusion profiles and respective fits of all analyzed samples (p.1/3)

**HX6**

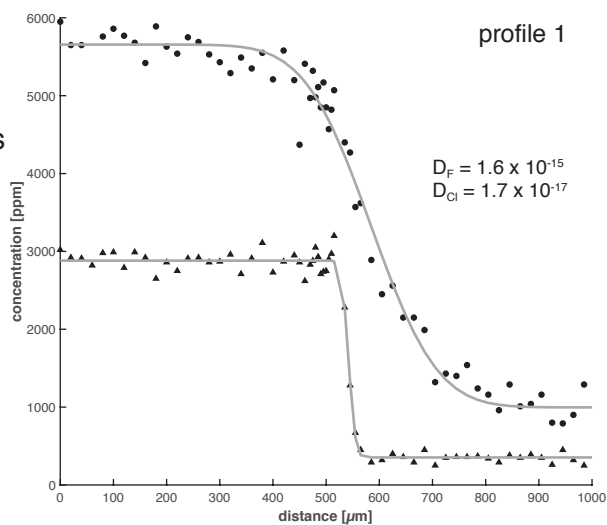
750 °C  
851880 s

● Fluorine  
▲ Chlorine



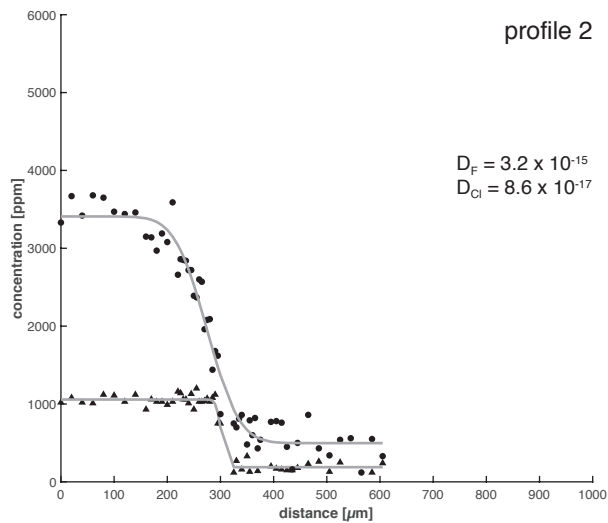
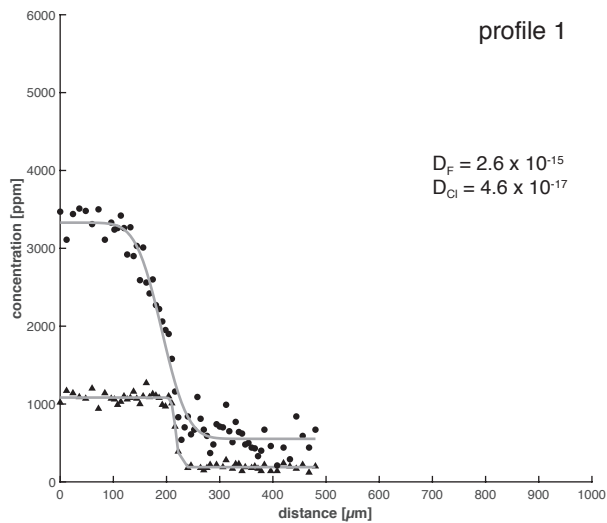
**HX9**

750 °C  
3023535 s



**HX4**

800 °C  
359334 s



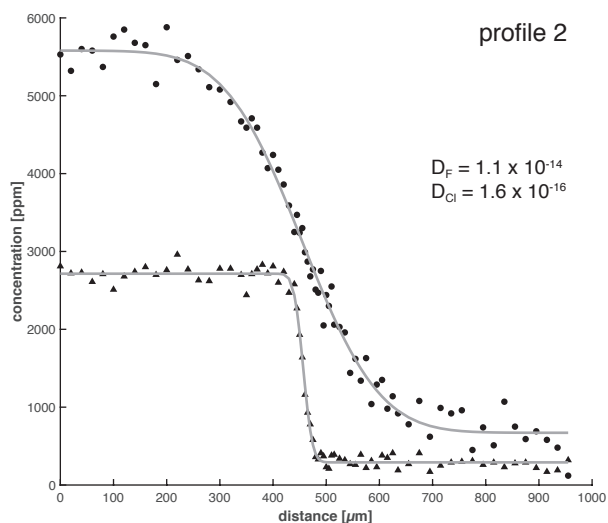
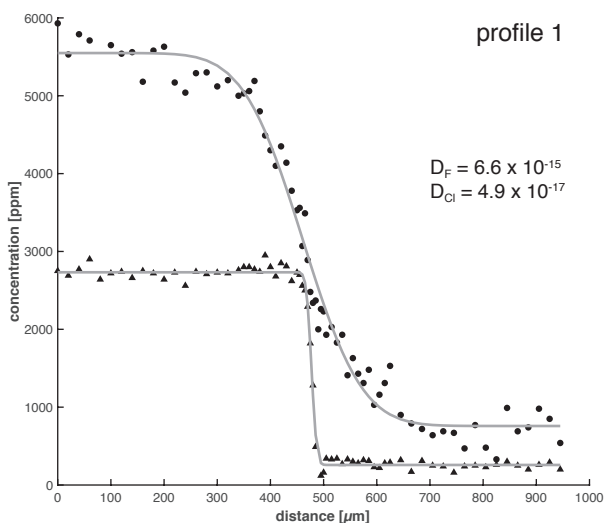


## S1. Diffusion profiles and respective fits of all analyzed samples (p.2/3)

**HX7**

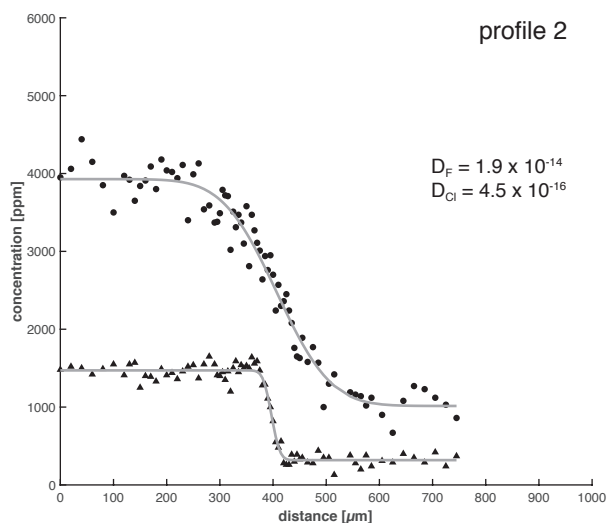
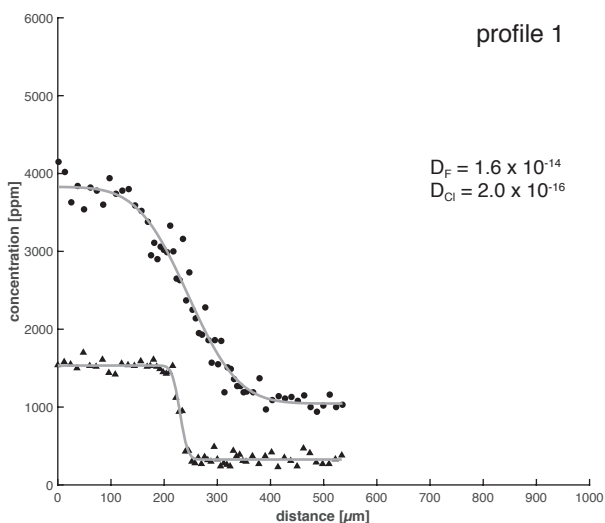
800 °C  
 587235 s

● Fluorine  
 ▲ Chlorine



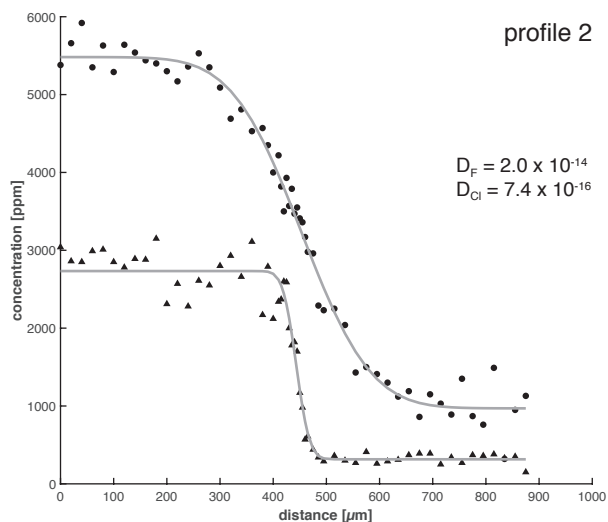
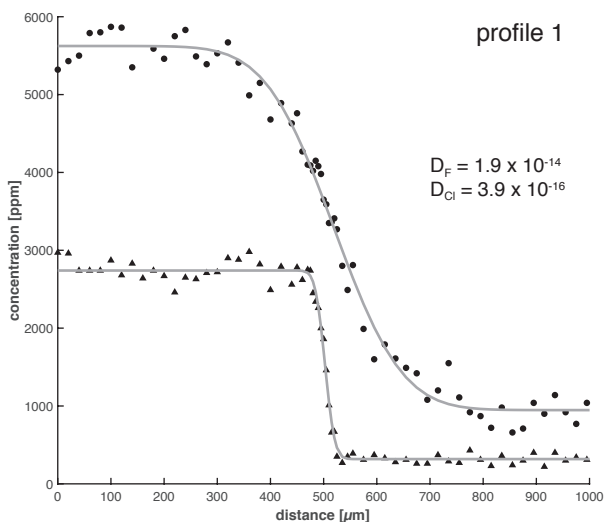
**HX3**

850 °C  
 171502 s



**HX10**

850 °C  
 266855 s



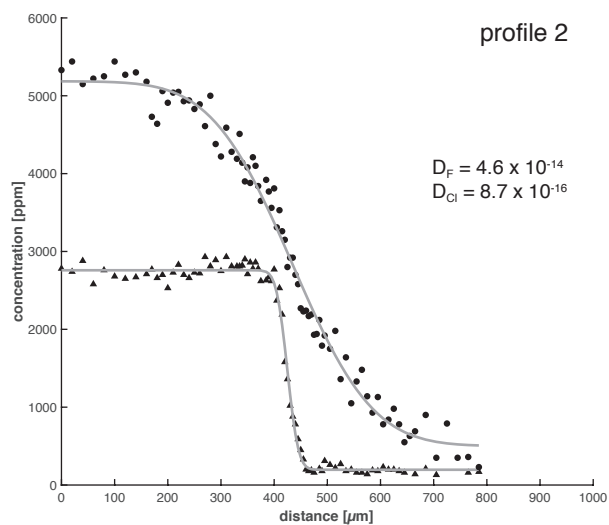
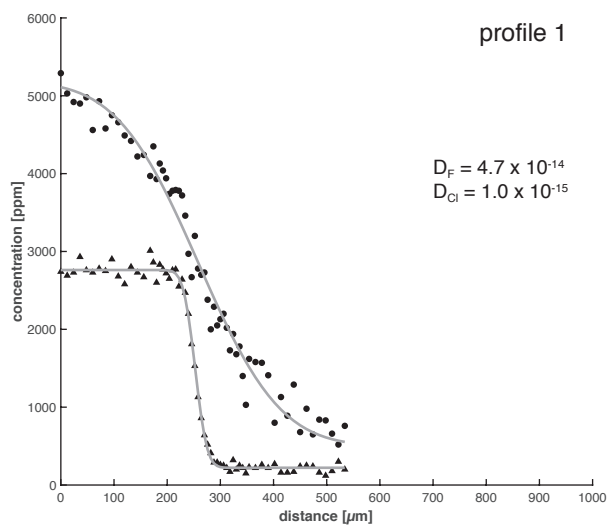


## S1. Diffusion profiles and respective fits of all analyzed samples (p.3/3)

**HX5**

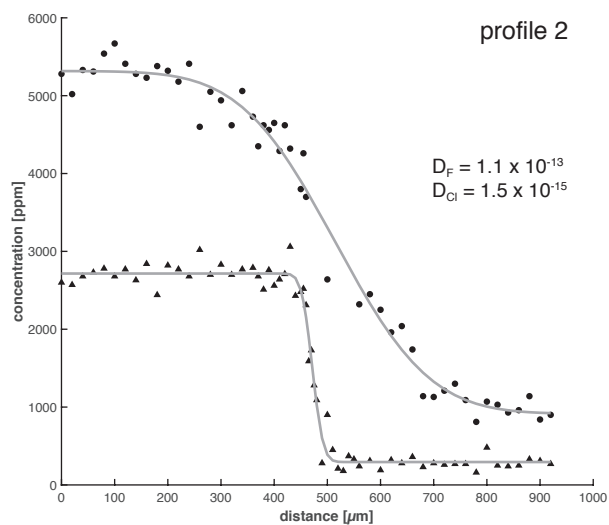
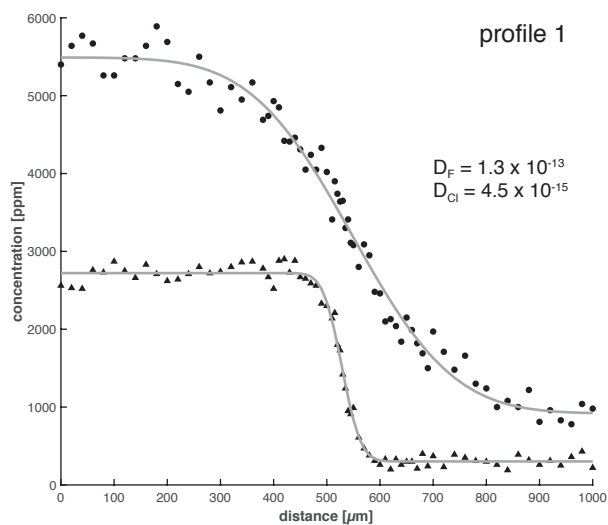
900 °C  
 154560 s

● Fluorine  
 ▲ Chlorine



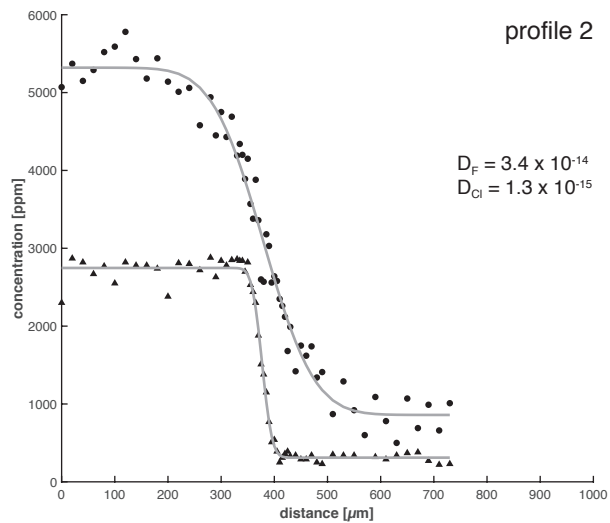
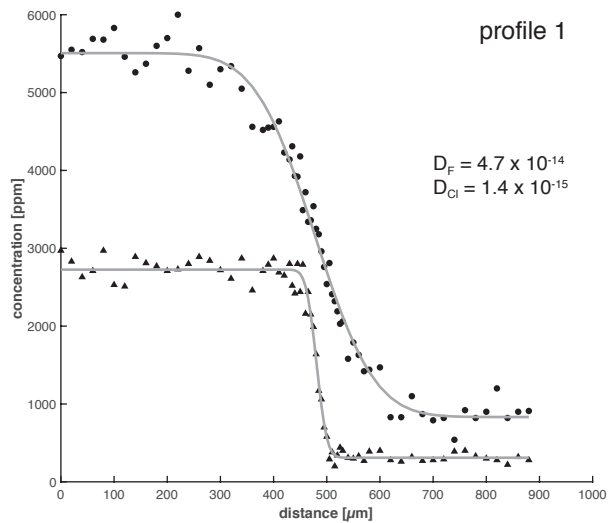
**HX8**

950 °C  
 87025 s



**HX2b**

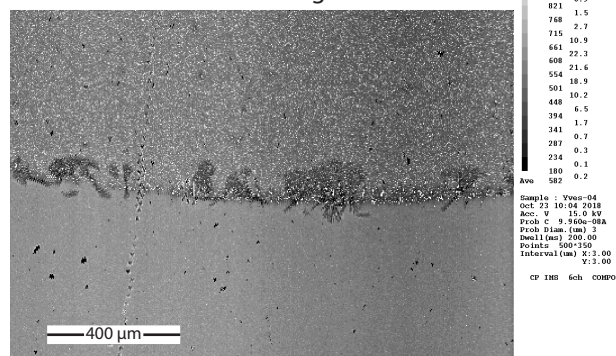
900 °C  
 83400 s  
 100 MPa



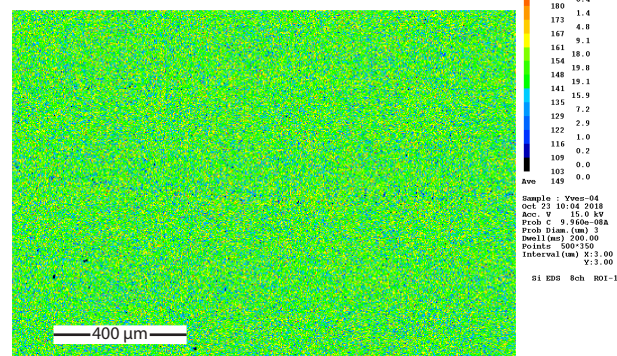


## S2. Compositional map of sample HX8 (950 °C)

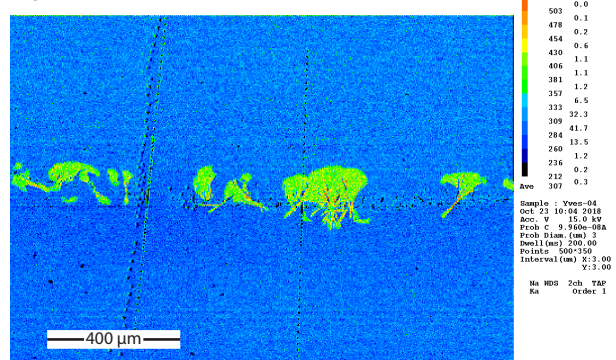
backscattered electron image



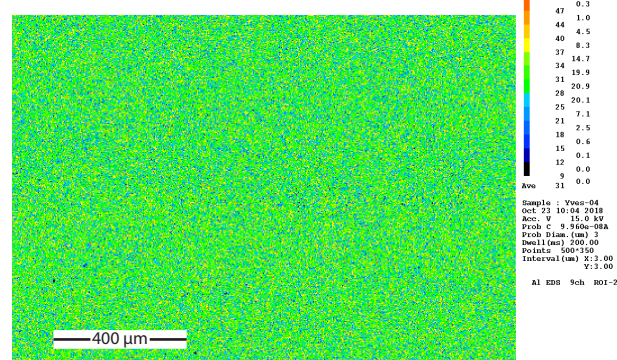
Si



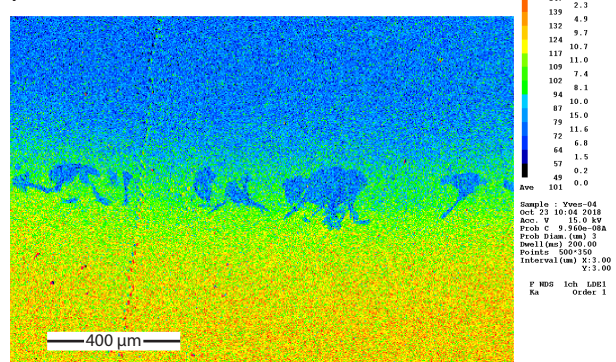
Na



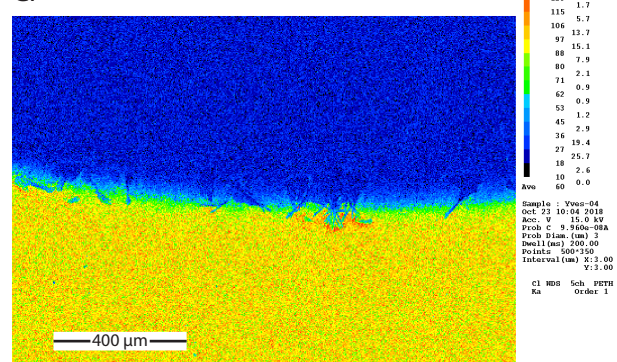
Al



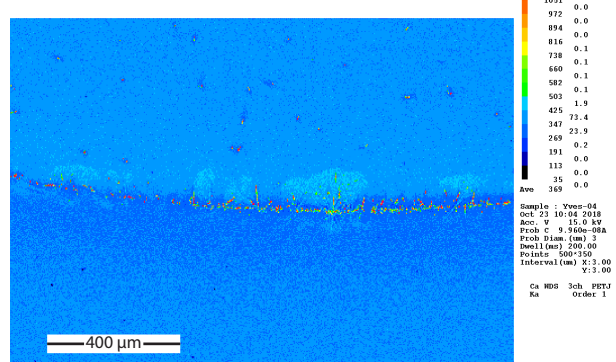
F



Cl



Ca



Ti

