

* *ERRATA* *

Corrections to Reviews in Mineralogy Volume 26 - Contact Metamorphism
Chapter 4 "Phase Equilibria and Thermobarometry of Metapelites", pages 105-206

D. R. M. Pattison and R. J. Tracy

Text Corrections

1. (p. 129, middle): "The highest-grade reactions include fluid-*conserving* dehydration melting reactions."
2. (p. 136, reaction [1]): "Ms + *Chl* + Qtz = And + Crd + Bt + H₂O"
3. (p. 136, reaction [6]): "Bt + *Sil* + Qtz = Crd + Grt + Kfs + melt"
4. (p. 142, reaction [3]): "Ms + Chl + *Grt* + Qtz = St + Bt + H₂O"
5. (p. 146, bottom): "...allow testing *of* the calibration of the low-pressure metapelitic..."
6. (p. 148, reaction [37]): "*Ms* = Crn + Kfs + H₂O"
7. (p. 154, first paragraph): "(Types 1a - 2a)"
8. (p. 155, last paragraph): Omit "the" from the following phrase: "...st-crd-ms, it may be that *the* these assemblages were stabilized by minor components."
9. (p. 160, second full paragraph): Replace "Ky,Sil" with "*Ky/Sil*"
10. (p. 167, last line): "...*andalusite*..."
11. (p. 169, second line): "...*assemblages*..."
12. (p. 182, second line): Add "(18)" after the reaction "Bt + Al₂SiO₅ + Qtz = Crd + Kfs + H₂O."

Figure Caption Corrections

1. Fig. 35. Insert "above" into the expression "...,accounting for the *above* topology of divariant..."
2. Fig 35. Add at the end of the caption: "The majority of natural data support the topology in Fig. 36."
3. Fig. 53. Add "("" to "ms-qtz-and(sil)-kfs-crd-bt."

Figure Corrections

Fig. 33. Replace with the enclosed *new* Figure 33.

Fig. 47. Replace with the enclosed *new* Figure 47.

Fig. 48. Replace with the enclosed *new* Figure 48.

Table Corrections

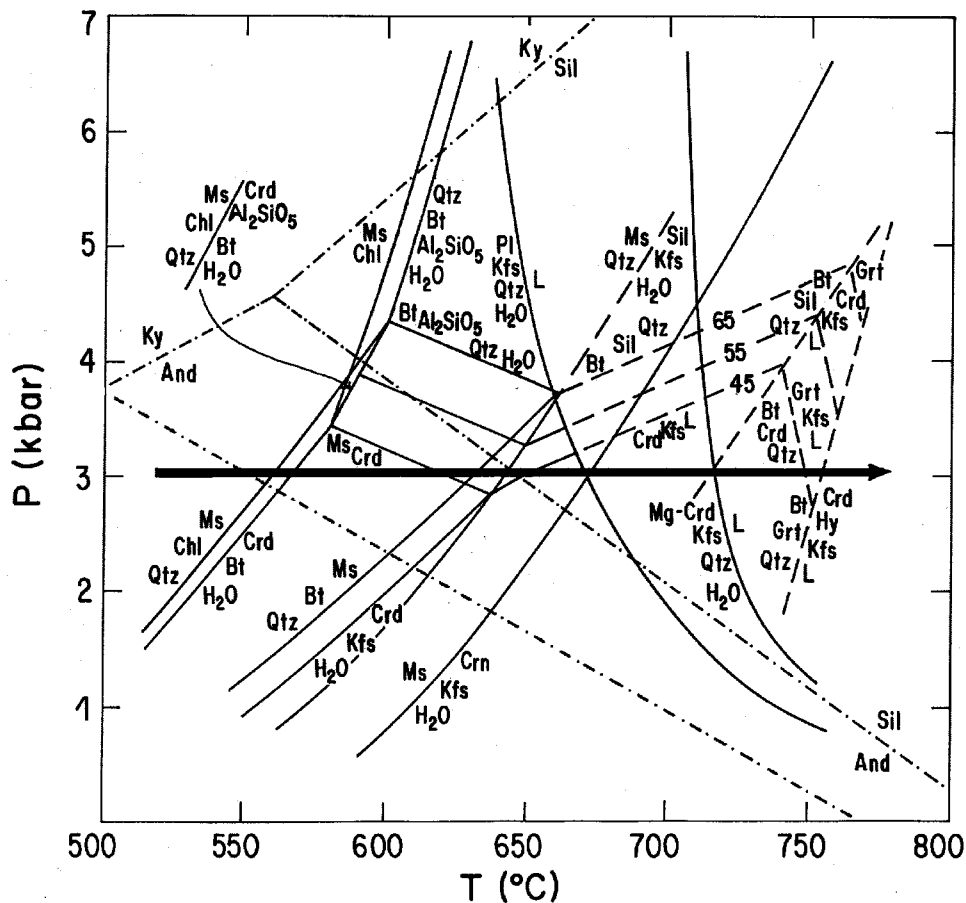
Table 3 (p. 118):

Phases always present: Bt + Qtz + (V or L) present in all assemblages
 Kfs present in all assemblages upgrade of reaction 5
 Ms present in all assemblages downgrade of reaction 5

Exclusions: Chl+Kfs, St+Kfs, Ms+Crd+St, Crd+Grt+Ms, **Ms+Chl+Grt+Al₂SiO₅**, Hy+Chl, Hy+Ms, Hy+Al₂SiO₅, Hy+St

Table Corrections

Corrected Figure 47



Corrected Figure 48

