

LETTER

Isotopic signature of core-derived SiO₂[‡]

GEORGE HELFFRICH^{1,*}, ANAT SHAHAR², AND KEI HIROSE^{1,3}

¹Earth-Life Science Institute, Tokyo Institute of Technology, 2-12-1 Ookayama 17E-312, Meguro-ku, Tokyo 152-8550, Japan

²Geophysical Laboratory, Carnegie Institution for Science, 5251 Broad Branch Road NW, Washington D.C. 20015, U.S.A.

³Department of Earth and Planetary Science, The University of Tokyo, 7-3-1 Hongo, Bunkyo-ku, Tokyo 113-0033 Japan

ABSTRACT

We apply an experimentally based thermodynamic model of Si+O saturation for the core to determine the saturation level of these elements under the conditions when the core formed. The model limits the bulk Si content of the core to between 0.4 and 3.1 wt% depending on the pressure, temperature, and oxygen content of the metal when it segregated from silicate. With knowledge of the core's Si content, the measured ³⁰Si content of the silicate Earth, and the experimentally determined metal-silicate fractionation factor, we can calculate the core's $\delta^{30}\text{Si}$, which is between -0.92 to -1.36‰ . SiO₂ cycled through the core and then released into the mantle might be trapped in inclusions in diamond formed in the lower mantle. These would be characterized by significantly lighter $\delta^{30}\text{Si}$ values of $-1.12 \pm 0.13\text{‰}$ (1σ), compared to bulk silicate earth values of -0.29‰ and a potentially key indicator of mass transfer from the core to the mantle.

Keywords: Si, core, SiO₂, core-mantle interaction

INTRODUCTION

The Earth formed through a relatively rapid process during which approximately chondritic materials aggregated as a discrete body from the protoplanetary disk and differentiated into a metallic core and a silicate crust and mantle (Wood et al. 2006). During the melting arising from the accretion process (from impact energy, heat production from short-lived radionuclides, gravitational potential energy release from differentiation), either a planetary-scale magma ocean or spatially restricted magma lakes arose, imparting a relatively low-pressure differentiation signal [compared to the pressures of either the core-mantle boundary (CMB) or the planet's center] on the moderately siderophile elements (Li and Agee 1996; Wade and Wood 2005; Siebert et al. 2011, 2013; Fischer et al. 2015).

Concurrent with siderophile element partitioning, some major elements also entered the metal destined for the core: Si, O, and Mg are potential candidates (O'Neill et al. 1998; O'Rourke and Stevenson 2016; Badro et al. 2016; Hirose et al. 2017). In particular, some Si is believed to reside in the core because the Mg/Si and Al/Si ratios in the bulk silicate Earth are higher than chondritic values (Palme and O'Neill 2003). Based on high-pressure experiments at CMB conditions, Hirose et al. (2017) developed a model for SiO₂ saturation in core metal that allows the amount of Si+O potentially ingested by the core during accretion to be assessed. The Si+O is subsequently expelled back into the mantle as SiO₂ as the core cools. Escape of SiO₂ from the core is virtually certain due to its low density relative to silicate at the CMB (Hirose et al. 2017). This cycling through the core imprints core-derived Si with the metal-silicate stable isotope fractionation prevailing at the conditions of differentiation

(Georg et al. 2007; Shahar et al. 2011) rather than bulk silicate Earth values and potentially provides a way to identify SiO₂ previously hosted by the core. The core's estimated Si content is based on a new, experimentally based set of constraints not previously exploited, to our knowledge, for making a metal-silicate isotope balance. We explore core-hosted SiO₂ isotopic signatures here; the physical mechanism for expelling SiO₂ from the core is described separately (Helffrich et al. 2018).

METHODS

We use Hirose et al.'s (2017) Si+O solubility model to determine joint Si+O solubility at various pressure (P) and temperature (T) conditions during the course of core formation and cooling. The conditions of core formation are set using a single-stage core formation model to approximate the range of pressures and temperatures encountered during accretion. The conditions are set as fractions of the CMB pressure, leading to a P range of 30–55 GPa [see Rubie et al. (2011) for one reckoning of the range]. From P , the associated T is obtained from two different equations for the peridotite liquidus and solidus, $T(P)$ (Wade and Wood 2005; Fiquet et al. 2010), respectively. Figure 1 shows a suite of saturation curves at various core formation pressures, calculated by evaluating the joint Si-O saturation expressions at the P and corresponding T on a grid and contouring (Hirose et al. 2017).

The method we use to estimate Earth's core's Si content is new, and based on joint Si+O solubilities in core metal, the constitution of the Earth's core, and the high-pressure behavior of the eutectic compositions of Fe-Si and Fe-FeO. In particular, Hirose et al. (2017) note that the Earth's inner core requires that it crystallize essentially pure Fe, which restricts the core liquid composition to the intersection of the SiO₂ saturation contour and the compositional triangle bounded by SiO₂, the Fe-Si eutectic, and the Fe-FeO eutectic (Fig. 1). The Fe-FeO eutectic moves to higher O content with increasing pressure (Komabayashi 2014; Morard et al. 2017), but the asymptotic behavior of the SiO₂ solubility contours with increasing O do not strongly affect the lower bound for Si. In contrast, Fe-Si's eutectic moves Fe-ward at high pressure (Fischer et al. 2013; Ozawa et al. 2016). At the pressure of the Earth's CMB, Fischer et al. (2013) placed the eutectic at 5–12 wt% Si, and various estimates of the maximum core Si content by Hin et al. (2014) and Dauphas et al. (2015) placed it at 6–8 and 0–9 wt%, respectively. However, the study by Ozawa et al. (2016) of the eutectic dependence on pressure narrowed the bound considerably to 1.5 wt%, which we use to define the Fe-Si eutectic in the O-free system. Figure 1 depicts the bounds constraining core Si.

A Si isotope balance of the Earth (subscript BE) may be written in terms of its

* E-mail: george@elsi.jp

‡ Open access: Article available to all readers online. This article is CCBYNCND.

partitioning between the core's metal (subscript C) and the mantle and lithosphere's silicate (subscript BSE)

$$\delta^{30}\text{Si}_{BE} = f_c \delta^{30}\text{Si}_c + (1 - f_c) \delta^{30}\text{Si}_{BSE} \quad (1)$$

f_c is the mass fraction of Si in the core to the Si in the entire Earth. We use a pyrolitic model for the silicate Earth (McDonough and Sun 1995) to obtain its Si content (21 wt%) and the Si+O solubility model to determine the core Si content. To account for the silicate-metal partitioning during core formation, we use Shahar et al.'s (2011) temperature-dependent fractionation factor $\Delta^{30}\text{Si}(T) = -7.45(\pm 0.41) \times 10^6/T^2$. Hence,

$$\delta^{30}\text{Si}_c = \Delta^{30}\text{Si}(T) + \delta^{30}\text{Si}_{BSE} \quad (2)$$

$\delta^{30}\text{Si}_{BSE}$ is $-0.29 \pm 0.02\text{‰}$ (Fitoussi et al. 2009), and the P - T conditions of core formation sets the fractionation factor and f_c from the Si+O saturation model. From Equations 1 and 2 and these values, $\delta^{30}\text{Si}_{BSE}$ may be calculated.

We use a single-stage core formation model, but more elaborate methods that track the evolution of the mantle's ³⁰Si content through the accretion process are also possible (Zambardi et al. 2013; Hin et al. 2014). We know experimentally that Si partitioning between metal and silicate is not pressure dependent (Fischer et al. 2015; Hirose et al. 2017) so the core's Si content is fairly constant during accretion (Tuff et al. 2011), yielding little difference between multi-stage core formation models and single-stage. Hin et al. (2014) showed that the difference between $\delta^{30}\text{Si}_{BE}$ and $\delta^{30}\text{Si}_{BSE}$ during their accretion histories is never more than 0.3‰. The signal that we predict is 3–4 times larger than this, justifying, post hoc, the use of the single-stage model for obtaining $\delta^{30}\text{Si}_c$.

Xu et al. (2017) investigated Si diffusion in stishovite and provided an expression for the pressure- and temperature-dependent Si diffusion coefficient. Using lower mantle pressure and temperature range of 20 GPa, 2000 K to 135 GPa, 4000 K [see, e.g., Helffrich (2017)], leads to Si diffusion times over 1 mm distances of at least 300 Myr to 620 Gyr (due, in part, to the diffusion coefficient's strong pressure dependence). Assuming that CaCl₂-structure SiO₂, the SiO₂ polymorph stable at higher pressures than stishovite, behaves similarly, Si isotopic disequilibrium may be maintained over the times required for detection in diamond inclusions.

RESULTS

Limits on the uptake of Si by the core may be obtained from Figure 1. The present properties of the Earth's core (Hirose et al. 2017), the shape of the saturation contours, and the positions of the Fe-FeO eutectic ($E_{\text{Fe-FeO}}$) and the Fe-Si eutectic ($E_{\text{Fe-Si}}$) control the core's Si content. While the asymptotic nature of the relation at low Si renders the estimate insensitive to $E_{\text{Fe-FeO}}$, $E_{\text{Fe-Si}}$, and the slope of the SiO₂ loss line define the upper limit of Si saturation. The intersection of the SiO₂ loss line with the saturation contours therefore provides the 3.1 wt% upper bound that we use. These limits set core Si content to be 0.4–3.1 wt%. In turn, the limits place f_c in the range $0.91\% \leq f_c \leq 6.62\%$. By Equation 1, the core mass fractions lead to a $\delta^{30}\text{Si}$ fractionation range of $-0.37 \leq \delta^{30}\text{Si}_{BE} \leq -0.30\text{‰}$. Alternative coefficients for $\Delta(T)$ (Hin et al. 2014; Ziegler et al. 2010) lead to $-0.33 \leq \delta^{30}\text{Si}_{BE} \leq -0.29\text{‰}$. When compared with the values for bulk silicate Earth -0.29 ± 0.02 , we find that the ranges largely overlap. This has implications for the Earth's source materials and formation conditions (Zambardi et al. 2013; Hin et al. 2014; Dauphas et al. 2015), but we do not discuss them here.

DISCUSSION

Figure 2 shows the ³⁰Si fractionation predicted by the Si+O saturation model. The uncertainties include the effective pressure of segregation, alternative temperatures of segregation, and the range of permissible O content of the core, which also affects Si saturation. It is assumed in these calculations that there

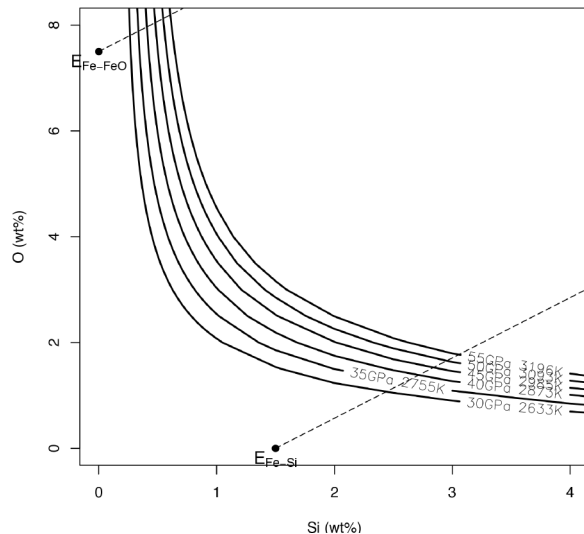


FIGURE 1. Saturation of Si and O in metallic iron at a range of pressures corresponding to core formation. Labels on each saturation line are P and T of formation; $T(P)$ from Fiquet et al. (2010). The Si uptake depends on the O content, and hence yields a range for the mass of Si carried to the core in metal. Quasi-diagonal lines show the SiO₂ loss trend; for inner core properties like Earth's, feasible Si+O contents must be more O-rich than the Fe-Si eutectic (lower line) and less O-rich than the Fe-FeO eutectic (upper line). This limits core Si content to be 0.4–3.1 wt%.

is no pressure-dependent silicon isotope fractionation (Shahar et al. 2016) at the temperatures associated with core formation.

Depending on the pressure and the solidus temperature model chosen, the Si isotope composition of the core is $-1.12 \pm 0.13\text{‰}$ (1σ), significantly different from the BSE value of $-0.29 \pm 0.02\text{‰}$ (2σ) and all of the chondritic meteorite classes (Fig. 2), except at the highest differentiation pressure using the Hin et al. (2014) coefficient. Diamonds are known to trap SiO₂, including those thought to come from the lower mantle (Stachel et al. 2000; Kaminsky 2012). Some SiO₂ inclusions are likely to be due to deep subduction of eclogite (Walter et al. 2011) and would have values close to bulk silicate Earth. The signature of a core source for SiO₂ would be an absence of aluminous phases and a light $\delta^{30}\text{Si}$ content of the SiO₂.

The values we report here represent lower bounds on the anticipated $\delta^{30}\text{Si}$ of core-hosted SiO₂ because we are also neglecting any fractionation of ³⁰Si during SiO₂ crystallization in the core itself, which will shift $\delta^{30}\text{Si}$ to less negative values. At the end of accretion, the core is likely to be hotter than the mantle and will cool rapidly (Lebrun et al. 2013). The SiO₂ crystallization required to run the Earth's dynamo corresponds to a cooling rate of 50–100 K/Gyr (Hirose et al. 2017), which is significantly lower than ~ 1000 K/Gyr rates expected in early Earth conditions. Hence the bulk of SiO₂ crystallized from the core will have separated under correspondingly higher temperatures than that of the present-day CMB. Independent of the $\Delta^{30}\text{Si}(T)$ metal-silicate fractionation factor used, the shift will be within the 1σ uncertainty depicted in Figure 2 if crystallization initially occurred at 7000–8000 K. Firmer predictions of

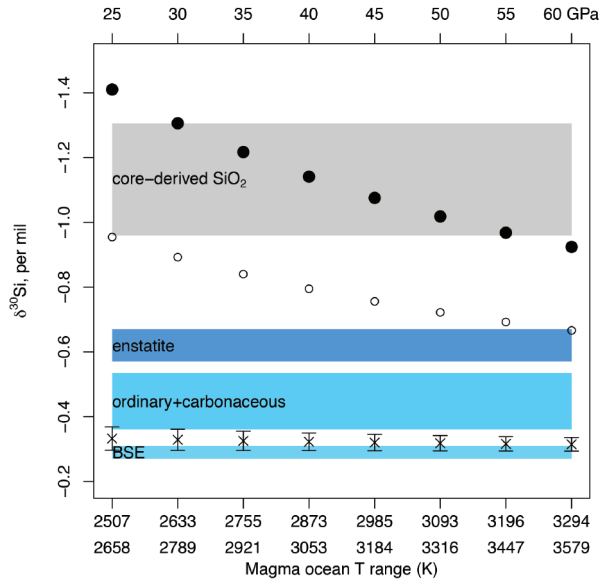


FIGURE 2. Bulk Earth (cross) and core-hosted SiO₂ (filled circle, open circle) ³⁰Si fractionation calculated using Si+O saturation at various temperatures corresponding to core formation compared to chondrites. Error bars on each $\delta^{30}\text{Si}_{BE}$ point correspond to variation due to metal-silicate separation temperature (at pressure given on top scale), O composition of core, and alternative $\Delta^{30}\text{Si}(T)$ coefficients. Colored bands show reported range of $\delta^{30}\text{Si}$ of various chondrite classes (Armytage et al. 2011; Fitoussi et al. 2009; Fitoussi and Bourdon 2012). Within the uncertainty of the formation conditions, $\delta^{30}\text{Si}_{BE}$ is similar to BSE. Core-hosted SiO₂ calculated using different fractionation factors (filled circle = Shahar et al. (2011); open circle = Hin et al. (2014); gray band is $\pm 1\sigma$ of filled circles points) is under most conditions lighter than chondritic meteorites and BSE, making it a useful diagnostic of core-mantle mass transfer.

uncertainty from this source require more detailed models of early Earth evolution focused on the end-stages of accretion and evolution past the magma ocean era.

IMPLICATIONS

The Si+O saturation model developed by Hirose et al. (2017) provides a way to estimate the core's bulk Si content and to estimate the core and bulk earth ³⁰Si fractionation. We find that the core's $\delta^{30}\text{Si}$ is between -0.92 and -1.36% , depending on the conditions of core formation. The bulk Earth $\delta^{30}\text{Si}$ is $-0.37 \leq \delta^{30}\text{Si}_{BE} \leq -0.30\%$, which overlaps bulk silicate Earth and is marginally heavier than the ordinary and carbonaceous chondrite groups. We also predict that any SiO₂ that originated in the core and was later trapped as an inclusion in diamond should have significantly lighter $\delta^{30}\text{Si}$ of around $-1.12 \pm 0.13\%$.

We also described a way to calculate the core's Si content using joint solubility constraints for Si and O in metal that may prove useful to draw up budgets for other stable isotope systems.

ACKNOWLEDGMENTS

Funding partly provided by MEXT/JSPS KAKENHI Grant numbers 15H05832 and 16H06285. Figures and calculations made using R (R Core Team 2017).

REFERENCES CITED

- Armytage, R.M.G., Georg, R.B., Savage, P.S., Williams, H.M., and Halliday, A.N. (2011) Silicon isotopes in meteorites and planetary core formation. *Geochimica et Cosmochimica Acta*, 75, 3662–3676.
- Badro, J., Siebert, J., and Nimmo, F. (2016) An early geodynamo driven by exsolution of mantle components from Earth's core. *Nature*, 536, 326–328.
- Dauphas, N., Potraissin, F., Burkhardt, C., Kobayashi, H., and Kurosawa, K. (2015) Planetary and meteoritic Mg/Si and $\delta^{30}\text{Si}$ variations inherited from solar nebula chemistry. *Earth and Planetary Science Letters*, 427, 236–248.
- Fiquet, G., Auzende, A.L., Siebert, J., Corgne, A., Bureau, H., Ozawa, H., and Garbarino, G. (2010) Melting of peridotite to 140 Gigapascals. *Science*, 329, 1516–1518.
- Fischer, R.A., Campbell, A.J., Reaman, D.M., Miller, N.A., Heinz, D.L., Dera, P., and Prakapenka, V.B. (2013) Phase relations in the Fe-FeSi system at high pressures and temperatures. *Earth and Planetary Science Letters*, 373, 54–64.
- Fischer, R.A., Nakajima, Y., Campbell, A.J., Frost, D.J., Harries, D., Langenhorst, F., Miyajima, N., Pollok, K., and Rubie, D.C. (2015) High pressure metal-silicate partitioning of Ni, Co, V, Cr, Si, and O. *Geochimica et Cosmochimica Acta*, 167, 177–194.
- Fitoussi, C., and Bourdon, B. (2012) Silicon isotope evidence against an enstatite chondrite Earth. *Science*, 335, 1477–1480.
- Fitoussi, C., Bourdon, B., Kleine, T., Oberli, F., and Reynolds, B.C. (2009) Si isotope systematics of meteorites and terrestrial peridotites: implications for Mg/Si fractionation in the solar nebula and for Si in the Earth's core. *Earth and Planetary Science Letters*, 287, 77–85.
- Georg, R.B., Halliday, A.N., Schauble, E.A., and Reynolds, B.C. (2007) Silicon in the Earth's core. *Nature*, 447, 1102–1106.
- Helffrich, G. (2017) A finite strain approach to thermal expansivity's pressure dependence. *American Mineralogist*, 102, 1690–1695.
- Helffrich, G., Ballmer, M.D., and Hirose, K. (2018) Core-exsolved SiO₂ dispersal in the Earth's mantle. *Journal of Geophysical Research*, 122, doi:10.1002/2017JB014865.
- Hin, R.C., Fitoussi, C., Schmidt, M.W., and Bourdon, B. (2014) Experimental determination of the Si isotope fractionation factor between liquid metal and liquid silicate. *Earth and Planetary Science Letters*, 387, 55–66.
- Hirose, K., Morard, G., Sinmyo, R., Umemoto, K., Hernlund, J., Helffrich, G., and Labrosse, S. (2017) Crystallization of silicon dioxide and compositional evolution of the Earth's core. *Nature*, 543, 99–102.
- Kaminsky, F. (2012) Mineralogy of the lower mantle: A review of 'super-deep' mineral inclusions in diamond. *Earth-Science Reviews*, 110, 127–147.
- Komabayashi, T. (2014) Thermodynamics of melting relations in the system Fe-FeO at high pressure: Implications for oxygen in the Earth's core. *Journal of Geophysical Research*, 119, 4164–4177.
- Lebrun, T., Massol, H., Chassfière, E., Davaille, A., Marq, E., Sarda, P., Leblanc, F., and Brandeis, G. (2013) Thermal evolution of an early magma ocean in interaction with the atmosphere. *Journal of Geophysical Research: Planets*, 118, 1155–1176.
- Li, J., and Agee, C.B. (1996) Geochemistry of mantle-core differentiation at high pressure. *Nature*, 381, 686–689.
- McDonough, W.F., and Sun, S.-s. (1995) The composition of the Earth. *Chemical Geology*, 120, 223–253.
- Morard, G., Andrault, G., Antonangeli, D., Nakajima, Y., Auzende, A.L., Boulard, E., Cervera, S., Clark, A., Lord, O.T., Siebert, J., and others. (2017) Fe-FeO and Fe-Fe₃C melting relations at Earth's core-mantle boundary conditions: Implications for a volatile-rich or oxygen-rich core. *Earth and Planetary Science Letters*, 473, 94–103.
- O'Neill, H.St.C., Canil, D., and Rubie, D.C. (1998) Oxide-metal equilibria to 2500°C and 25 GPa: Implications for core formation and the light component in the Earth's core. *Journal of Geophysical Research*, 103, 12,239–12,260.
- O'Rourke, J.G., and Stevenson, D.J. (2016) Powering Earth's dynamo with magnesium precipitation from the core. *Nature*, 529, 387–389.
- Ozawa, H., Hirose, K., Yonemitsu, K., and Ohishi, Y. (2016) High-pressure melting experiments on Fe-Si alloys and implications for silicon as a light element in the core. *Earth and Planetary Science Letters*, 456, 47–54.
- Palme, H., and O'Neill, H.St.C. (2003) Cosmochemical estimates of mantle composition. In H.D. Holland, and K.K. Turekian, Eds., *Treatise on Geochemistry*, 2. R Core Team (2017) R: A language and environment for statistical computing, R Foundation for Statistical Computing (<https://www.R-project.org/>), Vienna, Austria.
- Rubie, D.C., Frost, D.J., Mann, U., Asahara, Y., Nimmo, F., Tsuno, K., Kegler, P., Holzheid, A., and Palme, P. (2011) Heterogeneous accretion, composition and core-mantle differentiation of the Earth. *Earth and Planetary Science Letters*, 301, 31–42.
- Shahar, A., Hillgren, V.J., Young, E.D., Fei, Y., Macris, C.A., and Deng, L. (2011) High-temperature Si isotope fractionation between iron metal and silicate. *Geochimica et Cosmochimica Acta*, 75, 2688–2697.
- Shahar, A., Schauble, E.A., Caracas, R., Gleason, A.E., Reagan, M.M., Xiao, Y., Shu, J., and Mao, W. (2016) Pressure-dependent isotopic composition of iron alloys. *Science*, 352, 580–582.

- Siebert, J., Corgne, A., and Ryerson, F.J. (2011) Systematics of metal-silicate partitioning for many siderophile elements applied to Earth's core formation. *Geochimica et Cosmochimica Acta*, 75, 1451–1489.
- Siebert, J., Badro, J., Antonangeli, D., and Ryerson, F.J. (2013) Terrestrial accretion under oxidizing conditions. *Science*, 339, 1194–1197.
- Stachel, T., Harris, J.W., Brey, G.P., and Joswig, W. (2000) Kankan diamonds (Guinea) II: Lower mantle inclusion parageneses. *Contributions to Mineralogy and Petrology*, 140, 16–27.
- Tuff, J., Wood, B.J., and Wade, J. (2011) The effect of Si on metal-silicate partitioning of siderophile elements and implications for the conditions of core formation. *Geochimica et Cosmochimica Acta*, 75, 673–690.
- Wade, J., and Wood, B.J. (2005) Core formation and the oxidation state of the Earth. *Earth and Planetary Science Letters*, 236, 78–95.
- Walter, M.J., Kohn, S.C., Araujo, D., Bulanova, G.P., Smith, C.B., Gaillou, E., Wang, J., Steele, A., and Shirey, S.B. (2011) Deep mantle cycling of oceanic crust: Evidence from diamonds and their mineral inclusions. *Science*, 334, 54–57.
- Wood, B.J., Walter, M.J., and Wade, J. (2006) Accretion and segregation of its core. *Nature*, 441, 825–833.
- Xu, F., Yamazaki, D., Sakamoto, N., Sun, W., Fei, H., and Yurimoto, H. (2017) Silicon and oxygen self-diffusion in stishovite: Implications for stability of SiO₂-rich seismic reflectors in the mid-mantle. *Earth and Planetary Science Letters*, 459, 332–339.
- Zambardi, T., Poitrasson, F., Corgne, A., Méhut, M., Quitté, G., and Anand, M. (2013) Silicon isotope variations in the inner solar system: Implications for planetary formation, differentiation and composition. *Geochimica et Cosmochimica Acta*, 121, 67–83.
- Ziegler, K., Young, E.D., Schauble, E.A., and Wasson, J.T. (2010) Metal-silicate silicon isotope fractionation in enstatite meteorites and constraints on Earth's core formation. *Earth and Planetary Science Letters*, 295, 487–496.

MANUSCRIPT RECEIVED JANUARY 25, 2018

MANUSCRIPT ACCEPTED FEBRUARY 19, 2018

MANUSCRIPT HANDLED BY IAN SWAINSON