

Supplementary materials for **Anisotropic Thermoelastic Properties of Fe_7C_3 at High Pressures by Single-Crystal** **X-Ray Diffraction**

XIAOJING LAI^{1, 2, *}, FENG ZHU³, JIACHAO LIU⁴, DONGZHOU ZHANG², YI HU^{1, 2},
GREGORY J. FINKELSTEIN², PRZEMYSŁAW DERA², BIN CHEN^{2, *}

¹Department of Geology and Geophysics, University of Hawai'i at Mānoa, Honolulu, Hawaii, 96822, USA

²Hawaii Institute of Geophysics and Planetology, University of Hawai'i at Mānoa, Honolulu, Hawaii, 96822, USA

³Department of Earth and Environmental Science, University of Michigan, Ann Arbor, 48109, Michigan, USA

⁴Department of Geological Sciences, Jackson School of Geosciences, University of Texas at Austin, Austin, Texas, 78712, USA

*Corresponding Authors: Xiaojing Lai (laixiao@hawaii.edu), Bin Chen (binchen@hawaii.edu)

Contents of this file:

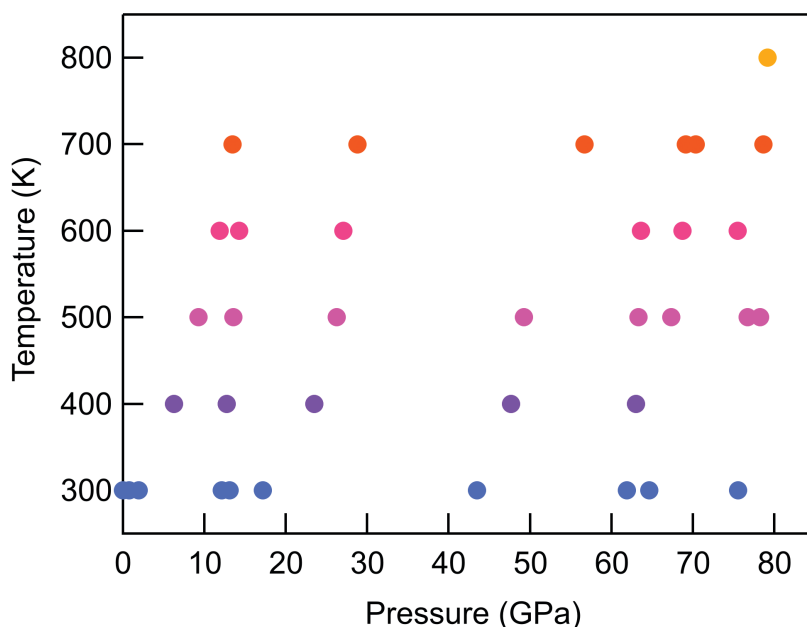


Figure S1. The P - T coverage of the XRD experiments of Fe_7C_3 in the diamond anvil cell.

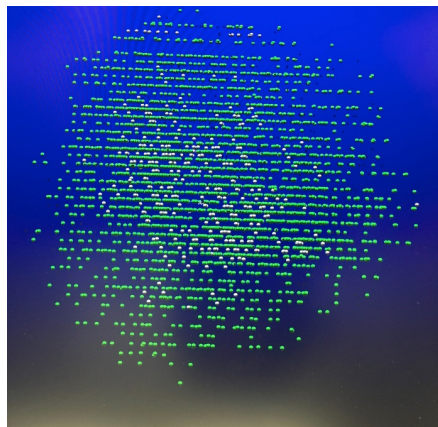


Figure S2. All the peaks harvested from single-crystal XRD measurements of Fe_7C_3 at UHM. The green peaks were used for indexing and refinement of the crystal structure at ambient conditions and may correspond to a dominant twin domain (as described in the main text). The white peaks are unique to the secondary twin domain. This corresponds to a 180° rotation around the $[-1\ 0\ 2]$ axis.

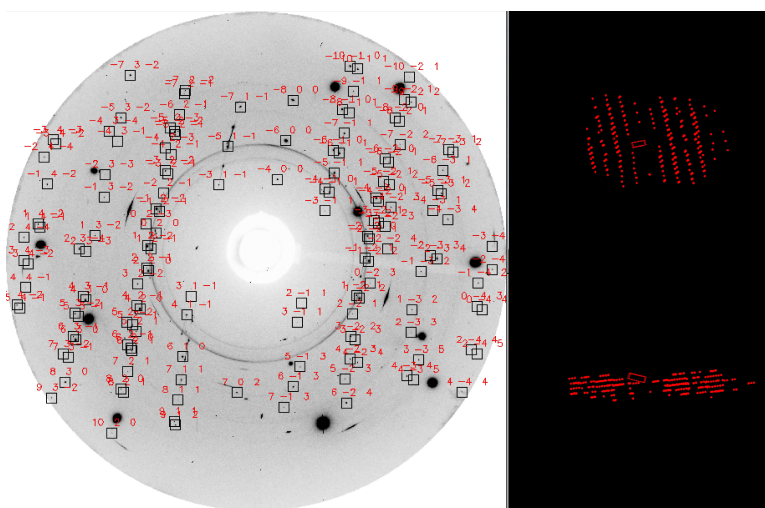


Figure S3. The representative single crystal XRD image at 28.8 GPa and 700 K(left) and projections of the Fe_7C_3 crystal structure in reciprocal space along different crystallographic directions (right). Red labels in the measured patterns correspond to Miller indices (hkl) of the reflections. The upper right projection is perpendicular to the X-ray beam.