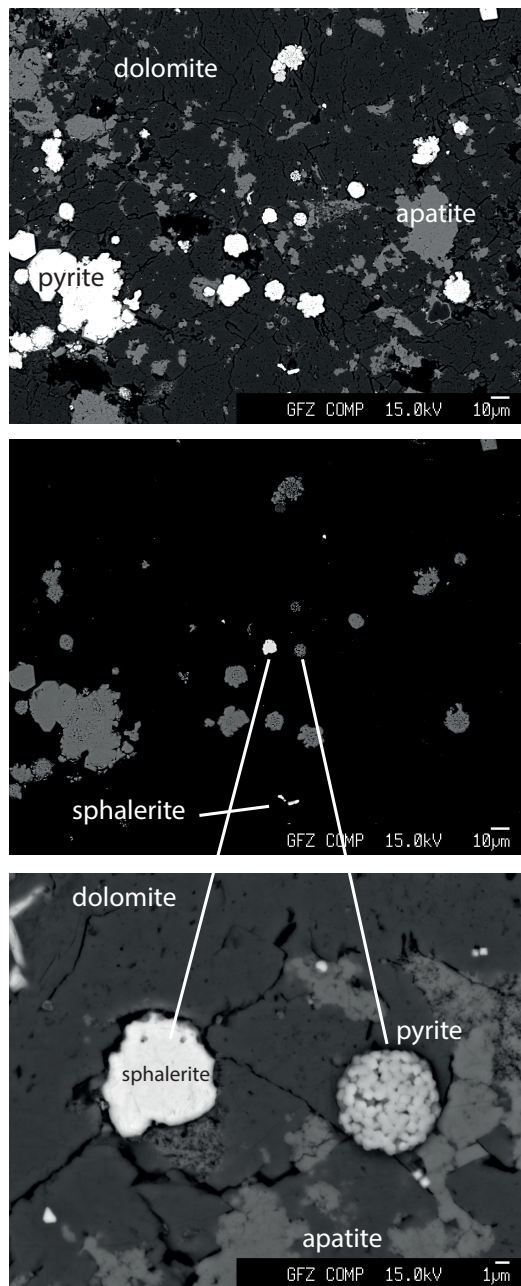


Franz et al.: fluorophlogopite in phosphorite
American Mineralogist, November-December 2014



FIGURES FOR APPENDIX

FIGURE 1. Appendix. BSE images of sample DUR-7, showing pyrite in large crystals (upper image, left; recrystallized pyrite II) together with pyrite framboids (middle and lower images). Middle image shows same area as upper image, but with different contrast, to highlight sphalerite, which rarely occurs; lower image is enlarged part of the central area.

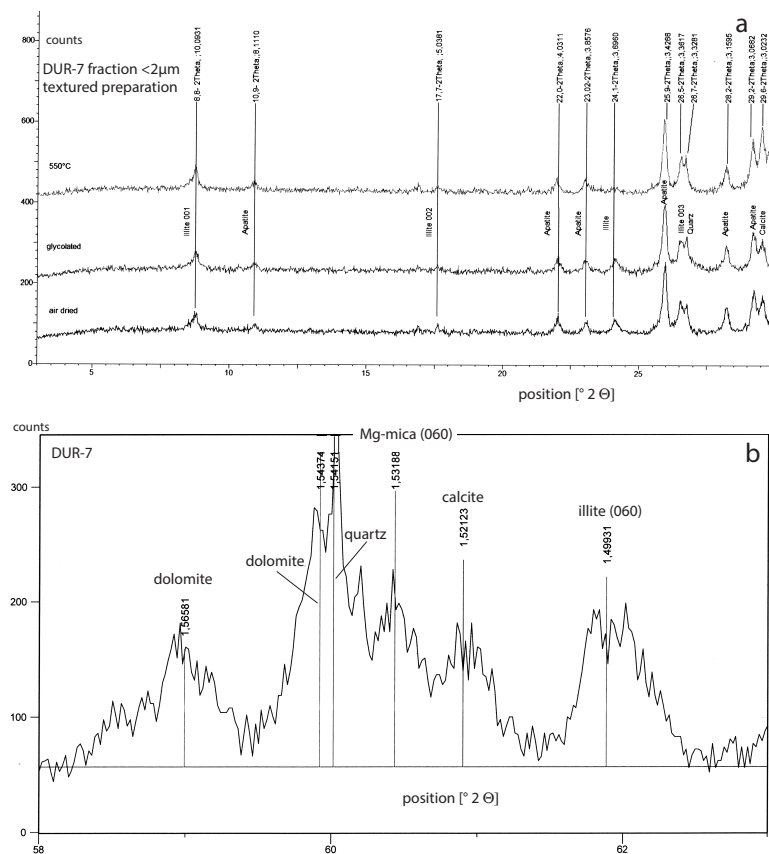


FIGURE 2. Appendix. X-ray powder diffraction pattern of fraction $<2\ \mu\text{m}$, separated from sample DUR-7; upper part shows textured preparation at air dried conditions, glycolated and heated to $550\ ^\circ\text{C}$. Lower part shows the area of the (060)-peaks for dioctahedral-trioctahedral layer silicates; Mg-mica = fluorophlogopite.